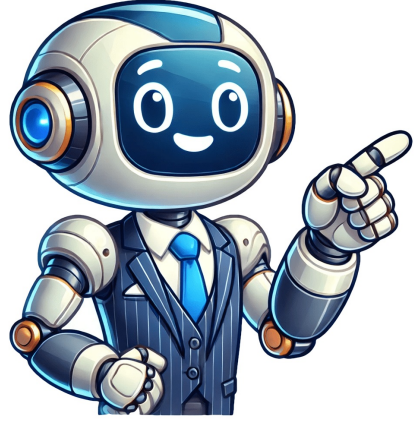


Continue































Page 2 In the United Kingdom, doors play a crucial role in ensuring building security and protecting property and occupants. When it comes to choosing the right door, two common terms that often arise are “steel doors” and “metal doors.” This article aims to shed light on the key differences between these two types of doors and provide clarity for those seeking to make an informed decision. Steel doors, widely used in the United Kingdom, are defined as doors primarily composed of steel, a strong and robust material. These doors possess several distinguishing characteristics and properties that make them a popular choice for various applications. One of the key advantages of steel doors is their exceptional strength and durability. Their solid construction and the inherent properties of steel allow them to withstand significant force and resist break-ins. Steel doors provide enhanced security for both residential properties and commercial or industrial buildings, offering peace of mind to occupants. In addition to their security features, steel doors exhibit excellent resistance to impact, fire, and extreme weather conditions. They are engineered to endure harsh elements, making them suitable for external use in areas prone to extreme temperatures or severe weather events. Moreover, steel doors have notable soundproofing capabilities, reducing noise transmission between rooms or from external sources. They also provide effective thermal insulation, helping to maintain comfortable indoor temperatures and enhance energy efficiency. Steel doors find extensive applications in various settings. In residential use, they are commonly installed as front doors, providing a sturdy and secure entry point. Commercial and industrial environments benefit from the installation of steel doors, which offer heightened security and withstand the demands of high traffic and heavy usage. Despite their numerous advantages, steel doors do have some drawbacks. The primary disadvantage is their relatively higher cost compared to other door materials. The manufacturing process and the use of steel contribute to the higher price tag associated with these doors. Additionally, steel doors are susceptible to rust if not properly maintained. Regular inspection, cleaning, and protective treatments are necessary to prevent rust formation and ensure the longevity of steel doors. Overall, steel doors are a reliable and secure choice, providing strength, durability, and soundproofing capabilities. While their cost and susceptibility to rust should be considered, the advantages of security, longevity, and customisation options make them a popular option for those prioritising robust door solutions. Metal doors, a broad category encompassing various types of doors, offer a range of options in the United Kingdom. Understanding the composition, characteristics, and applications of metal doors is essential for making informed choices when selecting suitable door solutions. Metal doors can be made from different metals, with three common types being aluminium, galvanised steel, and stainless steel. Aluminium doors are lightweight yet durable, making them suitable for both interior and exterior use. Galvanised steel doors are known for their exceptional strength and resistance to corrosion, making them a popular choice for commercial and industrial applications. Stainless steel doors provide a sleek and modern aesthetic while offering excellent durability and resistance to rust and corrosion. Metal doors share several characteristics and properties that make them a viable option for various settings. They exhibit strength and durability, providing reliable security for both commercial and residential buildings. Metal doors are also known for their resistance to corrosion, ensuring longevity even in harsh environments. This quality makes them particularly suitable for coastal areas or locations with high levels of moisture. Furthermore, metal doors offer versatility in design and customisation options, allowing for tailored solutions that match specific aesthetic preferences and functional requirements. The applications of metal doors are widespread, encompassing both interior and exterior use. Metal doors can be utilised in commercial spaces such as offices, schools, hospitals, and retail establishments, where they provide security and durability. In residential settings, metal doors can be installed as entrance doors or used for interior rooms, offering a stylish and contemporary appearance. The versatility of metal doors also extends to their compatibility with a range of security doors architectural styles, making them a popular choice for both modern and traditional buildings. When considering metal doors, it is important to weigh the advantages and disadvantages. One significant advantage of metal doors is their affordability compared to some other door materials. They offer a cost-effective option for those seeking durable and secure door solutions. Additionally, metal doors provide aesthetic appeal, often featuring sleek designs and a variety of finishes to complement different interior or exterior styles. Another advantage is their lightweight nature, which makes them easier to install. However, metal doors may have certain disadvantages to consider. One concern is security, as some metal doors may be less resistant to forced entry compared to steel doors. It is essential to choose a metal door with appropriate security features based on the specific requirements of the application. Additionally, while metal doors offer durability, they may not match the same level of strength and longevity as steel doors, especially in high-traffic or harsh environments. In conclusion, metal doors offer an array of options for those seeking versatile and cost-effective door solutions. Their composition, characteristics, and applications vary depending on the type of metal used. While metal doors provide aesthetic appeal, affordability, and lightweight benefits, it is important to carefully consider security concerns and durability compared to steel doors when making a selection. While both steel doors and metal doors fall under the category of sturdy and reliable door options, there are key differences that set them apart. Understanding these differences can help individuals make an informed decision when selecting the most suitable door for their specific needs. Steel Doors: Steel doors are primarily composed of steel, a strong and robust material known for its durability and resistance. They are typically constructed using a solid steel core or a steel frame with steel panels. Metal Doors: Metal doors, on the other hand, encompass a broader range of materials, including aluminium, galvanised steel, and stainless steel. These doors can have different compositions depending on the type of metal used. Steel Doors: Steel doors are renowned for their exceptional strength and security features. Their solid construction and the inherent properties of steel make them highly resistant to forced entry, providing enhanced security. Metal Doors: While metal doors offer durability, their strength and security may vary depending on the specific metal used. Some types of metal doors, such as aluminium doors, may be less resistant to forced entry compared to steel doors. Steel Doors: Steel doors are highly durable and can withstand harsh environmental conditions, including extreme temperatures and weather events. However, they are susceptible to rust and require regular maintenance, such as painting and protective treatments, to prevent corrosion. Metal Doors: Metal doors, depending on the type of metal, can offer good durability and resistance to corrosion. Stainless steel doors, for example, exhibit excellent resistance to rust. However, certain metals, like aluminium, may require more frequent maintenance and protective coatings to prevent corrosion. Steel Doors: Steel doors have inherent thermal and sound insulation capabilities due to the density and thickness of steel. They help in maintaining stable indoor temperatures and reducing noise transmission. Metal Doors: The thermal and sound insulation properties of metal doors can vary depending on the specific metal used. Some metals, such as galvanised steel, offer better thermal insulation than others like aluminium. Steel Doors: Steel doors provide a wide range of customisation options in terms of design, finishes, and panel styles. They can be tailored to suit various architectural styles and personal preferences. Metal Doors: Metal doors also offer customisation options, but the extent may vary depending on the type of metal used. Aluminium doors, for instance, can be powder-coated in different colours, while stainless steel doors provide a sleek and modern aesthetic. Considering these key differences, individuals should assess their specific requirements, such as security needs, maintenance preferences, and design aesthetics, to determine whether a steel door or a metal door is the most appropriate choice for their particular application. When it comes to choosing between steel doors and metal doors, several factors should be considered to ensure the selection of the most appropriate door for a specific application. By evaluating these factors, individuals can make an informed decision that aligns with their requirements and priorities. Security requirements: The level of security needed is a crucial consideration. If high-level security is a top priority, steel doors are often the preferred choice due to their robustness and resistance to forced entry. Environmental factors: The environmental conditions to which the door will be exposed should be taken into account. Steel doors excel in extreme weather conditions, offering better resistance to fire, impact, and severe climates. On the other hand, certain metal doors, such as aluminium doors, are more suitable for interior or moderate environmental conditions. Budget constraints: Budget is an important factor for many individuals. Steel doors tend to be more expensive than some metal doors due to the higher cost of steel. Therefore, budget considerations may influence the choice between steel doors and metal doors. Steel doors are highly recommended for applications where robust security and durability are paramount. Some common applications include: High-security areas: Steel doors are ideal for securing areas with sensitive information, valuable assets, or high-risk zones. Commercial and industrial settings: Steel doors are often used in warehouses, factories, offices, and other commercial or industrial facilities where security and durability are critical. Residential properties: Steel doors can provide homeowners with enhanced security and peace of mind, particularly when used as front doors or for secure access points. Metal doors, with their range of materials and characteristics, are recommended for various applications, including: Interior use: Metal doors can add a modern and stylish touch to interior spaces such as offices, shops, and residential properties. Exterior use (moderate security requirements): Metal doors, such as aluminium doors, are suitable for areas where high-security needs are not a primary concern but aesthetic appeal and moderate security are desired. Budget-conscious projects: Metal doors, especially those made from cost-effective materials like aluminium, are often chosen for projects with budget constraints, without compromising on durability and aesthetics. By carefully considering security requirements, environmental factors, and budget constraints, individuals can make an informed decision regarding the most suitable door option. Whether opting for the robust security of steel doors or the versatility of metal doors, choosing the right door ensures that security, functionality, and aesthetic preferences are all taken into account. Seeking professional advice and consultation can also assist in making the best choice for specific applications. In conclusion, understanding the differences between steel doors and metal doors is essential for selecting the most suitable option for specific applications. While both types of doors offer their own advantages and considerations, certain factors can guide individuals towards the right choice. Steel security doors, with their robust construction and exceptional security features, are ideal for applications that require high-level security and durability. They excel in commercial, industrial, and residential settings where protection against forced entry and extreme weather conditions is crucial. On the other hand, metal doors provide a wider range of options, including aluminium, galvanised steel, and stainless steel. These doors offer versatility in design, aesthetic appeal, and cost-effectiveness. They are often recommended for interior use, projects with moderate security requirements, and budget-conscious applications. When choosing the appropriate door, factors such as security requirements, environmental conditions, and budget constraints should be carefully considered. Assessing these factors will help individuals make an informed decision that meets their specific needs and priorities. In selecting the right door, it is crucial to strike a balance between security, functionality, durability, and aesthetics. Consulting with professionals in the industry can provide valuable guidance and expertise, ensuring that the chosen door solution aligns with the requirements of the application. Ultimately, whether the choice is a steel door or a metal door, it is important to prioritise the specific needs and preferences of the project. By taking into account the key differences, considering the relevant factors, and seeking expert advice, individuals can confidently select the door that best meets their requirements, offering the desired level of security, durability, and aesthetic appeal. ARA Manufacturer’s Duraguard door leaf is a medium duty metal clad door with a foam core and a strong locking system. When you think about the elements that define a building’s character, doors might not always come to the forefront of your mind. Yet, these pivotal pieces are more than just entry and exit points. They encapsulate the transition between spaces, embodying both function and form. Door skins help with this, as they subtly elevate a door so it becomes an integral part of a building’s aesthetic and structural integrity. At Stabilit America, we understand this balance, crafting door skins that stand up to the demands of both nature and use. It’s about ensuring every door does its job beautifully, blending seamlessly into the fabric of your spaces. What Makes a Door More Than Just a Door? You may wonder: What is a door skin? Simply put, a door skin is the outermost layer that covers a door’s core, providing both protection and style. It’s what you see first and what shields the door from the harsh realities of daily use. Our door skins are not just any material. They are embossed, reinforced composite panels designed to withstand the elements and the test of time and made with high-quality polyester resins and UV inhibitors. The Role of Door Skins in Construction When it comes to construction and remodeling, every detail counts—right down to the choice of door skins. Whether it’s a bustling hospital corridor, a classroom full of eager learners, or a robust agricultural facility, all door skins are tailored to meet diverse requirements, reinforcing doors where it matters most. Durability: Door skins protect against wear and tear, ensuring doors withstand the daily hustle and bustle. Resistance: They offer a shield against environmental challenges like rust, corrosion, and moisture. Aesthetics: Beyond functionality, door skins provide a canvas for design, allowing doors to complement or elevate a space’s overall look. Customization: With a variety of materials and finishes available, door skins can be customized to meet specific needs, such as enhanced hygiene in healthcare settings or increased insulation in cold storage units. Ease of Maintenance: Designed for easy cleaning and upkeep, door skins help maintain hygiene standards and aesthetic appeal without requiring excessive effort. As you navigate your next project, remember that the right door skin can significantly impact a building’s functionality and aesthetic. It’s about making informed choices that contribute to the longevity and performance of your doors, ensuring they remain an asset rather than a maintenance burden. Choosing the Right Door Skin for Your Project Selecting the right door skin for your project is a nuanced decision influenced by a variety of factors that go beyond mere appearance. This choice can dictate not only the longevity and resilience of your doors but also how they integrate with the building’s overall aesthetic and functional requirements. It’s a decision that merits careful consideration tailored to the specific demands of your project. Material Compatibility: Ensure the door skin material complements the core door material for optimal performance and durability. Environmental Conditions: Choose materials that can withstand the specific conditions they’ll face, whether it’s high humidity, extreme temperatures, or direct sunlight. Design and Aesthetics: Look for door skins that align with your project’s aesthetic vision, offering the right color, texture, and finish. Maintenance Requirements: Consider how easy the door skin is to clean and maintain, especially in high-traffic areas. Safety and Compliance: Make sure your choice meets all relevant safety standards and building codes, especially for fire resistance. Budget Constraints: Balance quality with cost, aiming for the best value that meets both your aesthetic and functional needs without compromising on quality. Making the right selection involves weighing these factors carefully, ensuring that your doors not only look the part but also stand up to the rigors of their intended use. The right door skin enhances both the form and function of a door, contributing to a project’s success on multiple levels. Remember, a well-chosen door skin is an investment in the longevity and aesthetic appeal of your space, making it a detail worth getting right. Advantages of Integrating Door Skins into Your Buildings Integrating door skins into your buildings offers a multitude of benefits that can significantly enhance both the functionality and aesthetic appeal of your doors. From bolstering durability to expanding design possibilities, the advantages are compelling and worth exploring for any construction or remodeling project. Enhanced Durability: Door skins add a protective layer that guards against daily wear and tear, ensuring doors remain in top condition for longer. Aesthetic Versatility: With a wide range of designs and finishes available, door skins make it possible to match any architectural style, whether you’re aiming for a modern look or a traditional feel. Ease of Installation: Designed for quick and straightforward application, door skins can save valuable time on the construction site, streamlining the installation process. Cost-Effectiveness: By extending the life of doors and reducing the need for frequent replacements or repairs, door skins offer a cost-efficient solution in the long run. Improved Resistance: They provide an additional layer of defense against environmental factors such as moisture, temperature changes, and even UV exposure, depending on the material chosen. Low Maintenance: Once installed, door skins require minimal upkeep, making them a practical choice for busy environments. Choosing door skins for your project is a smart move that can elevate the quality and appearance of your doors. It’s a decision that not only reflects a commitment to durability and design but also enhances the overall value of your building. With these benefits in mind, it becomes clear why door skins are an increasingly popular choice among architects and builders aiming for excellence in their projects. Elevate Your Project With the Right Door Skins Grasping the full scope of what is a door skin can profoundly impact the effectiveness and aesthetic appeal of your construction or remodeling projects. By integrating the right door skins, you ensure your doors not only meet the functional demands but also enhance the visual harmony of your spaces. Contact us to explore our door skins, tailor-made to suit diverse architectural needs and stylistic preferences. Take the next step toward elevating your projects with door skins that promise quality, durability, and styleStabilit America Inc. is a leading North American manufacturer of fiberglass reinforced panels (FRP) and polycarbonate sheets, with over 65 years of experience. The company offers the widest range of acrylic, polyester, and polycarbonate laminates, backed by international certifications (USDA, Greenguard, FM, ISO 9001, among others), serving industries such as industrial construction, transportation, and sustainable building. Made of galvanized steel sheet, decorative door skins will not rust, warp or rot. They are tougher than wooden doors and can withstand the impact of external forces without being easily damaged. Therefore, the decorative door skin has a long service life and you don’t need to replace the old door in years to come. Skin materialGalvanized steelSurface treatmentGalvanized, Powder coating, Laminated PVCThickness0.4/0.45/0.5/0.6/0.8/1.0/1.2mm, per requestModelFlush,1/2/3/4/5/6/8/9/12 panelSize32” X 80” , 36” X 80” X 1 3/4, per requestPacking wayBy pallet/woodencase 1. Aesthetic Appeal: Decorative door skins are designed to provide a visually appealing and decorative touch to doors. They come in a wide range of designs, patterns, textures, and colors, allowing you to choose a style that complements your interior decor. Whether you prefer a classic, contemporary, or unique design, decorative door skins can significantly enhance the overall aesthetic appeal of your doors. 2. Customization Options: Door skins offer a wide range of customization options. You can choose from a variety of designs, colors, and finishes to match your personal style and interior decor. Some door skin manufacturers even provide the option of custom designs, allowing you to create a unique and personalized look for your doors. 3. Easy Removal and Replacement: If you decide to change the design or update the look of your doors, decorative door skins can be easily removed and replaced. This flexibility allows you to adapt your door aesthetics to evolving design trends or personal preferences. 1. Interior Doors: Decorative door skins are commonly used to upgrade the appearance of interior doors in homes, apartments, and hotels. They can transform plain, flat doors into visually appealing focal points, enhancing the overall aesthetics of rooms and hallways. 2. Exterior Doors: Exterior doors, such as front doors or patio doors, can benefit from decorative door skins to create a welcoming and stylish entrance. They can add curb appeal and make a strong visual statement, improving the overall appearance of the building’s exterior. 3. Closet Doors: Decorative door skins can be applied to closet doors, bringing a touch of style and personality to otherwise plain and functional elements. They can help integrate the doors seamlessly into the overall room design or create a statement piece within a bedroom or dressing area. 4. Cabinet Doors: Kitchen cabinets, bathroom cabinets, or other storage units with doors can be enhanced with decorative door skins. This application allows for a cohesive design scheme, tying the cabinets’ aesthetics with the rest of the space. Q: What’s your trade terms? A: Our trade terms: EXW, FOB, CFR and CIF per request. Q: Can you make the customer design? A: Sure. We accept OEM/ODM order, just feel free to contact us to send your designs and details to get the quotation. Q: How to pack the doors and the frames? A: The doors and the frames are packed separately. We are committed to being a leader in the Door Skin industry. Our company adheres to the concept of making friends with customers sincerely and developing close customer relationships, and puts ourselves in the shoes of customers, and continues to create value for customers. We use advanced manufacturing techniques and technology to produce high-quality products. We always provide high quality Decorative Door Skins and services with the concept of integrity and sincere cooperation with every customer. Our products are available at prices that are affordable and competitive. Since our company was established, we have taken safety first, quality first and the pursuit of excellence as our basic principles. We are committed to providing our customers with exceptional customer service. Our products are various and cost-effective. Choose us and you will get high quality and high return. We are committed to providing our customers with the best value for their money. Our products are stable in quality and novel in style, and enjoy high evaluation in the industry.