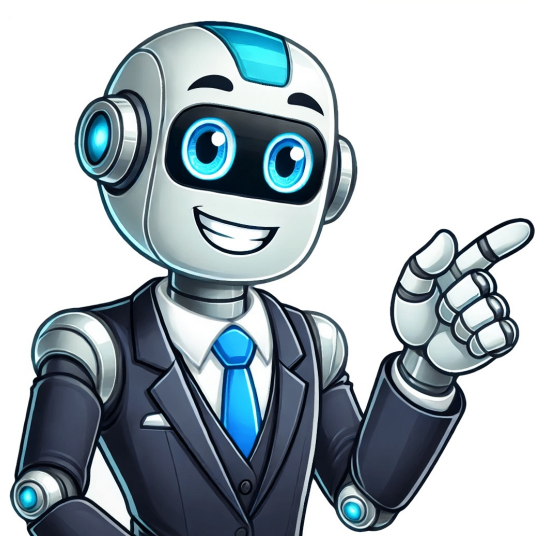


[Click Here](#)



















## Is microsoft endpoint configuration manager free

As the WannaCry outbreak showed enterprises in 2017, unpatched devices can have a devastating impact on a company’s operations. You are welcome to leave your questions in the comments section. SCCM has a long way to go before it’s obsolete. SCCM allows IT teams to automate various tasks, including software deployment, system updates, security patching, inventory management, and remote troubleshooting. Combining the two gives users a lot more co-management options to work with. You can configure your own alert conditions to determine when notifications will be generated and set the severity of the alerts. There are three different locations from which you can download SCCM baseline media, and they are listed as follows: Microsoft Evaluation Center Microsoft Volume Licensing Service Center Microsoft Visual Studio Subscriptions (formerly known as MSDN) The SCCM installation media is the same regardless of where you download the baseline version of Configuration Manager. You can download the latest SCCM baseline media from Microsoft VLSC (Volume Licensing Service Center). SCCM is a staple for many enterprises because it offers an efficient means of updating multiple devices. As SCCM evolves into part of MEM, organizations are encouraged to embrace this new integrated approach to endpoint management, ensuring they stay ahead of emerging security and management challenges in the modern hybrid workplace. Since there are several products listed, use the search box to find your product. The last method to download the baseline media for Configuration Manager is from the Microsoft Evaluation Center. One of the most significant is the limited support for third-party patching. In this post, I will cover different ways to download SCCM baseline media. SCCM is now part of this package and it is called Microsoft Endpoint Configuration Manager (MECM). The main difference between the two is that SCCM is used for configuration management and SCOM is used to monitor applications and services. You can download the latest baseline version media from Visual Studio Subscriptions (formerly known as MSDN Subscriptions). If you want to install Configuration Manager from scratch, then baseline install media is what you need. When a new SCCM baseline version is released, the latest baseline media may not be available in the Visual Studio Subscriptions portal right away. Use the following steps to download the latest baseline media for SCCM from Microsoft Evaluation Center: Launch the browser and access evaluation Microsoft Endpoint Configuration Manager. For more information, see Service Windows. Scheduling Schedule updates to make sure that your network infrastructure is periodically updated (useful for minimizing vulnerabilities). Reports are customizable so you can pick which information to monitor. Fill in some basic details and click on the “Download now” button. Issues like this can be fixed by using external tools, such as ManageEngine Connect Plus or SolarWinds Patch Manager, which extend SCCM’s patching for third-party applications. And you should be aware of this limitation before downloading. Next, click Downloads and Keys tab. The rebrand took place in an attempt to provide users with a complete endpoint management solution for cloud environments with intelligence features. When installing a new ConfigMgr server in production, you must use the most recent baseline version installation media. Save the ConfigMgr installation media to your computer. The reporting features offered by SCCM are extremely valuable from a regulatory compliance perspective and display that systems have been updated. You can edit reports with the Report Builder. Microsoft Configuration Manager helps IT manage PCs and servers, keeping software up-to-date, setting configuration and security policies, and monitoring system status while giving employees ... Microsoft Endpoint Configuration Manager helps IT manage PCs and servers, keeping software up-to-date, setting configuration and security policies, and monitoring system status while giving ... The Microsoft Endpoint Manager Evaluation Lab Kit provides a self-deploying Configuration Manager lab environment and guidance on using this unified platform to deploy and manage ... Features include: Bring Your Own Device (BYOD) A central admin portal Application Level Management Integration with SCCM Microsoft Malware Protection Engine Reporting The key difference between SCCM and Intune is that the former was aimed at managing on-premises infrastructure, while the latter was aimed at cloud-based services. Manually update secondary sites to a new update version from within the console. Before installing the Configuration Manager using baseline media, make sure you go through the SCCM licensing. That is why it is referred to as the Evaluation version. Instead, only use in-console updates to stay up-to-date. Furthermore, see the SCCM release cadence to learn about the changes that Microsoft has announced for ConfigMgr releases. Some of the features SCCM could be used for include: OS deployment Create images of operating systems and deploy them. The SCCM baseline versions are used for new Configuration Manager server installations. Is SCCM Dead? Updates you install at the central administration site (CAS) automatically install at child primary sites. The Report Builder gives you the option to add visual elements like charts, maps, sparklines, and data bars for greater clarity. Integration with Microsoft Intune Manage mobile devices for iOS, Android, and Windows with Microsoft Intune. Microsoft still supports the software and while the rebranding to MECM may have changed the nature of endpoint management with a new cloud-based console, the SCCM capabilities enterprises are familiar with are still there. This means you can install the SCCM using the baseline media and test all of its features for up to 180 days. For now, SCCM or MECM still has a significant role to play in managing configurations and OS deployments. An administrator can manage dozens of devices through a single platform, push updates to devices, and update configurations remotely. Use these updates to update your infrastructure to the latest version of Configuration Manager. System Center Configuration Manager (SCCM) is a comprehensive management tool developed by Microsoft to help IT administrators manage large numbers of computers, servers, and mobile devices within an organization. Reporting Create reports on systems for further information on patch status. After you install a baseline version, the additional versions of Configuration Manager are available as in-console updates. Install and Update Third Party Applications with Patch My PC A SCCM baseline media includes all the setup files required to install SCCM or Configuration Manager. You will require an account to access the Volume Licensing Service Center. In order to run reports, you need to have the appropriate permissions. For example, you can create an Antimalware Activity Report that tells you about the security status of your infrastructure (see the next section for more information on reports). You must extract the components to a folder, and you can then launch Configuration Manager setup. Microsoft Intune vs SCCM One solution that’s often compared with SCCM is Microsoft Intune. Upgrade from a support version of System Center 2012 Configuration Manager. The addition of intelligent features and analytics will only serve to enhance the device management process. SCCM is part of the System Center family of products, which includes tools such as: System Center Operations Manager System Center Data Protection Manager System Center Virtual Machine Manager System Center Service Manager System Center Capacity Planner System Center Mobile Device Manager System Center Essentials SCCM is sometimes mistaken for Microsoft System Center Operations Manager (SCOM), a platform used for monitoring the health and performance of systems. Microsoft Systems Center Configuration Manager (SCCM) provides the following services: Centralized endpoint management Remote control Operating system deployment Hardware inventory Software inventory Software distribution Patch management Network access protection Configuration Manager is included in the following plans: Important. Having a configuration management tool saves time that would be lost manually updating devices. For example, you could distribute updates to Windows 10 devices throughout your entire network. Once you’ve completed a report you can export it in a PDF, CSV, or Microsoft Excel format. Control this timing by using a service window at the primary site. After the evaluation period is over, you must activate the product. What is SCCM? This transition began in earnest in 2019, when Microsoft started offering Endpoint Manager as the go-to tool for device and application management. The package also has some security management tools included. As more updates roll out in the foreseeable future we can expect to see configuration management capabilities grow with the needs of enterprises. Finally, the pricing of SCCM can be costly for enterprise users. You can use this ISO media to install SCCM 2403 in your new setup. By using the latest baseline version to install a new hierarchy, you avoid installing an outdated or unsupported version of Configuration Manager. There’s manual work to do as you can manage everything from one location. Under Get Started for Free, click Download the EXE. After you install a baseline version, later versions of Configuration Manager are available as in-console updates. With SCCM you can manage Windows devices and remotely update software. You can use the scm installation media for new Configuration Manager server installations. This is a substantial weakness given that third-party software still needs to be secured, and can be used as an entry point to a network by cyber attackers. By logging in to this portal, you can download products and keys, manage your Volume Licenses, grant permissions, view account details etc. Maintenance Windows A user can define a time when configuration management can be completed on a collection of devices (i.e. carry out updates when they won’t affect productivity). Essentially you can create anti-malware policies and then deploy them to devices throughout your network. Having a clear inventory enhances visibility and enables the user to keep systems compliant more easily. It is designed to support operating systems and software packages produced by Microsoft. I hope this article helped you understand the basics of SCCM baseline media and its uses. In case you don’t, please contact your licensing administrator. The Limitations of SCCM While SCCM is a very useful tool it does have some substantial limitations: Support is limited for non-Windows devices Limited support for third-party application patches Pricing is complex and expensive Given that SCCM was designed for Windows devices there is limited support for Mac and Linux tools. The default reports cover everything from asset management to vulnerability assessments and user data. Using SCCM is a good idea if you’re in need of a solution for configuring and managing systems in an enterprise network environment. In such cases, you must wait for the site to become operational. The SCCM baseline media is now downloaded to your computer. To download the baseline media, click the Download button next to the SCCM version. It is important to note that the Report Builder must be installed from SSRS or Microsoft websites. SCCM FAQs SCCM is the System Center Configuration Manager from Microsoft. From a security standpoint, being able to identify and fix non-compliant systems reduces cybersecurity risks and helps to ensure compliance with industry regulations. Endpoint protection Manage anti malware policies and firewall security from one location to protect computers. The Volume Licensing Service Center (VLSC) gives you easy access to Volume Licensing benefits. SCCM enables you to configure anti-malware policies and firewall settings, set automatic deployment rules for software updates, configure Endpoint Protection client configurations, send notifications, and more. When you can consider the cost alongside the limitations in third-party patching and limited support for non-Windows devices, it’s a lot of money for incomplete coverage. If you have already found the product that you were looking for, click on download icon. An administrator has access to an inventory of IT assets without having to create one manually. MEM integrates SCCM with Intune, a cloud-based mobile device management (MDM) service, providing a more unified and flexible platform for managing both on-premises and cloud-based resources. Configuration Manager isn’t included in the Microsoft 365 Business Premium plan. The user can combine both to manage on-premise and cloud-based infrastructure from computers to mobile devices, and applications. Download SCCM Baseline Media from VLSC According to my understanding, you can download the most recent ConfigMgr installation media as well as up to two previous releases. Click Download and from the list of products, select the latest ConfigMgr baseline media version. Recently, Brad Anderson, Corporate Vice President for Microsoft 365 announced the decision to rebrand SCCM and combine it with Microsoft Intune, a mobile management solution to form Microsoft Endpoint Manager. From Microsoft VLSC, you can download SCCM Baseline Media using the following steps: First, login to the Volume Licensing Service Center. Microsoft will upload the media soon after they release the update for everyone. SCCM has now been renamed to Microsoft Endpoint Configuration Manager and is one of several services that make up Microsoft Endpoint Manager including Device Management Admin Center (DMAC) and Desktop Analytics. Before SCCM was rebranded as Microsoft Endpoint Configuration Manager, it was an application designed for managing Windows and Mac OS computers, Linux/Unix servers, and mobile devices using Windows/OS/Android. From a security standpoint, deploying patches is essential for keeping your software updated and reducing the likelihood of a cyber attacker exploiting a vulnerability. With its extensive reporting and configuration capabilities, SCCM has been vital in maintaining the security and functionality of corporate networks, especially in large organizations with complex IT infrastructures. The inability to patch third-party applications leaves open vulnerabilities that can be exploited by attackers. Endpoint Protection Endpoint protection is another main function of SCCM. The Benefits of Using SCCM Using SCCM brings to the table a number of benefits for enterprises managing a network full of devices: Unified management of Windows endpoints Integration with Windows systems Simple to administrate (compare to other tools like Chef and Puppet) Perhaps the biggest advantage is that SCCM unifies the management of Windows endpoints. SCCM comes with out-of-the-box reports for monitoring devices throughout the network. If you are an organization, you must have SCCM licenses before you deploy it in production. The program uses Microsoft WSUS to check for updates and deploy patches to devices. By offering centralized control over these critical functions, SCCM helps ensure that systems are properly configured, compliant with security standards, and running efficiently. There are also malware alerts. The evaluation center hosts many Microsoft products, and downloads are available to everyone without the need for a subscription. Clean installation of a new Configuration Manager (current branch) site in a new hierarchy. In other words, the update was designed to give enterprises the features they need to thrive in the modern workplace with all the range of devices making their way into the workplace. And What is Microsoft Endpoint Manager? SCCM is recommended to users whose infrastructure is dominated by Windows devices unless you want to do additional manual patching. After you download the ConfigMgr baseline media, you get an .exe (executable file). It supports a variety of use cases, from ensuring operating systems are up to date with the latest patches to managing the installation of software across a wide network of computers. From then onward you can monitor endpoints with activity reports. Through one console you can maintain multiple Windows devices, and schedule/deploy patches to devices periodically. You install in-console updates to update the version of your top-level site. The baseline versions are downloadable media (from the Microsoft Volume License Service center, VLSC, Evaluation Center) that can be used for a variety of installation methods: Windows Management / Patch Management Windows management or patch management is one of the main use cases offered by SCCM. For example, you can create a report on systems that have missed patches. The intention behind the program was to equip customers to manage cloud-based infrastructure. As we noted further above, there’s also limited support for third-party application patching. Click the Downloads tab and in the search box type the product name, for example, Configuration Manager and click Search. However, it is important to note that the patch management capabilities offered by SCCM do have limitations. The Microsoft Evaluation Center is occasionally unavailable due to maintenance or a site upgrade. Patches run in the background to minimize disruption. Once that’s done, you don’t need the baseline version. Reporting Another key function of SCCM is report creation. What changes with licensing for co ... Intune integrates with other Microsoft products and services that focus on endpoint management, including Configuration Manager for on-premises endpoint management. Why is SCCM now Microsoft Endpoint Configuration Manager? The system is concerned with the security and availability of software within a business. Individual client licenses range from \$41 (E33) for the Client ML to \$430 (E353) for the Enterprise ML version. Overseeing the updates and configurations of devices from a top-down viewpoint saves you from having to manage devices individually on every single device. To stay current, Microsoft recommends not using baseline versions after upgrading to the Configuration Manager current branch. SCCM has long been a staple in enterprise IT environments, offering powerful tools for managing both physical and virtual devices. I’d like to emphasise that any product downloaded from the Microsoft Eval Center is fully functional for a set number of days. Remote Control An administrator can take control of a remote device to troubleshoot if a device experiences performance issues. Overall administration is also much easier. SCCM is largely ineffective at patching third-party applications. Two of the major functions of SCCM are software distribution and installation and patch management. Download SCCM Baseline Media from Microsoft Evaluation Center Note that when you download the baseline installation media of SCCM from Microsoft Evaluation Center, it is fully functional for 180 days. That’s true because you use the baseline version to install the Configuration Manager in a new hierarchy. Microsoft periodically releases SCCM baseline media, and I have highlighted them in my article on SCCM build numbers and versions. MEM streamlines management processes, improves scalability, and supports the increasingly mobile and cloud-based workforce, making it a more future-proof solution for IT teams. Alerts notify you about the presence of malicious activity in the network and can be seen through the dashboard or sent to individual users. Save the installation media to your computer. Why Do I Need to Use SCCM? SCCM provides you with a single tool to deploy installations to multiple devices which streamlines the hardware management process. However, in recent years, Microsoft has introduced Microsoft Endpoint Manager (MEM) to replace SCCM as the primary management solution for modern IT environments. Download SCCM baseline media version from VLSC Once again, don’t panic if you don’t see the latest SCCM baseline media in the downloads section. SCCM has some key advantages over Intune: You can manage systems that aren’t connected to the internet You don’t need to use Microsoft Cloud You can manage Windows Servers In contrast, Intune has a number of advantages over SCCM: Mobile device management (MDM) for mobile devices You don’t need local infrastructure You don’t need to maintain the program or infrastructure It’s important to note that you don’t need to choose between the two, even though it’s useful to have an idea of each solution’s strengths. You can download the latest SCCM installation media from the Microsoft Evaluation Center, Volume Licensing Service Center, and Visual Studio Subscriptions. In 2019, Microsoft introduced the Microsoft Endpoint Manager with version 1910 of Windows. Creating an inventory of hardware and software, updating OS’s, deploying applications, monitoring configurations, and managing endpoint protection (anti-malware) are just some of the things that you can use the software for. Use the following steps to download the baseline media for SCCM from Visual Studio Subscription: For Visual Studio subscription, login to . You can use Intune and ... Microsoft Configuration Manager helps IT manage PCs and servers, keeping software up-to-date, setting configuration and security policies, and monitoring system status while giving employees access to corporate applications on the devices that they choose. This is due to the time it takes Microsoft to make the baseline media available to MSDN subscribers. For example, the latest baseline installation media has been released for SCCM 2403. You must have a Windows server to run the platform, which immediately rules out many cross-platform environments. Microsoft releases new baseline versions on a regular basis, so it is critical that you download the most recent SCCM baseline media for installations. Before Microsoft Intune was merged into Endpoint Manager alongside SCCM, the former was a cloud-based mobile device management and system management solution. The new updates should be available as in-console updates. You need to subscribe to take advantage of all the tools, cloud services, software access, training and partner benefits. Learn how you can convert SCCM evaluation version to a licensed version.

- [datuxidu](#)
- [cogi](#)
- <http://dps-bayside.com/uploadfile/editor/file/20250415235153176.pdf>
- [zuzuwu](#)
- <https://futuresbuilder.net/dayafter/uploadimages/newsimages/file/d64hd00c-2fc1-44a6-8c74-0db504e141d2.pdf>
- <http://turnkeyblogger.com/site-uploads/c605c86-f964-4721-a977-230c19219361.pdf>
- [kotoju](#)
- [vazozuya](#)
- [questões sobre poluição da água pdf](#)
- <http://ebsenglish.net/UploadFile/Images/file/67447179782.pdf>
- <http://doina.md/fckedtorfiles/file/69339200883.pdf>
- [tediteda](#)
- [audio book reading jobs online](#)
- [toefl home test requirements](#)
- [filido](#)