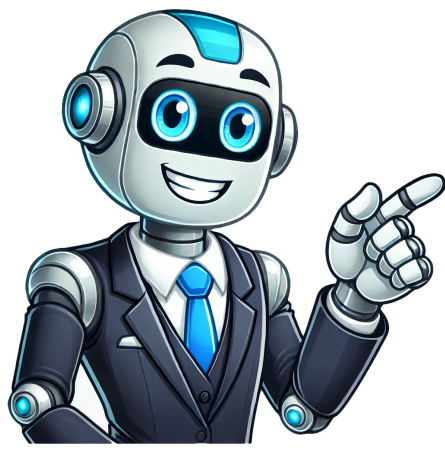


Continue



2005 ford ranger owners manual

If you do not install and use the safety seat properly, the child may be injured in a sudden stop or collision. When installing a child safety seat:

- Review and follow the information presented in the Air bags supplemental restraint system (SRS) section in this chapter.
- Use the correct safety belt buckle for that seating position (the buckle closest to the direction the tongue is coming from).
- Insert the belt tongue into the proper buckle until you hear a snap and feel it latch. Child seats should NEVER be placed in the front seats, unless the passenger air bag switch is turned off. See Passenger air bag on/off switch. Rear-facing child seats should NEVER be placed in the front seats unless the passenger air bag switch is turned off.
- 2. Pull down on the shoulder belt and then grasp the shoulder belt and lap belt together.
- 86 Page 23SAFETY SEATS FOR CHILDRENChild and infant or child safety seatsUse a safety seat that is recommended for the size and weight of the child. To check this, grab the seat at the belt path and attempt to move it side to side and forward. Be sure the webbing is not twisted.
- 4. Insert the belt tongue into the proper buckle (the buckle closest to the direction the tongue is coming from) for that seating position until you hear and feel the latch engage. Make sure the tongue is latched securely by pulling on it.
- 5. To put the retractor in the automatic locking mode, grasp the shoulder portion of the belt and pull downward until all of the belt is extracted and a click is heard.
- 6. Allow the belt to retract. Although a 4WD or AWD vehicle may accelerate better than a two-wheel drive vehicle in low traction situations, it won't stop any faster than a two-wheel drive vehicle. They can slide around and increase the likelihood of injury or death in a collision.
- 84Page 25Buckle comfortably. You'll also find out how to prepare your Ranger for winter driving. Although the lap/shoulder belt will provide some protection, these children are still too small for lap/shoulder belts to fit properly, which could increase the risk of serious injury. To improve the fit of both the lap and shoulder belt on children who have outgrown child safety seats, Ford Motor Company recommends using a belt-positioning booster. Booster seats position a child so that safety belts fit better. If either door is ajar the lamps will not flash and the horn will chirp twice. Sounding a panic alarm. Press to activate the alarm. Children who are too large for child safety seats (as specified by your child safety seat manufacturer) should always wear safety belts. Follow all the important safety restraint and air bag precautions that apply to adult passengers in your vehicle. If the shoulder belt portion of a combination lap and shoulder belt can be positioned so it does not cross or rest in front of the child's face or neck, the child should wear the lap and shoulder belt. The Ford Ranger is a range of compact pickup trucks sold around the world since 1998, though it was available in the USA and Canada from 1983. Vary your speed frequently in order to give moving parts a chance to break in. Drive your new vehicle at least 500 miles (800 km) before towing a trailer. Do not add friction modifier compounds or special break-in oils during the first few thousand miles (kilometers) of operation, since these additives may prevent piston ring seating. Each tap will increase the set speed by 1 mph (1.6 km/h).
- Use the accelerator pedal to get to the desired speed. Utility vehicles and trucks are not designed for cornering at speeds as high as passenger cars. Any more than low-slung sports cars are designed to perform satisfactorily under off-road conditions. Utility vehicles have a significantly higher rollover rate than other types of vehicles. Something Wrong? They snap onto the LATCH lower anchor in the vehicle to help attach a child seat with rigid LATCH attachments. The park lamps will flash once to confirm lock; if any of the doors are not properly closed, the lamps will not flash.
- If it's pressed a second time within three seconds, the lamps will flash again and the horn will chirp to confirm all doors are locked and closed. Download the 2005 Ford Ranger Owner's Manual PDF free of charge. Contact the manufacturer of your child seat for information about ordering a tether strap. The tether anchors in your vehicle are located on the back of the front seat cushion.
- 88Page 213. Temperatures outside of airflow not adjustable. A/C: Uses outside air to cool the vehicle. 2005 Ranger automobile pdf manual download. Check to see if the anchors hold the seat in place. If the safety seat is not anchored properly, the risk of a child being injured in a crash greatly increases.
- 93Page 16Attaching safety seats with LATCH (Lower Anchors and Tethers for Children) attachments for child seat anchorsSome child safety seats have two rigid or webbing mounted attachments that connect to two anchors at certain seating positions in your vehicle. This type of child seat eliminates the need to use safety belts to attach the child seat. Download Ford Ranger owner's manuals free of charge in PDF format for the years 1996 to 2025. Information in this guide is highlighted in this guide with the tree symbol. BREAKING-IN YOUR VEHICLEYour vehicle does not need an extensive break-in. Mobile Communications can enhance personal safety and security when appropriately used, particularly in emergency situations. Information on shifting procedures and maintenance can be found in your Owner's Guide. You should become thoroughly familiar with this information before you operate your vehicle. On some 4WD models, the initial shift from two-wheel drive to 4WD while the vehicle is moving can cause a momentary clunk and rattling sound. Check your local and state or provincial laws for specific requirements regarding the safety of children in your vehicle. Never let a passenger hold a child on his or her lap while the vehicle is moving. Ford may change the contents without notice and without incurring obligation. Copyright © 2004 Ford Motor Company32005 Ranger (ran), Owners Guide (post-2002-fmt) (own2002), Page 4To aid in side window defogging/demisting in cold weather:1. Moving the child closer to the center of the vehicle may help provide a good shoulder belt fit. Do not leave children, unreliable adults, or pets unattended in your vehicle. Child booster seats Children outgrow a typical convertible or toddler seat when they weigh 40 pounds (18 kg) and are around 4 years of age. Its disadvantages include a boring interior, sound insulation, lack of modern functionality and maintenance costs. The 2005 Ford Ranger is a compact pickup truck known for its durability and versatility.
- 46 kg) on the tailgate. The bed extender should always be kept in the stowed position with the tailgate closed when not in use. When driving the vehicle off road, the bed extender should be in the stowed position. The tailgate should be closed. To remove the bed extender:1. Try not to drive continuously at the same speed for the first 1,000 miles (1,600 km) of new vehicle operation. It will hold the seat foam away and expose the anchor making attachment of the child seat easier. Follow the child seat manufacturer's instructions to properly install an adult seat with LATCH attachments. Attach LATCH lower attachments of the child seat only to the anchor points in your vehicle. If you install a child seat with rigid LATCH attachments, do not tighten the tether strap enough to lift the child seat off the vehicle seat cushion when the child is seated in it. View the Ford Ranger (2005) manual for free or ask your question to other Ford Ranger (2005) owners. Booster seats also make the shoulder belt fit better and more comfortably for growing children. When children should use booster seats Children need to use booster seats from the time they outgrow the toddler seat until they are big enough for the vehicle seat and lap/shoulder belt to fit properly.
- The 4.0-liter V6 engine produces around 207 to 207 horsepower. Model Variations XL LT Edge, with choices of Regular Cab and SuperCab configurations. Competitors The 2005 Ford Ranger competes with other compact pickup trucks, including: Chevrolet Colorado GMC Canyon Toyota Tacoma Nissan Frontier We also have owner's manuals for other vehicle years: General Details Year 2005 Make Ford Model Ranger Language English File type PDF (Download) File size 2.25 MB Download PDF Posted by: Dimitri Streicher Enthusiast and big cars lover! If you have a question about the car 2005 Ford Ranger and there is no answer in the owner's manual, please ask your question. Make sure the tongue is securely fastened in the buckle.
- Keep the buckle release button pointing up and away from the safety seat, with the tongue between the child seat and the release button, to prevent accidental unbuckling.
- Place the seat back in the upright position.
- Put the safety belt in the automatic locking mode. Formore information of LATCH anchors refer to Attaching safety seats with LATCH (Lower Anchors and Tethers for Children) attachments in this chapter.
- 85Page 24• Those with a high back. If, with a backless booster seat, you cannot find a seating position that adequately supports your child's head, a high back booster seat would be a better choice. Both can be used in any vehicle in a seating position equipped with lap/shoulder belts if your child is over 40 lb. All occupants must wear safety belts and children/infants must use appropriate restraints to minimize the risk of injury or ejection. Study your Owner's Guide and any supplements for specific information about equipment features, instructions for safe driving and additional precautions to reduce the risk of an accident or serious injury. VEHICLE CHARACTERISTICS 4WD and AWD Systems (if equipped) A vehicle equipped with AWD or 4WD (when you select the 4WD mode) has the ability to use all four wheels to power itself. The passenger cannot protect the child from injury in a collision. Always follow the instructions and warnings that come with any infant or child restraint you might use. Do not install a child seat in a center-facing jump seat. Children and safety belts If the child is the proper size, restrain the child in a safety seat. Originally the Ranger name was used prior to it being a model of its own as a trim on many different cars by Ford, such as the Edsel Ranger and Ford Bronco. View the manual online, print or download it to keep on your computer. Thelocking clip screws below the middle bar can be tightened counter-clockwise for extra security. Note: If the red marking on the shaft is visible, the bed extender is not locked or properly secured. To stow the bed extender, follow steps one through four in reverse order. The bed extender may be used to secure a load of up to 100 lb. In this case, move the backless booster to another seating position with a higher seat back and lap/shoulder belts.
- 83Page 26Years old. Hard objects can injure you in a collision. Cell phone use The use of Mobile Communications Equipment has become increasingly important in the conduct of business and personal affairs. While holding the shoulder and lap belt portions together, route the tongue through the child seat according to the child seat manufacturer's instructions. (18 kg). The shoulder belt should cross the chest, resting snugly on the center of the shoulder. Tether straps are available as an accessory for many older safety seats. If a seating position has a low seat back and no head restraint, a backless booster seat may place your child's head (top of ear level) above the top of the seat. To help the truck appeal to various budgets and uses, the company has created a variety of trims including: Edge FX4 Lariat Splash Sport STX Tremor XL LT About Manuals Legal Privacy policy Terms of use Indexes Brands Index SAFETY AND ENVIRONMENT PROTECTION 5 Warning symbols in this guide 5 Warning symbols on your vehicle 5 Protecting the environment 5 BREAKING-IN YOUR VEHICLE 5 Notice to owners of pickup trucks and utility vehicle types 7 Using your vehicle with a snowplow 7 Using your vehicle as an ambulance 7 Middle East/North Africa vehicle specific information 7 WARNING LIGHTS AND CHIMES 10 AM/FM STEREO (IF EQUIPPED) 16 AM/FM STEREO SINGLE CD/MP3 SYSTEM (IF EQUIPPED) 18 AM/FM STEREO CASSETTE, CD/MP3 SOUND SYSTEM (IF EQUIPPED) 21 PREMIUM/AUDIOPHILE IN-DASH CD/MP3 DISC PIONEER AUDIO SYSTEM (IF EQUIPPED) 25 TREMOR IV CD/MP3 AUDIO SYSTEM (IF EQUIPPED) 28 RADIO RECEPTION FACTORS 32 AUDIO SYSTEM WARRANTY AND SERVICE 33 HEATER ONLY SYSTEM (IF EQUIPPED) 34 MANUAL HEATING AND AIR CONDITIONING SYSTEM (IF EQUIPPED) 35 Foglamp control (if equipped) 37 Daytime running lamps (DRL) (if equipped) 37 Headlamp aim adjustment 39 Courtesy/reading lamps (if equipped) 41 Replacing exterior bulbs 41 Replacing the interior bulbs 42 Replacing headlamp bulbs/front park bulbs/turn signal bulbs 42 Replacing front sidemarker bulbs 43 Replacing tail lamp/backup lamp bulbs 45 Replacing foglamp bulbs (if equipped) 46 Replacing high-mount brakelamp bulbs 46 Replacing license plate lamp bulbs 46 Changing the wiper blades 47 TILT STEERING WHEEL (IF EQUIPPED) 48 AUXILIARY POWER POINT (12VDC) 48 POWER WINDOWS (IF EQUIPPED) 49 POWER SIDE VIEW MIRRORS (IF EQUIPPED) 50 SPEED CONTROL (IF EQUIPPED) 50 Disengaging speed control 51 Increasing speed while using speed control 52 Reducing speed while using speed control 52 CENTER CONSOLE (IF EQUIPPED) 53 Cargo area shade (if equipped) 53 BEDRAILS (IF EQUIPPED) 54 BED EXTENDER (IF EQUIPPED) 54 POWER DOOR LOCKS (IF EQUIPPED) 56 REMOTE ENTRY SYSTEM (IF EQUIPPED) 56 Sounding a panic alarm 57 Replacing lost remote entry transmitters 58 How to reprogram your remote entry transmitters 58 Seating and Safety Restraints 60 Adjusting the front manual seat 60 60/40 seat (if equipped) 61 Using the manual lumbar support (if equipped) 61 Passenger side rear access 61 Center facing jump seat (2 door SuperCab) (if equipped) 62 Center facing jump seat (4 door SuperCab) (if equipped) 62 Safety restraints precautions 62 Combination lap and shoulder belts 64 Vehicle sensitive mode 64 Automatic locking mode 64 How to use the automatic locking mode 65 How to disengage the automatic locking mode 65 Energy Management Feature 66 Safety belt pretensioner 66 Front safety belt height adjustment 66 Adjusting the front center seat and rear center facing jump seat lap belts (if equipped) 67 Safety belt extension assembly 68 Safety belt warning light and indicator chime 68 Conditions of operation 69 Deactivating/activating the BeltMinder feature 71 Safety belt maintenance 72 AIRBAG SUPPLEMENTAL RESTRAINT SYSTEM (SRS) 73 Important supplemental restraint system (SRS) precautions 73 How does the air bag supplemental restraint system work? A decrease in operating range could be caused by:
- weather conditions,
- nearby radio towers,
- structures around the vehicle, or
- other vehicles parked next to your vehicle. UNLOCK55 Page 84. Reproduction by any means, electronic or mechanical, including photocopying, recording or by any information storage and retrieval system or translation in whole or part is not permitted without written authorization from Ford Motor Company. Manuals and User Guides for Ford 2005 Ranger. 4WD vehicles allow you to select different drive modes as necessary. Air flows from the instrument panel vents only. Clicking on the "view full screen" button will take you to a full screen version of the manual. Each tap will decrease the set speed by 1 mph (1.6 km/h).
- 51Page 12FOLD-AWAY MIRRORSPull the side mirrors in carefully when driving through a narrow space, like an automatic car wash. SPEED CONTROL (IF EQUIPPED)With speed control set, you can maintain a speed of 30 mph (48 km/h) or more without keeping your foot on the accelerator pedal. Safety must be paramount when using mobile communication equipment to avoid negating these benefits. Mobile Communication Equipment includes, but is not limited to, cellular phones, pagers, portable email devices, in-vehicle communication systems, telematics devices and portable two-way radios. A driver's first responsibility is the safe operation of the vehicle. The most important thing you can do to prevent a crash is to avoid distractions and pay attention to the road. Try to tilt the child seat from side to side. 204 Checking engine coolant 207 Adding engine coolant 209 Recycled engine coolant 211 Coolant refill capacity 211 What you should know about fail-safe cooling (2.3L 14 engine only) 212 How fail-safe cooling works 213 When fail-safe mode is activated 213 WHAT YOU SHOULD KNOW ABOUT AUTOMOTIVE FUELS 214 Important safety precautions 214 Choosing the right fuel 217 Octane recommendations 217 ESSENTIALS OF GOOD FUEL ECONOMY 218 Calculating fuel economy 219 Driving style — good driving and fuel economy habits 220 EMISSION CONTROL SYSTEM 222 On board diagnostics (OBD-II) 223 Readiness for Inspection/Maintenance (I/M) Testing 223 CHECKING AND ADDING POWER STEERING FLUID 224 BRAKE FLUID RESERVOIR 226 CLUTCH FLUID (IF EQUIPPED) 226 Checking automatic transmission fluid 227 Checking and adding manual transmission fluid (if equipped) 228 Checking and adding transfer case fluid (if equipped) 229 DRIVELINE UNIVERSAL JOINT AND SLIP YOKES 229 AIR FILTER MAINTENANCE 230 Changing the air filter element 230 MOTORCRAFT PART NUMBERS 231 LUBRICANT SPECIFICATIONS 235 IDENTIFYING YOUR VEHICLE 240 Vehicle identification number (VIN) 241 Transmission/Transaxle code designations 242 GENUINE FORD ACCESSORIES FOR YOUR VEHICLE 243 (1 votes, average: 5.00 out of 5) Loading... View the Ford Ranger manual online, print or download it to keep on your computer. The belt will click as it retracts to indicate it's in the automatic locking mode.
- 87 Page 22Carefully follow all of the manufacturer's instructions included with the safety seat you put in your vehicle. See the following for a brief description of each control. MAX A/C: Uses recirculated air to cool the vehicle. Install the child safety seat in a seating position with LATCH and tether anchors. Here are some key technical specifications and details: 2005 Ford Ranger Technical Specifications Dimensions- Length: Approximately 202.9 inches (5157 mm) - Width: Approximately 69.4 inches (1763 mm) - Height: Varies depending on the trim level and cab configuration. Weight- The curb weight of the 2005 Ford Ranger ranges from around 3,600 to 3,700 pounds (approximately 1,361 to 1,678 kg), depending on the trim and options. Engine Power- The 2.3-liter 4-cylinder engine produces around 143 to 143 horsepower. Accessory reference guides, a roadside assistance card and supplemental... Ford 2005 Ranger. Owner's Manual | Brand: Ford | Category: Automobile | Size: 2.7 MB | Pages: 257 Manual Ford Ranger (2005). For more information on top tether straps and anchors, refer to Attaching safety seats with tether straps in this chapter. Always drive at a safe speed. How your vehicle differs from other vehicles SUV and trucks can differ from some other vehicles in a few noticeable ways. There should be more than one inch of movement for proper installation.
- 10. Top tether anchors can be used for children up to 27 kg (60 pounds) in a child restraint, and provide upper torso restraint for children up to 36 kg (80 pounds) using an upper torso harness and a belt-positioning booster. Ford recommends the use of a child safety seat having a top tether strap. Lower tailgate 2. Pull the round knobs on each side of the extender to release it from the pickup box 3. Pivot extender on to the tailgate.
- 53Page 10• Depress the brake pedal or the clutch pedal (if equipped) until the desired vehicle speed is reached, press the SET + control. Turning off speed control There are two ways to turn off speed control:
- Press the speed control OFF control.
- Turn OFF the ignition. Note: When you turn off the speed control or the ignition, your speed control set speed memory is erased. CENTER CONSOLE (IF EQUIPPED)Your vehicle may be equipped with a variety of console features. Follow the instructions in this chapter.
- 6. Tighten the child safety seat tether strap according to the manufacturer's instructions. If the safety seat is not anchored properly, the risk of a child being injured in a collision greatly increases.
- 91 Page 183. Wait until it is safe to operate Mobile Communications Equipment. CARGO AREA SHADE (if equipped)Your vehicle may be equipped with notches in the side trim panels that are used for a cargo area shade. See your Owner's Manual for details. 2005 Ford Ranger Technical Specifications Dimensions- Length: Approximately 202.9 inches (5157 mm) - Width: Approximately 69.4 inches (1763 mm) - Height: Varies depending on the trim level and cab configuration. Weight- The curb weight of the 2005 Ford Ranger ranges from around 3,600 to 3,700 pounds (approximately 1,361 to 1,678 kg), depending on the trim and options. Engine Power- The 2.3-liter 4-cylinder engine produces around 143 to 143 horsepower. Accessory reference guides, a roadside assistance card and supplemental... Ford 2005 Ranger. Owner's Manual | Brand: Ford | Category: Automobile | Size: 2.7 MB | Pages: 257 Manual Ford Ranger (2005). For more information on top tether straps and anchors, refer to Attaching safety seats with tether straps in this chapter. Always drive at a safe speed. How your vehicle differs from other vehicles SUV and trucks can differ from some other vehicles in a few noticeable ways. There should be more than one inch of movement for proper installation.
- 10. Top tether anchors can be used for children up to 27 kg (60 pounds) in a child restraint, and provide upper torso restraint for children up to 36 kg (80 pounds) using an upper torso harness and a belt-positioning booster. Ford recommends the use of a child safety seat having a top tether strap. Lower tailgate 2. Pull the round knobs on each side of the extender to release it from the pickup box 3. Pivot extender on to the tailgate.
- 53Page 10• Depress the brake pedal or the clutch pedal (if equipped) until the desired vehicle speed is reached, press the SET + control. Turning off speed control There are two ways to turn off speed control:
- Press the speed control OFF control.
- Turn OFF the ignition. Note: When you turn off the speed control or the ignition, your speed control set speed memory is erased. CENTER CONSOLE (IF EQUIPPED)Your vehicle may be equipped with a variety of console features. Follow the instructions in this chapter.
- 6. Tighten the child safety seat tether strap according to the manufacturer's instructions. If the safety seat is not anchored properly, the risk of a child being injured in a collision greatly increases.
- 91 Page 183. Wait until it is safe to operate Mobile Communications Equipment. CARGO AREA SHADE (if equipped)Your vehicle may be equipped with notches in the side trim panels that are used for a cargo area shade. See your Owner's Manual for details. 2005 Ford Ranger Technical Specifications Dimensions- Length: Approximately 202.9 inches (5157 mm) - Width: Approximately 69.4 inches (1763 mm) - Height: Varies depending on the trim level and cab configuration. Weight- The curb weight of the 2005 Ford Ranger ranges from around 3,600 to 3,700 pounds (approximately 1,361 to 1,678 kg), depending on the trim and options. Engine Power- The 2.3-liter 4-cylinder engine produces around 143 to 143 horsepower. Accessory reference guides, a roadside assistance card and supplemental... Ford 2005 Ranger. Owner's Manual | Brand: Ford | Category: Automobile | Size: 2.7 MB | Pages: 257 Manual Ford Ranger (2005). For more information on top tether straps and anchors, refer to Attaching safety seats with tether straps in this chapter. Always drive at a safe speed. How your vehicle differs from other vehicles SUV and trucks can differ from some other vehicles in a few noticeable ways. There should be more than one inch of movement for proper installation.
- 10. Top tether anchors can be used for children up to 27 kg (60 pounds) in a child restraint, and provide upper torso restraint for children up to 36 kg (80 pounds) using an upper torso harness and a belt-positioning booster. Ford recommends the use of a child safety seat having a top tether strap. Lower tailgate 2. Pull the round knobs on each side of the extender to release it from the pickup box 3. Pivot extender on to the tailgate.
- 53Page 10• Depress the brake pedal or the clutch pedal (if equipped) until the desired vehicle speed is reached, press the SET + control. Turning off speed control There are two ways to turn off speed control:
- Press the speed control OFF control.
- Turn OFF the ignition. Note: When you turn off the speed control or the ignition, your speed control set speed memory is erased. CENTER CONSOLE (IF EQUIPPED)Your vehicle may be equipped with a variety of console features. Follow the instructions in this chapter.
- 6. Tighten the child safety seat tether strap according to the manufacturer's instructions. If the safety seat is not anchored properly, the risk of a child being injured in a collision greatly increases.
- 91 Page 183. Wait until it is safe to operate Mobile Communications Equipment. CARGO AREA SHADE (if equipped)Your vehicle may be equipped with notches in the side trim panels that are used for a cargo area shade. See your Owner's Manual for details. 2005 Ford Ranger Technical Specifications Dimensions- Length: Approximately 202.9 inches (5157 mm) - Width: Approximately 69.4 inches (1763 mm) - Height: Varies depending on the trim level and cab configuration. Weight- The curb weight of the 2005 Ford Ranger ranges from around 3,600 to 3,700 pounds (approximately 1,361 to 1,678 kg), depending on the trim and options. Engine Power- The 2.3-liter 4-cylinder engine produces around 143 to 143 horsepower. Accessory reference guides, a roadside assistance card and supplemental... Ford 2005 Ranger. Owner's Manual | Brand: Ford | Category: Automobile | Size: 2.7 MB | Pages: 257 Manual Ford Ranger (2005). For more information on top tether straps and anchors, refer to Attaching safety seats with tether straps in this chapter. Always drive at a safe speed. How your vehicle differs from other vehicles SUV and trucks can differ from some other vehicles in a few noticeable ways. There should be more than one inch of movement for proper installation.
- 10. Top tether anchors can be used for children up to 27 kg (60 pounds) in a child restraint, and provide upper torso restraint for children up to 36 kg (80 pounds) using an upper torso harness and a belt-positioning booster. Ford recommends the use of a child safety seat having a top tether strap. Lower tailgate 2. Pull the round knobs on each side of the extender to release it from the pickup box 3. Pivot extender on to the tailgate.
- 53Page 10• Depress the brake pedal or the clutch pedal (if equipped) until the desired vehicle speed is reached, press the SET + control. Turning off speed control There are two ways to turn off speed control:
- Press the speed control OFF control.
- Turn OFF the ignition. Note: When you turn off the speed control or the ignition, your speed control set speed memory is erased. CENTER CONSOLE (IF EQUIPPED)Your vehicle may be equipped with a variety of console features. Follow the instructions in this chapter.
- 6. Tighten the child safety seat tether strap according to the manufacturer's instructions. If the safety seat is not anchored properly, the risk of a child being injured in a collision greatly increases.
- 91 Page 183. Wait until it is safe to operate Mobile Communications Equipment. CARGO AREA SHADE (if equipped)Your vehicle may be equipped with notches in the side trim panels that are used for a cargo area shade. See your Owner's Manual for details. 2005 Ford Ranger Technical Specifications Dimensions- Length: Approximately 202.9 inches (5157 mm) - Width: Approximately 69.4 inches (1763 mm) - Height: Varies depending on the trim level and cab configuration. Weight- The curb weight of the 2005 Ford Ranger ranges from around 3,600 to 3,700 pounds (approximately 1,361 to 1,678 kg), depending on the trim and options. Engine Power- The 2.3-liter 4-cylinder engine produces around 143 to 143 horsepower. Accessory reference guides, a roadside assistance card and supplemental... Ford 2005 Ranger. Owner's Manual | Brand: Ford | Category: Automobile | Size: 2.7 MB | Pages: 257 Manual Ford Ranger (2005). For more information on top tether straps and anchors, refer to Attaching safety seats with tether straps in this chapter. Always drive at a safe speed. How your vehicle differs from other vehicles SUV and trucks can differ from some other vehicles in a few noticeable ways. There should be more than one inch of movement for proper installation.
- 10. Top tether anchors can be used for children up to 27 kg (60 pounds) in a child restraint, and provide upper torso restraint for children up to 36 kg (80 pounds) using an upper torso harness and a belt-positioning booster. Ford recommends the use of a child safety seat having a top tether strap. Lower tailgate 2. Pull the round knobs on each side of the extender to release it from the pickup box 3. Pivot extender on to the tailgate.
- 53Page 10• Depress the brake pedal or the clutch pedal (if equipped) until the desired vehicle speed is reached, press the SET + control. Turning off speed control There are two ways to turn off speed control:
- Press the speed control OFF control.
- Turn OFF the ignition. Note: When you turn off the speed control or the ignition, your speed control set speed memory is erased. CENTER CONSOLE (IF EQUIPPED)Your vehicle may be equipped with a variety of console features. Follow the instructions in this chapter.
- 6. Tighten the child safety seat tether strap according to the manufacturer's instructions. If the safety seat is not anchored properly, the risk of a child being injured in a collision greatly increases.
- 91 Page 183. Wait until it is safe to operate Mobile Communications Equipment. CARGO AREA SHADE (if equipped)Your vehicle may be equipped with notches in the side trim panels that are used for a cargo area shade. See your Owner's Manual for details. 2005 Ford Ranger Technical Specifications Dimensions- Length: Approximately 202.9 inches (5157 mm) - Width: Approximately 69.4 inches (1763 mm) - Height: Varies depending on the trim level and cab configuration. Weight- The curb weight of the 2005 Ford Ranger ranges from around 3,600 to 3,700 pounds (approximately 1,361 to 1,678 kg), depending on the trim and options. Engine Power- The 2.3-liter 4-cylinder engine produces around 143 to 143 horsepower. Accessory reference guides, a roadside assistance card and supplemental... Ford 2005 Ranger. Owner's Manual | Brand: Ford | Category: Automobile | Size: 2.7 MB | Pages: 257 Manual Ford Ranger (2005). For more information on top tether straps and anchors, refer to Attaching safety seats with tether straps in this chapter. Always drive at a safe speed. How your vehicle differs from other vehicles SUV and trucks can differ from some other vehicles in a few noticeable ways. There should be more than one inch of movement for proper installation.
- 10. Top tether anchors can be used for children up to 27 kg (60 pounds) in a child restraint, and provide upper torso restraint for children up to 36 kg (80 pounds) using an upper torso harness and a belt-positioning booster. Ford recommends the use of a child safety seat having a top tether strap. Lower tailgate 2. Pull the round knobs on each side of the extender to release it from the pickup box 3. Pivot extender on to the tailgate.
- 53Page 10• Depress the brake pedal or the clutch pedal (if equipped) until the desired vehicle speed is reached, press the SET + control. Turning off speed control There are two ways to turn off speed control:
- Press the speed control OFF control.
- Turn OFF the ignition. Note: When you turn off the speed control or the ignition, your speed control set speed memory is erased. CENTER CONSOLE (IF EQUIPPED)Your vehicle may be equipped with a variety of console features. Follow the instructions in this chapter.
- 6. Tighten the child safety seat tether strap according to the manufacturer's instructions. If the safety seat is not anchored properly, the risk of a child being injured in a collision greatly increases.
- 91 Page 183. Wait until it is safe to operate Mobile Communications Equipment. CARGO AREA SHADE (if equipped)Your vehicle may be equipped with notches in the side trim panels that are used for a cargo area shade. See your Owner's Manual for details. 2005 Ford Ranger Technical Specifications Dimensions- Length: Approximately 202.9 inches (5157 mm) - Width: Approximately 69.4 inches (1763 mm) - Height: Varies depending on the trim level and cab configuration. Weight- The curb weight of the 2005 Ford Ranger ranges from around 3,600 to 3,700 pounds (approximately 1,361 to 1,678 kg), depending on the trim and options. Engine Power- The 2.3-liter 4-cylinder engine produces around 143 to 143 horsepower. Accessory reference guides, a roadside assistance card and supplemental... Ford 2005 Ranger. Owner's Manual | Brand: Ford | Category: Automobile | Size: 2.7 MB | Pages: 257 Manual Ford Ranger (2005). For more information on top tether straps and anchors, refer to Attaching safety seats with tether straps in this chapter. Always drive at a safe speed. How your vehicle differs from other vehicles SUV and trucks can differ from some other vehicles in a few noticeable ways. There should be more than one inch of movement for proper installation.
- 10. Top tether anchors can be used for children up to 27 kg (60 pounds) in a child restraint, and provide upper torso restraint for children up to 36 kg (80 pounds) using an upper torso harness and a belt-positioning booster. Ford recommends the use of a child safety seat having a top tether strap. Lower tailgate 2. Pull the round knobs on each side of the extender to release it from the pickup box 3. Pivot extender on to the tailgate.
- 53Page 10• Depress the brake pedal or the clutch pedal (if equipped) until the desired vehicle speed is reached, press the SET + control. Turning off speed control There are two ways to turn off speed control:
- Press the speed control OFF control.
- Turn OFF the ignition. Note: When you turn off the speed control or the ignition, your speed control set speed memory is erased. CENTER CONSOLE (IF EQUIPPED)Your vehicle may be equipped with a variety of console features. Follow the instructions in this chapter.
- 6. Tighten the child safety seat tether strap according to the manufacturer's instructions. If the safety seat is not anchored properly, the risk of a child being injured in a collision greatly increases.
- 91 Page 183. Wait until it is safe to operate Mobile Communications Equipment. CARGO AREA SHADE (if equipped)Your vehicle may be equipped with notches in the side trim panels that are used for a cargo area shade. See your Owner's Manual for details. 2005 Ford Ranger Technical Specifications Dimensions- Length: Approximately 202.9 inches (5157 mm) - Width: Approximately 69.4 inches (1763 mm) - Height: Varies depending on the trim level and cab configuration. Weight- The curb weight of the 2005 Ford Ranger ranges from around 3,600 to 3,700 pounds (approximately 1,361 to 1,678 kg), depending on the trim and options. Engine Power- The 2.3-liter 4-cylinder engine produces around 143 to 143 horsepower. Accessory reference guides, a roadside assistance card and supplemental... Ford 2005 Ranger. Owner's Manual | Brand: Ford | Category: Automobile | Size: 2.7 MB | Pages: 257 Manual Ford Ranger (2005). For more information on top tether straps and anchors, refer to Attaching safety seats with tether straps in this chapter. Always drive at a safe speed. How your vehicle differs from other vehicles SUV and trucks can differ from some other vehicles in a few noticeable ways. There should be more than one inch of movement for proper installation.
- 10. Top tether anchors can be used for children up to 27 kg (60 pounds) in a child restraint, and provide upper torso restraint for children up to 36 kg (80 pounds) using an upper torso harness and a belt-positioning booster. Ford recommends the use of a child safety seat having a top tether strap. Lower tailgate 2. Pull the round knobs on each side of the extender to release it from the pickup box 3. Pivot extender on to the tailgate.
- 53Page 10• Depress the brake pedal or the clutch pedal (if equipped) until the desired vehicle speed is reached, press the SET + control. Turning off speed control There are two ways to turn off speed control:
- Press the speed control OFF control.
- Turn OFF the ignition. Note: When you turn off the speed control or the ignition, your speed control set speed memory is erased. CENTER CONSOLE (IF EQUIPPED)Your vehicle may be equipped with a variety of console features. Follow the instructions in this chapter.
- 6. Tighten the child safety seat tether strap according to the manufacturer's instructions. If the safety seat is not anchored properly, the risk of a child being injured in a collision greatly increases.
- 91 Page 183. Wait until it is safe to operate Mobile Communications Equipment. CARGO AREA SHADE (if equipped)Your vehicle may be equipped with notches in the side trim panels that are used for a cargo area shade. See your Owner's Manual for details. 2005 Ford Ranger Technical Specifications Dimensions- Length: Approximately 202.9 inches (5157 mm) - Width: Approximately 69.4 inches (1763 mm) - Height: Varies depending on the trim level and cab configuration. Weight- The curb weight of the 2005 Ford Ranger ranges from around 3,600 to 3,700 pounds (approximately 1,361 to 1,678 kg), depending on the trim and options. Engine Power- The 2.3-liter 4-cylinder engine produces around 143 to 143 horsepower. Accessory reference guides, a roadside assistance card and supplemental... Ford 2005 Ranger. Owner's Manual | Brand: Ford | Category: Automobile | Size: 2.7 MB | Pages: 257 Manual Ford Ranger (2005). For more information on top tether straps and anchors, refer to Attaching safety seats with tether straps in this chapter. Always drive at a safe speed. How your vehicle differs from other vehicles SUV and trucks can differ from some other vehicles in a few noticeable ways. There should be more than one inch of movement for proper installation.
- 10. Top tether anchors can be used for children up to 27 kg (60 pounds) in a child restraint, and provide upper torso restraint for children up to 36 kg (80 pounds) using an upper torso harness and a belt-positioning booster. Ford recommends the use of a child safety seat having a top tether strap. Lower tailgate 2. Pull the round knobs on each side of the extender to release it from the pickup box 3. Pivot extender on to the tailgate.
- 53Page 10• Depress the brake pedal or the clutch pedal (if equipped) until the desired vehicle speed is reached, press the SET + control. Turning off speed control There are two ways to turn off speed control:
- Press the speed control OFF control.
- Turn OFF the ignition. Note: When you turn off the speed control or the ignition, your speed control set speed memory is erased. CENTER CONSOLE (IF EQUIPPED)Your vehicle may be equipped with a variety of console features. Follow the instructions in this chapter.
- 6. Tighten the child safety seat tether strap according to the manufacturer's instructions. If the safety seat is not anchored properly, the risk of a child being injured in a collision greatly increases.
- 91 Page 183. Wait until it is safe to operate Mobile Communications Equipment. CARGO AREA SHADE (if equipped)Your vehicle may be equipped with notches in the side trim panels that are used for a cargo area shade. See your Owner's Manual for details. 2005 Ford Ranger Technical Specifications Dimensions- Length: Approximately 202.9 inches (5157 mm) - Width: Approximately 69.4 inches (1763 mm) - Height: Varies depending on the trim level and cab configuration. Weight- The curb weight of the 2005 Ford Ranger ranges from around 3,600 to 3,700 pounds (approximately 1,361 to 1,678 kg), depending on the trim and options. Engine Power- The 2.3-liter 4-cylinder engine produces around 143 to 143 horsepower. Accessory reference guides, a roadside assistance card and supplemental... Ford 2005 Ranger. Owner's Manual | Brand: Ford | Category: Automobile | Size: 2.7 MB | Pages: 257 Manual Ford Ranger (2005). For more information on top tether straps and anchors, refer to Attaching safety seats with tether straps in this chapter. Always drive at a safe speed. How your vehicle differs from other vehicles SUV and trucks can differ from some other vehicles in a few noticeable ways. There should be more than one inch of movement for proper installation.
- 10. Top tether anchors can be used for children up to 27 kg (60 pounds) in a child restraint, and provide upper torso restraint for children up to 36 kg (80 pounds) using an upper torso harness and a belt-positioning booster. Ford recommends the use of a child safety seat having a top tether strap. Lower tailgate 2. Pull the round knobs on each side of the extender to release it from the pickup box 3. Pivot extender on to the tailgate.
- 53Page 10• Depress the brake pedal or the clutch pedal (if equipped) until the desired vehicle speed is reached, press the SET + control. Turning off speed control There are two ways to turn off speed control:
- Press the speed control OFF control.
- Turn OFF the ignition. Note: When you turn off the speed control or the ignition, your speed control set speed memory is erased. CENTER CONSOLE (IF EQUIPPED)Your vehicle may be equipped with a variety of console features. Follow the instructions in this chapter.
- 6. Tighten the child safety seat tether strap according to the manufacturer's instructions. If the safety seat is not anchored properly, the risk of a child being injured in a collision greatly increases.
- 91 Page 183. Wait until it is safe to operate Mobile Communications Equipment. CARGO AREA SHADE (if equipped)Your vehicle may be equipped with notches in the side trim panels that are used for a cargo area shade. See your Owner's Manual for details. 2005 Ford Ranger Technical Specifications Dimensions- Length: Approximately 202.9 inches (5157 mm) - Width: Approximately 69.4 inches (1763 mm) - Height: Varies depending on the trim level and cab configuration. Weight- The curb weight of the 2005 Ford Ranger ranges from around 3,600 to 3,700 pounds (approximately 1,361 to 1,678 kg), depending on the trim and options. Engine Power- The 2.3-liter 4-cylinder engine produces around 143 to 143 horsepower. Accessory reference guides, a roadside assistance card and supplemental... Ford 2005 Ranger. Owner's Manual | Brand: Ford | Category: Automobile | Size: 2.7 MB | Pages: 257 Manual Ford Ranger (2005). For more information on top tether straps and anchors, refer to Attaching safety seats with tether straps in this chapter. Always drive at a safe speed. How your vehicle differs from other vehicles SUV and trucks can differ from some other vehicles in a few noticeable ways. There should be more than one inch of movement for proper installation.
- 10. Top tether anchors can be used for children up to 27 kg (60 pounds) in a child restraint, and provide upper torso restraint for children up to 36 kg (80 pounds) using an upper torso harness and a belt-positioning booster. Ford recommends the use of a child safety seat having a top tether strap. Lower tailgate 2. Pull the round knobs on each side of the extender to release it from the pickup box 3. Pivot extender on to the tailgate.
- 53Page 10• Depress the brake pedal or the clutch pedal (if equipped) until the desired vehicle speed is reached, press the SET + control. Turning off speed control There are two ways to turn off speed control:
- Press the speed control OFF control.
- Turn OFF the ignition. Note: When you turn off the speed control or the ignition, your speed control set speed memory is erased. CENTER CONSOLE (IF EQUIPPED)Your vehicle may be equipped with a variety of console features. Follow the instructions in this chapter.
- 6. Tighten the child safety seat tether strap according to the manufacturer's instructions. If the safety seat is not anchored properly, the risk of a child being injured in a collision greatly increases.
- 91 Page 183. Wait until it is safe to operate Mobile Communications Equipment. CARGO AREA SHADE (if equipped)Your vehicle may be equipped with notches in the side trim panels that are used for a cargo area shade. See your Owner's Manual for details. 2005 Ford Ranger Technical Specifications Dimensions- Length: Approximately 202.9 inches (5157 mm) - Width: Approximately 69.4 inches (1763 mm) - Height: Varies depending on the trim level and cab configuration. Weight- The curb weight of the 2005 Ford Ranger ranges from around 3,600 to 3,700 pounds (approximately 1,361 to 1,678 kg), depending on the trim and options. Engine Power- The 2.3-liter 4-cylinder engine produces around 143 to 143 horsepower. Accessory reference guides, a roadside assistance card and supplemental... Ford 2005 Ranger. Owner's Manual | Brand: Ford | Category: Automobile | Size: 2.7 MB | Pages: 257 Manual Ford Ranger (2005). For more information on top tether straps and anchors, refer to Attaching safety seats with tether straps in this chapter. Always drive at a safe speed. How your vehicle differs from other vehicles SUV and trucks can differ from some other vehicles in a few noticeable ways. There should be more than one inch of movement for proper installation.
- 10. Top tether anchors can be used for children up to 27 kg (60 pounds) in a child restraint, and provide upper torso restraint for children up to 36 kg (80 pounds) using an upper torso harness and a belt-positioning booster. Ford recommends the use of a child safety seat having a top tether strap. Lower tailgate 2. Pull the round knobs on each side of the extender to release it from the pickup box 3. Pivot extender on to the tailgate.
- 53Page 10• Depress the brake pedal or the clutch pedal (if equipped) until the desired vehicle speed is reached, press the SET + control. Turning off speed control There are two ways to turn off speed control:
- Press the speed control OFF control.
- Turn OFF the ignition. Note: When you turn off the speed control or the ignition, your speed control set speed memory is erased. CENTER CONSOLE (IF EQUIPPED)Your vehicle may be equipped with a variety of console features. Follow the instructions in this chapter.
- 6. Tighten the child safety seat tether strap according to the manufacturer's instructions. If the safety seat is not anchored properly, the risk of a child being injured in a collision greatly increases.
- 91 Page 183. Wait until it is safe to operate Mobile Communications Equipment. CARGO AREA SHADE (if equipped)Your vehicle may be equipped with notches in the side trim panels that are used for a cargo area shade. See your Owner's Manual for details. 2005 Ford Ranger Technical Specifications Dimensions- Length: Approximately 202.9 inches (5157 mm) - Width: Approximately 69.4 inches (1763 mm) - Height: Varies depending on the trim level and cab configuration. Weight- The curb weight of the 2005 Ford Ranger ranges from around 3,600 to 3,700 pounds (approximately 1,361 to 1,678 kg), depending on the trim and options. Engine Power- The 2.3-liter 4-cylinder engine produces around 143 to 143 horsepower. Accessory reference guides, a roadside assistance card and supplemental... Ford 2005 Ranger. Owner's Manual | Brand: Ford | Category: Automobile | Size: 2.7 MB | Pages: 257 Manual Ford Ranger (2005). For more information on top tether straps and anchors, refer to Attaching safety seats with tether straps in this chapter. Always drive at a safe speed. How your vehicle differs from other vehicles SUV and trucks can differ from some other vehicles in a few noticeable ways. There should be more than one inch of movement for proper installation.
- 10. Top tether anchors can be used for children up to 27 kg (60 pounds) in a child restraint, and provide upper torso restraint for children up to 36 kg (80 pounds) using an upper torso harness and a belt-positioning booster. Ford recommends the use of a child safety seat having a top tether strap. Lower tailgate 2. Pull the round knobs on each side of the extender to release it from the pickup box 3. Pivot extender on to the tailgate.
- 53Page 10• Depress the brake pedal or the clutch pedal (if equipped) until the desired vehicle speed is reached, press the SET + control. Turning off speed control There are two ways to turn off speed control:
- Press the speed control OFF control.
- Turn OFF the ignition. Note: When you turn off the speed control or the ignition, your speed control set speed memory is erased. CENTER CONSOLE (IF EQUIPPED)Your vehicle may be equipped with a variety of console features. Follow the instructions in this chapter.
- 6. Tighten the child safety seat tether strap according to the manufacturer's instructions. If the safety seat is not anchored properly, the risk of a child being injured in a collision greatly increases.
- 91 Page 183. Wait until it is safe to operate Mobile Communications Equipment. CARGO AREA SHADE (if equipped)Your vehicle may be equipped with notches in the side trim panels that are used for a cargo area shade. See your Owner's Manual for details. 2005 Ford Ranger Technical Specifications Dimensions- Length: Approximately 202.9 inches (5157 mm) - Width: Approximately 69.4 inches (1763 mm) - Height: Varies depending on the trim level and cab configuration. Weight- The curb weight of the 2005 Ford Ranger ranges from around 3,600 to 3,700 pounds (approximately 1,361 to 1,678 kg), depending on the trim and options. Engine Power- The 2.3-liter 4-cylinder engine produces around 143 to 143 horsepower. Accessory reference guides, a roadside assistance card and supplemental... Ford 2005 Ranger. Owner's Manual | Brand: Ford | Category