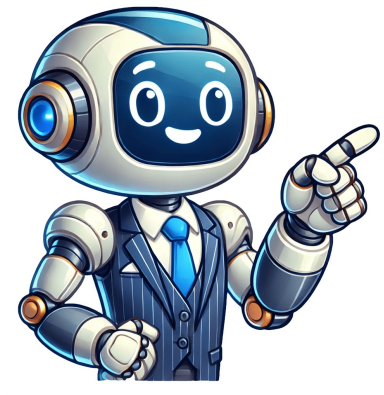


Continue



























January 2, 2025 / By GardenYard Want a well-manicured garden? Dont we all! This look would be impossible without your petrol trimmer keeping the weeds out of your way and the lawn edging crisp.But to use it, youve got to know how to start it. This article takes you through cold-starting your petrol trimmer and firing it up when its warm, too!How to Start a Petrol Trimmer Cold Start8 straightforward steps. Thats all it takes to get your petrol trimmer going. Follow these, and you cant go wrong!1. Mix FuelFunnily enough, a petrol trimmer wont work without fuel. But its not just petrol that the trimmer requires. Youll need to mix unleaded petrol with semi-synthetic 2-stroke oil at a ratio of 40:1.Your petrol trimmer should have come with a lidded measuring jug. Youll likely find guidelines on the side, so use these for reference! Put the lid back on the jug and give it a good shake.2. Fuel Up!Fuel up your trimmer with your pre-mixed fuel. Take off your trimmers fuel cap and pour your mix in. The tank should end up being full. No more, no less.3. Its Time to PrimePress down on the priming bulb between 5 and 8 times. Youll require fewer starter cord pulls to start the trimmer after this. Fuel should be travelling into the priming bulb at this point.If its not, theres a problem. Check the troubleshooting tips further into the article for guidance.4. Turn it OnNow, its time to turn it on. Reposition the switch so its on the On setting. This may appear as an I on some trimmers.5. Give it Some ThrottleThe next thing to reposition is the choke. Change this to the Start position and squeeze the throttle lever. Only do this once!6. Get Your Trimmer in a Sturdy PositionBefore you even think about moving onto the pull-start, youll want to place your trimmer on the ground in a sturdy position. Ensure the pull-start is facing you and the cutting area isnt making contact with anything.7. Pull Start!Then, place your left hand on the trimmer neck and use your right to grab hold of the pull start. Gently bring the pull start towards you until you feel resistance, then tug hard 3 5 times until the engine starts to roar.The best way to start up your trimmer is using a vertical pulling motion. Keep the rope taut, not letting any slack touch the trimmer casing.8. Increase the AirflowIncrease the airflow into your trimmer by moving the choke to Run or Open. Press down on the throttle a little, then leave it to run for around 40 seconds. Now, its time to get trimming!What To Do if the Trimmer Doesnt StartOk, so youve followed the instructions precisely, but your trimmer is sitting there silent. There are 5 things you can do to check the condition of your petrol trimmer. Measuring your fuel mix wrong is an easy mistake to make. In fact, its the most common blunder. Did you definitely add 40 parts unleaded to 1 part 2-stroke oil?If theres no mistake there, consider the age of your petrol. It should be less than 6 weeks old. Your petrol trimmer wont like stale fuel. Theres a delicate balance between fuel and air. This balance needs to be maintained for the trimmer to work.You can tell if the balance is wrong because the start is slow. It doesnt have its usual roar! Find your trimmers adjustment screw, then turn it as far clockwise as possible. Rewind it 1.5 2 turns, and try the starting process again. If it still has no life, check that the engine isnt flooded. This happens if you pull the start mechanism too many times.Dont worry, theres an easy solution. Just check the spark plug isnt damp. Take the spark plug out and let some of the fuel evaporate if you suspect its flooded. Put the plug back, then try the start process again. Expose the spark plug by taking off the top cover. Take out your spanner and remove the spark plug wire and the spark plug itself.Then, holding the spark plugs boot end, tap its electrode tip onto a metal surface. Switch your trimmer on if its not already, and yank the pull start with your spare hand. The spark plug will produce blue sparks if its in good working order. The tank filter can sometimes stop fuel from travelling into the engine. Check theres fuel in the priming bulb. If not, open your trimmers fuel tank and reposition the fuel filter, so its not as close to the neck of the tank.Then, try to start your trimmer again.If youre still struggling to fire up your trimmer, its time to call in an expert.How to Start a Petrol Trimmer Warm StartYouve already got past the cold start stage, and youve had your trimmer up and running. Youve switched it off momentarily, but now youre ready to continue.Firing up your petrol trimmer from warm is easy peasy. Even a child could do it although I wouldnt recommend it! Just position the Start/Stop switch to Start, place the choke on Run, then yank the starter cord. Once the motor is running, youre good to go!Lets Get Strimming!Youve almost achieved that pristine garden youve always wanted. If youre starting your petrol trimmer from cold, follow the 8 easy steps above, and use the troubleshooting guide if its not playing ball.If youve already got your trimmer going, what are you waiting for? Perform a warm start, and keep up the good work! Last Updated on March 13, 2025 by SharajIf you have a garden or lawn to maintain, a petrol trimmer can be a handy tool to have.Strimmers, also known as string trimmers or weed whackers, are perfect for keeping overgrown grass, weeds, and unruly vegetation in check. However, if you are new to using a petrol trimmer, getting started might seem a bit daunting. Fear not!In this article, we will walk you through everything you need to know about starting and using a petrol trimmer like a pro. From safety precautions to step-by-step instructions, weve got you covered. How to Start a Petrol TrimmerStarting a petrol trimmer for the first time requires some basic knowledge and preparation. Follow these steps to ensure a smooth and successful start:Safety First: Gear Up!: Before starting the petrol trimmer, prioritize safety. Wear appropriate personal protective equipment (PPE) such as safety goggles, ear protection, gloves, and long pants. Make sure your clothing is snug-fitting to avoid entanglement with the trimmers rotating parts.Check the Fuel and Oil Levels: Ensure there is enough fuel and oil in the trimmer. Refer to the manufacturers instructions for the correct fuel-oil mixture ratio. Using the wrong mixture can damage the engine or cause performance issues.Inspect the Trimmer: Thoroughly inspect the trimmer for any visible damage or loose parts. Check the cutting head, guard, and handle for proper alignment and secure attachment.Prime the Engine: To prime the engine, press the primer bulb several times until you see fuel flowing through the fuel lines. This helps in easier starting by filling the carburetor with fuel.Set the Choke and Throttle: Set the choke to the closed position if the engine is cold. If its warm, keep the choke open. Adjust the throttle to the Start position.Place the Trimmer on the Ground: Place the trimmer on a flat, stable surface, preferably the ground. Ensure the cutting head is away from any obstructions.Pull the Starter Cord: Grasp the starter cord firmly and give it a smooth, steady pull. The engine should start with a purring sound. If it doesnt start on the first try, give it another pull while following the proper starting technique.Warm Up the Engine: Let the engine warm up for a minute or two before proceeding. This ensures the engine reaches its optimal operating temperature.Disengage the Choke and Adjust the Throttle: Once the engine is warm, disengage the choke and adjust the throttle to the desired speed for trimming.Start Strimming!: Hold the trimmer with both hands and begin strimming by moving the cutting head along the ground in a smooth, sweeping motion. Keep a steady pace to achieve even results.Tips for Using a Petrol Trimmer EffectivelyUsing a petrol trimmer effectively requires more than just knowing how to start it. Here are some valuable tips to enhance your trimming experience.Maintain the Right Cutting Height: Adjust the cutting height of the trimmer based on the vegetation you are trimming. For long grass or weeds, a higher cutting height is suitable, while shorter grass requires a lower setting.Edge Carefully: When edging along pathways or flowerbeds, tilt the trimmer head vertically to create a neat and precise edge. Take it slow to avoid damaging nearby plants or surfaces.Keep an Eye on the Line: The trimmers cutting line will wear down with use. Check regularly and replace it when it becomes too short. Using a worn-out line reduces cutting efficiency.Avoid Strimming Near Solid Objects: Avoid strimming near solid objects like rocks, tree trunks, or fences. The cutting line can break or wear out quickly when it comes into contact with hard surfaces.Use the Right Technique: Move the trimmer from side to side in a steady motion to achieve even cutting. Overlapping your strokes slightly helps prevent missed patches.Clear Debris Regularly: Stop the trimmer and clear debris from the cutting head to prevent it from getting clogged. This will maintain optimal cutting performance.Frequently Asked QuestionsHow often should I check the fuel and oil levels in my petrol trimmer?Checking the fuel and oil levels should be part of your pre-trimming routine. Before every use, ensure there is sufficient fuel and oil, following the manufacturers guidelines on the fuel-oil mixture ratio.Is a petrol trimmer more powerful than an electric one?Yes, petrol trimmers are generally more powerful than electric ones, making them suitable for larger or more challenging areas with thicker vegetation. However, they are also heavier and noisier.Can I use a petrol trimmer on a sloped terrain?Yes, you can use a petrol trimmer on a sloped terrain, but exercise caution. Always work across the slope, not up or down, to prevent accidents and ensure stability.How long does the cutting line last before I need to replace it?The lifespan of the cutting line depends on usage and the type of vegetation you are trimming. On average, you may need to replace the line every 5 to 10 hours of strimming.Can I use a petrol trimmer to trim around trees and delicate plants?Yes, you can trim around trees and delicate plants using a cordless trimmer, but be gentle and use a low throttle setting. Consider using a handheld edging tool for more precise work.What maintenance does a petrol trimmer require?Regular maintenance includes cleaning the air filter, inspecting spark plugs, lubricating the gearbox, and sharpening or replacing cutting blades or lines.ConclusionNow that youve mastered how to start a petrol trimmer and learned some valuable tips for effective strimming, youre ready to tackle your garden with confidence.Remember to prioritize safety, follow proper starting procedures, and use the trimmer with care.With the right technique and maintenance, your petrol trimmer will be a reliable tool for keeping your garden pristine throughout the seasons. Want a well-manicured garden? Dont we all! This look would be impossible without your petrol trimmer keeping the weeds out of your way and the lawn edging crisp.But to use it, youve got to know how to start it. This article takes you through cold-starting your petrol trimmer and firing it up when its warm, too!How to Start a Petrol Trimmer Cold Start8 straightforward steps. Thats all it takes to get your petrol trimmer going. Follow these, and you cant go wrong!1. Mix FuelFunnily enough, a petrol trimmer wont work without fuel. But its not just petrol that the trimmer requires. Youll need to mix unleaded petrol with semi-synthetic 2-stroke oil at a ratio of 40:1.Your petrol trimmer should have come with a lidded measuring jug. Youll likely find guidelines on the side, so use these for reference! Put the lid back on the jug and give it a good shake.2. Fuel Up!Fuel up your trimmer with your pre-mixed fuel. Take off your trimmers fuel cap and pour your mix in. The tank should end up being full. No more, no less.3. Its Time to PrimePress down on the priming bulb between 5 and 8 times. Youll require fewer starter cord pulls to start the trimmer after this. Fuel should be travelling into the priming bulb at this point.If its not, theres a problem. Check the troubleshooting tips further into the article for guidance.4. Turn it OnNow, its time to turn it on. Reposition the switch so its on the On setting. This may appear as an I on some trimmers.5. Give it Some ThrottleThe next thing to reposition is the choke. Change this to the Start position and squeeze the throttle lever. Only do this once!6. Get Your Trimmer in a Sturdy PositionBefore you even think about moving onto the pull-start, youll want to place your trimmer on the ground in a sturdy position. Ensure the pull-start is facing you and the cutting area isnt making contact with anything.7. Pull Start!Then, place your left hand on the trimmer neck and use your right to grab hold of the pull start. Gently bring the pull start towards you until you feel resistance, then tug hard 3 5 times until the engine starts to roar.The best way to start up your trimmer is using a vertical pulling motion. Keep the rope taut, not letting any slack touch the trimmer casing.8. Increase the AirflowIncrease the airflow into your trimmer by moving the choke to Run or Open. Press down on the throttle a little, then leave it to run for around 40 seconds. Now, its time to get trimming!What To Do if the Trimmer Doesnt StartOk, so youve followed the instructions precisely, but your trimmer is sitting there silent. There are 5 things you can do to check the condition of your petrol trimmer. Measuring your fuel mix wrong is an easy mistake to make. In fact, its the most common blunder. Did you definitely add 40 parts unleaded to 1 part 2-stroke oil?If theres no mistake there, consider the age of your petrol. It should be less than 6 weeks old. Your petrol trimmer wont like stale fuel. Theres a delicate balance between fuel and air. This balance needs to be maintained for the trimmer to work.You can tell if the balance is wrong because the start is slow. It doesnt have its usual roar! Find your trimmers adjustment screw, then turn it as far clockwise as possible. Rewind it 1.5 2 turns, and try the starting process again. If it still has no life, check that the engine isnt flooded. This happens if you pull the start mechanism too many times.Dont worry, theres an easy solution. Just check the spark plug isnt damp. Take the spark plug out and let some of the fuel evaporate if you suspect its flooded. Put the plug back, then try the start process again. Expose the spark plug by taking off the top cover. Take out your spanner and remove the spark plug wire and the spark plug itself.Then, holding the spark plugs boot end, tap its electrode tip onto a metal surface. Switch your trimmer on if its not already, and yank the pull start with your spare hand. The spark plug will produce blue sparks if its in good working order. The tank filter can sometimes stop fuel from travelling into the engine. Check theres fuel in the priming bulb. If not, open your trimmers fuel tank and reposition the fuel filter, so its not as close to the neck of the tank.Then, try to start your trimmer again.If youre still struggling to fire up your trimmer, its time to call in an expert.How to Start a Petrol Trimmer Warm StartYouve already got past the cold start stage, and youve had your trimmer up and running. Youve switched it off momentarily, but now youre ready to continue.Firing up your petrol trimmer from warm is easy peasy. Even a child could do it although I wouldnt recommend it! Just position the Start/Stop switch to Start, place the choke on Run, then yank the starter cord. Once the motor is running, youre good to go!Lets Get Strimming!Youve almost achieved that pristine garden youve always wanted. If youre starting your petrol trimmer from cold, follow the 8 easy steps above, and use the troubleshooting guide if its not playing ball.If youve already got your trimmer going, what are you waiting for? Perform a warm start, and keep up the good work! Modified on: Fri, 30 Apr, 2021 at 3:31 PM This article covers the starting procedure for a petrol trimmer.TABLE OF CONTENTSFirst of all, make sure that you have used the correct fuel mixture for your machine. You will need to mix fresh unleaded petrol (not older than 4-6 weeks) with 2-stroke engine oil, at a 40:1 ratio. Please use the mixing bottle provided. The engine requires different starting procedures depending on if the machine is in a cold or warm state. 'Cold' means starting up for the first time after you have not been using the machine for a good amount of time. 'Warm' means starting up again after switching off the machine and/or having left it off for a short while.Cold StartLay the machine down flat on the ground. Rest it on the motor and the protective gear. Press the primer bulb approximately 7 times (often enough, at no more bubbles are visible) - this ignites the first amount of petrol that is needed to ignite the engine, 'priming' the carburettor.Set the choke lever fully downwards to the 'full choke' position (indicator: horizontal line) - this closes the airflow, allowing a concentrated amount of fuel to go through. Use your left hand to hold the appliance firmly by the rear handle. Pull on the starter cord so that you feel resistance, then pull vigorously 3 to 4 times. When the engine ticks over it means that the engine has ignited.Whilst it is ticking, set the choke lever to the half choke position (indicator: diagonal line) - this allows some air to enter the carburettor.Pull the starter grip again quickly and strongly until the motor runs fully.Please wait 30 seconds to warm up the machine before operating the product (ie. before pressing the throttle). Pressing the throttle will automatically shift the choke to 'Run' position.Warm StartSet the Start/Stop switch to START position.Set the choke to the RN position (vertical line) - this allows the highest degree of air-flow.Pull the starter cord until the motor runs fully. Did you find it helpful? Yes NoSend feedbackSorry we couldn't be helpful. Help us improve this article with your feedback. Want a well-manicured garden? Dont we all! This look would be impossible without your petrol trimmer keeping the weeds out of your way and the lawn edging crisp.But to use it, youve got to know how to start it. This article takes you through cold-starting your petrol trimmer and firing it up when its warm, too!How to Start a Petrol Trimmer Cold Start8 straightforward steps. Thats all it takes to get your petrol trimmer going. Follow these, and you cant go wrong!1. Mix FuelFunnily enough, a petrol trimmer wont work without fuel. But its not just petrol that the trimmer requires. Youll need to mix unleaded petrol with semi-synthetic 2-stroke oil at a ratio of 40:1.Your petrol trimmer should have come with a lidded measuring jug. Youll likely find guidelines on the side, so use these for reference! Put the lid back on the jug and give it a good shake.2. Fuel Up!Fuel up your trimmer with your pre-mixed fuel. Take off your trimmers fuel cap and pour your mix in. The tank should end up being full. No more, no less.3. Its Time to PrimePress down on the priming bulb between 5 and 8 times. Youll require fewer starter cord pulls to start the trimmer after this. Fuel should be travelling into the priming bulb at this point.If its not, theres a problem. Check the troubleshooting tips further into the article for guidance.4. Turn it OnNow, its time to turn it on. Reposition the switch so its on the On setting. This may appear as an I on some trimmers.5. Give it Some ThrottleThe next thing to reposition is the choke. Change this to the Start position and squeeze the throttle lever. Only do this once!6. Get Your Trimmer in a Sturdy PositionBefore you even think about moving onto the pull-start, youll want to place your trimmer on the ground in a sturdy position. Ensure the pull-start is facing you and the cutting area isnt making contact with anything.7. Pull Start!Then, place your left hand on the trimmer neck and use your right to grab hold of the pull start. Gently bring the pull start towards you until you feel resistance, then tug hard 3 5 times until the engine starts to roar.The best way to start up your trimmer is using a vertical pulling motion. Keep the rope taut, not letting any slack touch the trimmer casing.8. Increase the AirflowIncrease the airflow into your trimmer by moving the choke to Run or Open. Press down on the throttle a little, then leave it to run for around 40 seconds. Now, its time to get trimming!What To Do if the Trimmer Doesnt StartOk, so youve followed the instructions precisely, but your trimmer is sitting there silent. There are 5 things you can do to check the condition of your petrol trimmer. Measuring your fuel mix wrong is an easy mistake to make. In fact, its the most common blunder. Did you definitely add 40 parts unleaded to 1 part 2-stroke oil?If theres no mistake there, consider the age of your petrol. It should be less than 6 weeks old. Your petrol trimmer wont like stale fuel. Theres a delicate balance between fuel and air. This balance needs to be maintained for the trimmer to work.You can tell if the balance is wrong because the start is slow. It doesnt have its usual roar! Find your trimmers adjustment screw, then turn it as far clockwise as possible. Rewind it 1.5 2 turns, and try the starting process again. If it still has no life, check that the engine isnt flooded. This happens if you pull the start mechanism too many times.Dont worry, theres an easy solution. Just check the spark plug isnt damp. Take the spark plug out and let some of the fuel evaporate if you suspect its flooded. Put the plug back, then try the start process again. Expose the spark plug by taking off the top cover. Take out your spanner and remove the spark plug wire and the spark plug itself.Then, holding the spark plugs boot end, tap its electrode tip onto a metal surface. Switch your trimmer on if its not already, and yank the pull start with your spare hand. The spark plug will produce blue sparks if its in good working order. The tank filter can sometimes stop fuel from travelling into the engine. Check theres fuel in the priming bulb. If not, open your trimmers fuel tank and reposition the fuel filter, so its not as close to the neck of the tank.Then, try to start your trimmer again.If youre still struggling to fire up your trimmer, its time to call in an expert.How to Start a Petrol Trimmer Warm StartYouve already got past the cold start stage, and youve had your trimmer up and running. Youve switched it off momentarily, but now youre ready to continue.Firing up your petrol trimmer from warm is easy peasy. Even a child could do it although I wouldnt recommend it! Just position the Start/Stop switch to Start, place the choke on Run, then yank the starter cord. Once the motor is running, youre good to go!Lets Get Strimming!Youve almost achieved that pristine garden youve always wanted. If youre starting your petrol trimmer from cold, follow the 8 easy steps above, and use the troubleshooting guide if its not playing ball.If youve already got your trimmer going, what are you waiting for? Perform a warm start, and keep up the good work!

How to start a petrol trimmer. How do you start a petrol hedge trimmer. How to start parker brand trimmer. Parker trimmer not starting.