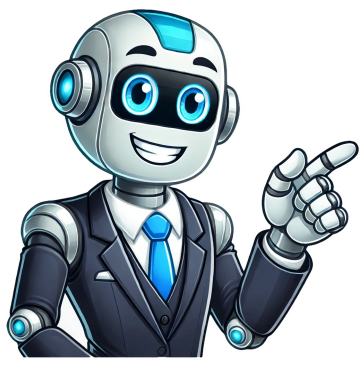


I'm not a bot





Sometimes, in the IELTS Writing Task 1 Map questions, we get two or three maps that show changes over time. These maps usually depict towns, villages, parks, or similar structures. You'll never receive a single map to analyze; instead, there will always be either two or three maps from different time periods. Your task is to identify and report the changes between these maps to help you achieve your dream of studying abroad courses. Here's an example IELTS Writing Task 1 question: The maps below show the center of a small town called Birshire as it currently is, and plans for its development in the future. Summarize the information by selecting and reporting the main features, and make comparisons where relevant. Write at least 150 words. The changes that can occur between maps include addition, removal, expansion, downsizing, replacement, and shifting. For instance, a new structure not present in the old map may be seen in the next map, indicating construction of a new feature. Conversely, old structures may be demolished and erased from the map. Some items may also be extended or reduced in size when comparing two maps. Additionally, features from the older map may be absent from the newer one with some other feature in its place. The main features of Birshire's transformation include the removal of farms and the addition of new infrastructures such as roads, a car park, and a supermarket. The biggest change is that all the farms in Birshire will be removed to make way for urban development. The plans provided showcase the evolution of Central Park over two decades, from 1990 to 2020. A summary of the main features highlights the changes that have taken place. Although the overall layout remains intact, several additions and modifications can be observed. The Krishna temple and Buddha statue have retained their positions, while the Koi pond has seen no change. However, certain areas have undergone significant alterations. The flower garden in the northern side has been downsized, with a stage for programs constructed adjacent to it. The toilet's relocation from the northeastern corner to the southwestern corner is also noteworthy. In contrast, the children's play area has been reduced in size, and several structures have been removed or replaced, including the telephone booth and shop. You'll be given two maps showing changes over time. Don't worry too much about the map type; it's essentially the same - a visual representation of a location. Your task is to describe that spot and highlight the transformations that took place. For effective description, you need to consider your reader can't see the image you're seeing. This requires precision and conciseness in your word choice. Start with cardinal directions (north, south, east, west) as they'll help a lot. Avoid using phrases like "on the right" because they are relative - what's right for one person could be left for another. Prepositions are also crucial; getting them wrong can lead to an inaccurate map description, which would be quite problematic. Look at these two maps of Felixstone and notice the changes. First, we need to identify where certain features were originally located on the 1967 map: Where was the farmland? It was in the eastern part, just north of the road. What about the private beach in 2001? It was in the southeast, meeting the road at its northernmost point and extending all the way to the sea at the south. By 2001, four wind turbines had been added between the dunes and the sea. Note that these are just examples of using accurate language; there could be other great ways to describe these features. Here's my full description of the Felixstone map: Felixstone has two maps - one from 1967 and another from 2001. During this time, several changes occurred, including the removal of a marina and pier. In 1967, Felixstone consisted of a road with a golf course, high street, and farmland to its north. To the south were trees and dunes, along with a hotel and café, and a marina and fish market. By 2001, the farmland had been replaced by a hotel with a swimming pool and tennis courts in the northern part of the road. Half of the shops on the main street had been converted into apartments. To the south, the hotel gained a large car park, and some wind turbines were added between the dunes and the sea. However, the biggest change was the removal of the marina and pier, replaced by a public beach and a private beach, with the fish market beside the pier also removed. One often overlooked aspect is accurate tense use in IELTS task 1. Verb tenses are always crucial in English for conveying meaning but, in task 1, people sometimes focus too much on describing the physical layout rather than using appropriate verb tenses to describe changes over time. Capturing time is essential, and considering the example provided, let's examine the first sentence of the third paragraph: "By 2001, the farmland to the north of the road had been replaced by a hotel with a swimming pool and tennis courts." The phrase "had been replaced" utilizes the passive form of the past perfect tense, which is suitable in this context as it describes map changes without specifying who made the change. The past perfect tense allows us to look further into the past from a point in the past. This map refers to two points in time - 1967 and 2001 - both of which are in the past, requiring us to look back into the past from another point in the past. When describing IELTS maps, two potential problems may arise; too many things to describe or not enough. To address this, it's advisable to begin with the most important features and describe them logically, then move on to other aspects. If there are too many features, prioritize the most significant ones and describe them in detail. If there aren't enough features, devote extra effort to providing details about key aspects, such as describing a bridge in the north that spans the Severn River and connects two towns. The most crucial aspect is selecting the most important data and sequencing it logically. The structure for IELTS writing task 1 essays on maps is similar to those for charts and tables, comprising an introduction, body paragraphs describing each map, and highlighting changes. While there are various approaches, it's usually best to dedicate a paragraph to each map. Additionally, instead of a "general trend" sentence, highlight significant changes or capture the essence of the differences. You can discover more information about map descriptions by checking out these links [here](#) and [here](#). Additionally, if you're looking for resources on IELTS listening map skills, you'll find them [here](#) too.

How to write map in ielts task 1. How to read map in ielts. Ielts map writing example. How to write map essay in ielts. How to write map in writing task 1. How to describe map in ielts.