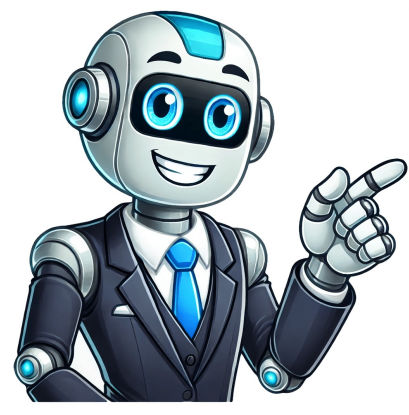


Continue



Amazons new product under the smart speaker category is the Echo Pop, with a sleek and modern design that complements home decor. The small and compact device makes it easy to place anywhere in the house and resembles the Echo Spot but lacks a display and other features. Priced at \$5,000, the Echo Pop is comparable to the Echo Dot 5th Gen, which costs Rs 5,500. After using it for two weeks, we bring you the review of Amazon Echo Pop. The Echo Pop has strengths regarding functionality, which we will discuss in this review. It is available in four attractive colors, Black, Green, Purple, and White. Before beginning with the Amazon Echo Pop review, let's first look at the box and see what else comes with the Echo Pop. Amazon Echo PopPower adapterQuick start guideThe Amazon Echo Pop seamlessly integrates into your home design without sticking out too much. It can be placed anywhere in your house and still will look as if it belongs to that place. With four different colors available, it complements the minimalist style of your home decor. Additionally, its small and compact size makes it a great companion for your work or study desk, as it won't take up too much space. Talking about overall looks, get a light bar at the top to notify different activities. There are three buttons on the top; volume up, volume down, and mute button. Three microphone holes are also spread across the top so Alexa can hear you from a distance. A power port is placed at the rear of the Echo Pop.The front is all fabric, which not only hides the main speaker driver inside but makes the speaker looks beautiful at the same time. The bottom of the Echo Pop has rubber feet to keep it steady on any surface. The build quality is impressive, considering it is made from polycarbonate. While designing the Echo Pop, Amazon kept the environment in mind, as only recycled materials have been used, even the front fabric. The Echo Pop is a great choice if the design intrigues you and you love things that align with your home decor.Amazon Echo devices are built and used mostly for listening to music most of the time. And for that, Echo Pop is equipped with a large 1.95 inches front-firing speaker, which is slightly bigger than the one on Echo Dot 5th Gen. But that doesn't make any difference in the sound quality. While the speaker is loud enough to fill your living room nicely, it barely has any bass. The equalizer settings in the Alexa app can be used to tune the compound palette slightly. But it only helps you to make the speaker sound louder and nothing else. With a pair of two Echo speakers, you can connect them to create a surround sound experience. Overall the sound quality is crisp and clear for a speaker this size. The microphones are very sensitive and can hear commands from a distance. We usually trigger Alexa and get the music played on the Echo Pop. Not even once, there was not even a single instance where Alexa didn't listen to our commands. I must say that Alexa devices have been understanding the world. There were many instances where Alexa took the context, but despite what we asked, it started playing a song. Other than that, Alexa is quite responsive and quick with commands, thanks to the three-microphone array on the Echo Pop. Amazon has integrated Artificial Intelligence into the Echo Pop to generate more useful answers. It even uses a new Amazon AZZ Neural Engine to process answers at the hardware level. While testing, I found nothing new that Alexa can do using artificial intelligence; maybe Amazon might unlock it in the future. But still, there are a lot of useful and fun things to do with Alexa. With Echo Pop, you can play music, create alarms and reminders, shop on Amazon, and learn many more familiar things. Also, if you whisper anything to Alexa, she whispers back. This is a useful and cool feature; this lets you talk to Alexa without waking up anyone sleeping in the room next to you. Alexas responses are accurate, as it understands the command whispered and replies accordingly. The built-in Follow-up mode and Adaptive mode learns your speech patterns to understand your prompts better. The Follow-up mode enables the Echo to be engaged in conversation-style questioning. While the Adaptive mode understands the pauses and stutters between the questions and listens to your full request. There are a couple of useful features on the Echo Pop to make your life a little easier. These are some of the most noticeable features that come in handy during day-to-day tasks. It is a really neat feature that works just like a two-way intercom. This lets you call from one Echo device in your home to another and is an easy way to talk to anyone sitting in another room without walking into them. With Echo Pop, we were able to drop in from our office to home, and it worked like a charm. Since it does not have a screen, you can only make voice calls with Echo Pop. Echo Pop also lets you snooze the alarms by tapping lightly on the top. We have seen other use cases of this feature, like playing and pausing music, but right now, the Echo Pop can only snooze alarms. Maybe Amazon will release an update to enhance this feature on Echo Pop. You can use Echo Pop as a Bluetooth speaker with your smartphone or Windows PC. This lets you play music on your smartphone through the Echo Pop speaker. But one strange thing I found during testing is that you cannot pick up phone calls when connected to the phone via Bluetooth. This is a big bummer since this feature is available on every other Echo device. With the provided Kids mode in the app, you can set up the Echo Pop in your child's room. It filters out inappropriate content and only provides safe content for children. Kids mode also offers various settings and customizations to make the experience more enjoyable and secure for kids.Alexas core excellence is to control smart home devices using your voice. It understands the prompts and requests quite well and responds instantly. Echoes wake word can also be customized to a few pre-defined ones, so you can call any Echo specifically without triggering all your other Echo devices. You can even change the Alexa Voice or the talking speed for convenience.After spending two weeks with the Amazon Echo Pop, here are the Pros and Cons to summarize my review.ProsNew and Fresh DesignDecent sound qualitySmaller footprintBlends with the home decorConsLacks temperature and motion sensorsSlightly less accurate at understanding promptsLimited tap intractabilityAmazon Echo Pop brings in a unique design, making it stand out from the other Echo devices. It packs the latest hardware and features to assist you with simple daily tasks. But when it comes to the price, I must say that Amazon has cut corners with Echo Pop without cutting the price. If you want a better experience and more features, I recommend the Echo Dot 5th Gen which costs just Rs 500 more than the Echo Pop.You might be interested in the following:You can also follow us for instant tech news at Google News or for tips and tricks, smartphones & gadgets reviews, Join GadgetsToUse Telegram Group or for the latest review videos subscribe GadgetsToUse YouTube Channel.Was this article helpful? We may receive a commission on purchases made from links. One of the biggest selling points of smart plugs, smart coffee makers, or smart blenders is their remote control capability. Gone are the days when you need to push a tactile button on the appliance itself. Just grab your phone, go through some menus, and voil you can turn on the fan, make your favorite cup of espresso, or close the blinds from your phone. Under Network, type the hotspot name, type the hotspot password, and you'll hear Alexa say, "Alex Echo is ready." This means you're now connected to your mobile hotspot. On the app, follow the on-screen instructions to set up the Echo Dot. If you pick a language, address, room location). You can now use Alexa as you normally would. From making voice purchases to playing bills, Alexa can do many things. However, certain features like Amazon shopping notifications can ruin your holiday surprises and pose privacy risks when sharing the place with others. If you do not want Echo devices at your home to notify you of Amazon shipments that are out for delivery or have been delivered, you can be at the right place. Heres how to turn off and stop Amazon order notifications on Alexa Echo devices.How to Disable Amazon Order Notifications on Alexa DevicesBy default, Echo devices at your home and workplace (logged into your account) send notifications for Amazon shipments that are out for delivery or have been delivered. It shows a yellow light ring or on-screen banners on devices with a display. But not everyone may like it for obvious reasons.Imagine it ruining the surprise gift you ordered for your wife or a personal item you ordered by revealing the delivery status when sitting with family in the living room- sounds creepy right? Thankfully, Amazon lets you turn off these notifications on Echo devices. Read on.Turn Off Amazon Shopping Notifications from Alexa AppThe easiest way to turn off Amazon shopping updates and delivery notifications on Echo devices at your home is by using the Alexa app. Download Alexa (Android, iOS) on your phone, log in with the same Amazon account, and then follow the steps below.1.Open the Alexa app on your phone.2.Select More from the bottom toolbar and click on Settings.3.Here, click on Notifications > Amazon Shopping.4.You can now tweak Amazon shopping notifications on Alexa as follows:Say or Show Item Titles:Turn off the toggle for Items in delivery updates to stop Alexa from saying or showing names for ordered items when giving delivery updates. By default, this is turned off for items marked as gifts.Delivery Notifications:Disable the toggles to stop Alexa notifications for orders that are out for delivery or are delivered.Order Updates: Completely turn off updates to access these features. If you do not have a Wi-Fi connection in your home, you can still use the Amazon Alexa via Bluetooth or a mobile hotspot. If you are using the Alexa device without an active connection, you will not be able to connect to various applications and features. This is because of the way the devices work when you send commands to them. The commands you asked your Amazon Alexa device are not stored on the devices themselves, they will record your voice clips and keep them as temporary files which then use a tool to translate and convert the voice into text which the server then uses as a command to compare and send data back. Think of it as a messenger in war, a soldier tells the messenger what to say in French and the messenger tells the recipient what it was in English, who will then send a reply back. Can I connect the Alexa Echo to a hotspot? Yes, you simply need to enable the hotspot on your mobile device prior and then reconnect the Alexa via the Amazon Alexa App. Open the Alexa App.SelectDevices.SelectEcho & Alexa.Select your device.SelectChangenext toWi-Fi Networkand follow the instructions in the app. Make sure to select the right network. This depends on a varying number of parameters, you will initially need a Wi-Fi connection for your Alexa device to connect via Bluetooth. If your location lacks Wi-Fi, consider going to a public hotspot to pair your devices, however, do not use this to send sensitive information as this information can be hacked and monitored. Once you have an internet connection and can access the Amazon servers, you can follow these steps to connect your Alexa device to your mobile phone: Open the Alexa application on your smartphone, select menu, and choose Settings. Select the device you would like to pair. Select Bluetooth. Select a device from the list.SelectForgetRepeat this step for all other Bluetooth devices on the list. If you're looking for a decent Bluetooth speaker at a decent price, we recommend the Anker SoundCore mini. Boasting over 25,000 positive reviews, Wi-Fi Alexa Alarms work without Wi-Fi? Yes, while a massive advantage when your internet isn't working. Yes, Alexa can still work without a Wi-Fi connection, which seems neat. But, the truth is that you still will not be able to turn off the alarm as it cannot relay to the Amazon server. This is because the Alarm system itself is set in the Alexa device itself; hopefully, we will see more features like this in the future! Just to help with this, if the night before your partner is asleep and you want to wake your partner, you can walk up to your Alexa unit and whisper to it, Alexa, set the volume to one. This will result in a small flash but no voice response. Now ask Alexa to set the Alarm at the time you need by whispering to it and you'll get a VERY quiet whispering response. How Does WIFI Work? Wi-Fi is a group of IEEE 702.11 wireless devices that are used to communicate from a local environment to the global one, essentially sending data to and from your location to other locations. Wi-Fi Stands for Wireless fidelity and is another way of saying WLAN (Wireless local area network). Wi-Fi uses radio frequencies to send signals back and forth to other wireless devices, Wi-Fi uses Gigahertz frequencies rather than the traditional non-wifi radio which uses Kilohertz and Megahertz. One Hertz (Hz), is one cycle per second, so calculating that, one GHz is the same as one billion cycles. How much bandwidth does Alexa use? This is a rather broad query as it depends on how many skills you have installed, how often it updates, how often you have automated schedules run, and stream music, etc. One user on Reddit (redthundr69), explained that when their device was idle it was using around 1Mbps, however, this doesn't take into consideration day-to-day use. Top is upload, bottom is download. Purple is download, pink is upload. jryanishere (Reddit) Alexa app is offline This is something that plagued a lot of us in 2017 through 2018, I haven't seen much of it since, but if this does happen. Unplug the Alexa Echo device and uninstall the app on your mobile.Restart your phone to clear its app cache and then reinstall the app, or re-connect your Alexa, it should now download. Alternatively, check out this old TechTimes article as it goes into more detail on potential other solutions. In Summary So, the Amazon Alexa devices are great value for the money you spend, they're one of the best smart speakers you can get. They're easy to use, they're fun, and they're a great way to control your smart home. If you want to share anything or chat smart homes, definitely send me an email! At SmartHomePerfect we pride ourselves on providing trustworthy, unbiased information. If you buy through links on our site, we may earn a small affiliate commission at no extra cost to you. Learn more Does Alexa work best with reliable WiFi? Absolutely, much of Alexa's functionality rides on cloud services and apps. It's really key to have stable internet from a trusted WiFi source. Picture a race car needing top-notch fuel!Alexa zips along best when connected strongly. Keep that WiFi in tip-top shape, and Alexa can assist you anytime you call on it. There are a small subset of features on an Echo speaker or display that can still function without an active Wi-Fi or internet connection. The specific features available depend on the exact model you have. Below I walk through what features work without Wi-Fi and how you can use your Echo device without having a fixed internet connection. Note: The latest Echo Show displays can be connected to the internet via a micro-USB > Ethernet adapter. In this case, you dont need Wi-Fi, yet you can still avail of all Alexa features. Alexas functions can be broadly broken down into local / on-device functions and cloud functions. For example, Alexas audio pattern-recognition software installed on the Echo speaker to recognize the wake word. Once it hears the wake word, it then records the audio request and sends it to the cloud for processing. The cloud service then interprets the request using natural language processing, carries out an appropriate action (such as checking if there is traffic in the area) and sends the response back to the device, to be relayed to the user. In the above example, without an active Wi-Fi or internet connection, Alexa wont be able to send the request to the cloud. This is why the vast majority of Alexa features wont be available without Wi-Fi. Certain models of Echo speakers and displays can support a limited number of voice commands to carry out various functions. This is similar to the audio pattern-recognition software installed on the Echo speaker. However, if you have a Wi-Fi connection, you can use the Echo device to control your smart home. If you want to share anything or chat smart homes, definitely send me an email! At SmartHomePerfect we pride ourselves on providing trustworthy, unbiased information. If you buy through links on our site, we may earn a small affiliate commission at no extra cost to you. Learn more Does Alexa work best with reliable WiFi? Absolutely, much of Alexa's functionality rides on cloud services and apps. It's really key to have stable internet from a trusted WiFi source. Picture a race car needing top-notch fuel!Alexa zips along best when connected strongly. Keep that WiFi in tip-top shape, and Alexa can assist you anytime you call on it. There are a small subset of features on an Echo speaker or display that can still function without an active Wi-Fi or internet connection. The specific features available depend on the exact model you have. Below I walk through what features work without Wi-Fi and how you can use your Echo device without having a fixed internet connection. Note: The latest Echo Show displays can be connected to the internet via a micro-USB > Ethernet adapter. In this case, you dont need Wi-Fi, yet you can still avail of all Alexa features. Alexas functions can be broadly broken down into local / on-device functions and cloud functions. For example, Alexas audio pattern-recognition software installed on the Echo speaker to recognize the wake word. Once it hears the wake word, it then records the audio request and sends it to the cloud for processing. The cloud service then interprets the request using natural language processing, carries out an appropriate action (such as checking if there is traffic in the area) and sends the response back to the device, to be relayed to the user. In the above example, without an active Wi-Fi or internet connection, Alexa wont be able to send the request to the cloud. This is why the vast majority of Alexa features wont be available without Wi-Fi. Certain models of Echo speakers and displays can support a limited number of voice commands to carry out various functions. This is similar to the audio pattern-recognition software installed on the Echo speaker. However, if you have a Wi-Fi connection, you can use the Echo device to control your smart home. If you want to share anything or chat smart homes, definitely send me an email! At SmartHomePerfect we pride ourselves on providing trustworthy, unbiased information. If you buy through links on our site, we may earn a small affiliate commission at no extra cost to you. Learn more Does Alexa work best with reliable WiFi? Absolutely, much of Alexa's functionality rides on cloud services and apps. It's really key to have stable internet from a trusted WiFi source. Picture a race car needing top-notch fuel!Alexa zips along best when connected strongly. Keep that WiFi in tip-top shape, and Alexa can assist you anytime you call on it. There are a small subset of features on an Echo speaker or display that can still function without an active Wi-Fi or internet connection. The specific features available depend on the exact model you have. Below I walk through what features work without Wi-Fi and how you can use your Echo device without having a fixed internet connection. Note: The latest Echo Show displays can be connected to the internet via a micro-USB > Ethernet adapter. In this case, you dont need Wi-Fi, yet you can still avail of all Alexa features. Alexas functions can be broadly broken down into local / on-device functions and cloud functions. For example, Alexas audio pattern-recognition software installed on the Echo speaker to recognize the wake word. Once it hears the wake word, it then records the audio request and sends it to the cloud for processing. The cloud service then interprets the request using natural language processing, carries out an appropriate action (such as checking if there is traffic in the area) and sends the response back to the device, to be relayed to the user. In the above example, without an active Wi-Fi or internet connection, Alexa wont be able to send the request to the cloud. This is why the vast majority of Alexa features wont be available without Wi-Fi. Certain models of Echo speakers and displays can support a limited number of voice commands to carry out various functions. This is similar to the audio pattern-recognition software installed on the Echo speaker. However, if you have a Wi-Fi connection, you can use the Echo device to control your smart home. If you want to share anything or chat smart homes, definitely send me an email! At SmartHomePerfect we pride ourselves on providing trustworthy, unbiased information. If you buy through links on our site, we may earn a small affiliate commission at no extra cost to you. Learn more Does Alexa work best with reliable WiFi? Absolutely, much of Alexa's functionality rides on cloud services and apps. It's really key to have stable internet from a trusted WiFi source. Picture a race car needing top-notch fuel!Alexa zips along best when connected strongly. Keep that WiFi in tip-top shape, and Alexa can assist you anytime you call on it. There are a small subset of features on an Echo speaker or display that can still function without an active Wi-Fi or internet connection. The specific features available depend on the exact model you have. Below I walk through what features work without Wi-Fi and how you can use your Echo device without having a fixed internet connection. Note: The latest Echo Show displays can be connected to the internet via a micro-USB > Ethernet adapter. In this case, you dont need Wi-Fi, yet you can still avail of all Alexa features. Alexas functions can be broadly broken down into local / on-device functions and cloud functions. For example, Alexas audio pattern-recognition software installed on the Echo speaker to recognize the wake word. Once it hears the wake word, it then records the audio request and sends it to the cloud for processing. The cloud service then interprets the request using natural language processing, carries out an appropriate action (such as checking if there is traffic in the area) and sends the response back to the device, to be relayed to the user. In the above example, without an active Wi-Fi or internet connection, Alexa wont be able to send the request to the cloud. This is why the vast majority of Alexa features wont be available without Wi-Fi. Certain models of Echo speakers and displays can support a limited number of voice commands to carry out various functions. This is similar to the audio pattern-recognition software installed on the Echo speaker. However, if you have a Wi-Fi connection, you can use the Echo device to control your smart home. If you want to share anything or chat smart homes, definitely send me an email! At SmartHomePerfect we pride ourselves on providing trustworthy, unbiased information. If you buy through links on our site, we may earn a small affiliate commission at no extra cost to you. Learn more Does Alexa work best with reliable WiFi? Absolutely, much of Alexa's functionality rides on cloud services and apps. It's really key to have stable internet from a trusted WiFi source. Picture a race car needing top-notch fuel!Alexa zips along best when connected strongly. Keep that WiFi in tip-top shape, and Alexa can assist you anytime you call on it. There are a small subset of features on an Echo speaker or display that can still function without an active Wi-Fi or internet connection. The specific features available depend on the exact model you have. Below I walk through what features work without Wi-Fi and how you can use your Echo device without having a fixed internet connection. Note: The latest Echo Show displays can be connected to the internet via a micro-USB > Ethernet adapter. In this case, you dont need Wi-Fi, yet you can still avail of all Alexa features. Alexas functions can be broadly broken down into local / on-device functions and cloud functions. For example, Alexas audio pattern-recognition software installed on the Echo speaker to recognize the wake word. Once it hears the wake word, it then records the audio request and sends it to the cloud for processing. The cloud service then interprets the request using natural language processing, carries out an appropriate action (such as checking if there is traffic in the area) and sends the response back to the device, to be relayed to the user. In the above example, without an active Wi-Fi or internet connection, Alexa wont be able to send the request to the cloud. This is why the vast majority of Alexa features wont be available without Wi-Fi. Certain models of Echo speakers and displays can support a limited number of voice commands to carry out various functions. This is similar to the audio pattern-recognition software installed on the Echo speaker. However, if you have a Wi-Fi connection, you can use the Echo device to control your smart home. If you want to share anything or chat smart homes, definitely send me an email! At SmartHomePerfect we pride ourselves on providing trustworthy, unbiased information. If you buy through links on our site, we may earn a small affiliate commission at no extra cost to you. Learn more Does Alexa work best with reliable WiFi? Absolutely, much of Alexa's functionality rides on cloud services and apps. It's really key to have stable internet from a trusted WiFi source. Picture a race car needing top-notch fuel!Alexa zips along best when connected strongly. Keep that WiFi in tip-top shape, and Alexa can assist you anytime you call on it. There are a small subset of features on an Echo speaker or display that can still function without an active Wi-Fi or internet connection. The specific features available depend on the exact model you have. Below I walk through what features work without Wi-Fi and how you can use your Echo device without having a fixed internet connection. Note: The latest Echo Show displays can be connected to the internet via a micro-USB > Ethernet adapter. In this case, you dont need Wi-Fi, yet you can still avail of all Alexa features. Alexas functions can be broadly broken down into local / on-device functions and cloud functions. For example, Alexas audio pattern-recognition software installed on the Echo speaker to recognize the wake word. Once it hears the wake word, it then records the audio request and sends it to the cloud for processing. The cloud service then interprets the request using natural language processing, carries out an appropriate action (such as checking if there is traffic in the area) and sends the response back to the device, to be relayed to the user. In the above example, without an active Wi-Fi or internet connection, Alexa wont be able to send the request to the cloud. This is why the vast majority of Alexa features wont be available without Wi-Fi. Certain models of Echo speakers and displays can support a limited number of voice commands to carry out various functions. This is similar to the audio pattern-recognition software installed on the Echo speaker. However, if you have a Wi-Fi connection, you can use the Echo device to control your smart home. If you want to share anything or chat smart homes, definitely send me an email! At SmartHomePerfect we pride ourselves on providing trustworthy, unbiased information. If you buy through links on our site, we may earn a small affiliate commission at no extra cost to you. Learn more Does Alexa work best with reliable WiFi? Absolutely, much of Alexa's functionality rides on cloud services and apps. It's really key to have stable internet from a trusted WiFi source. Picture a race car needing top-notch fuel!Alexa zips along best when connected strongly. Keep that WiFi in tip-top shape, and Alexa can assist you anytime you call on it. There are a small subset of features on an Echo speaker or display that can still function without an active Wi-Fi or internet connection. The specific features available depend on the exact model you have. Below I walk through what features work without Wi-Fi and how you can use your Echo device without having a fixed internet connection. Note: The latest Echo Show displays can be connected to the internet via a micro-USB > Ethernet adapter. In this case, you dont need Wi-Fi, yet you can still avail of all Alexa features. Alexas functions can be broadly broken down into local / on-device functions and cloud functions. For example, Alexas audio pattern-recognition software installed on the Echo speaker to recognize the wake word. Once it hears the wake word, it then records the audio request and sends it to the cloud for processing. The cloud service then interprets the request using natural language processing, carries out an appropriate action (such as checking if there is traffic in the area) and sends the response back to the device, to be relayed to the user. In the above example, without an active Wi-Fi or internet connection, Alexa wont be able to send the request to the cloud. This is why the vast majority of Alexa features wont be available without Wi-Fi. Certain models of Echo speakers and displays can support a limited number of voice commands to carry out various functions. This is similar to the audio pattern-recognition software installed on the Echo speaker. However, if you have a Wi-Fi connection, you can use the Echo device to control your smart home. If you want to share anything or chat smart homes, definitely send me an email! At SmartHomePerfect we pride ourselves on providing trustworthy, unbiased information. If you buy through links on our site, we may earn a small affiliate commission at no extra cost to you. Learn more Does Alexa work best with reliable WiFi? Absolutely, much of Alexa's functionality rides on cloud services and apps. It's really key to have stable internet from a trusted WiFi source. Picture a race car needing top-notch fuel!Alexa zips along best when connected strongly. Keep that WiFi in tip-top shape, and Alexa can assist you anytime you call on it. There are a small subset of features on an Echo speaker or display that can still function without an active Wi-Fi or internet connection. The specific features available depend on the exact model you have. Below I walk through what features work without Wi-Fi and how you can use your Echo device without having a fixed internet connection. Note: The latest Echo Show displays can be connected to the internet via a micro-USB > Ethernet adapter. In this case, you dont need Wi-Fi, yet you can still avail of all Alexa features. Alexas functions can be broadly broken down into local / on-device functions and cloud functions. For example, Alexas audio pattern-recognition software installed on the Echo speaker to recognize the wake word. Once it hears the wake word, it then records the audio request and sends it to the cloud for processing. The cloud service then interprets the request using natural language processing, carries out an appropriate action (such as checking if there is traffic in the area) and sends the response back to the device, to be relayed to the user. In the above example, without an active Wi-Fi or internet connection, Alexa wont be able to send the request to the cloud. This is why the vast majority of Alexa features wont be available without Wi-Fi. Certain models of Echo speakers and displays can support a limited number of voice commands to carry out various functions. This is similar to the audio pattern-recognition software installed on the Echo speaker. However, if you have a Wi-Fi connection, you can use the Echo device to control your smart home. If you want to share anything or chat smart homes, definitely send me an email! At SmartHomePerfect we pride ourselves on providing trustworthy, unbiased information. If you buy through links on our site, we may earn a small affiliate commission at no extra cost to you. Learn more Does Alexa work best with reliable WiFi? Absolutely, much of Alexa's functionality rides on cloud services and apps. It's really key to have stable internet from a trusted WiFi source. Picture a race car needing top-notch fuel!Alexa zips along best when connected strongly. Keep that WiFi in tip-top shape, and Alexa can assist you anytime you call on it. There are a small subset of features on an Echo speaker or display that can still function without an active Wi-Fi or internet connection. The specific features available depend on the exact model you have. Below I walk through what features work without Wi-Fi and how you can use your Echo device without having a fixed internet connection. Note: The latest Echo Show displays can be connected to the internet via a micro-USB > Ethernet adapter. In this case, you dont need Wi-Fi, yet you can still avail of all Alexa features. Alexas functions can be broadly broken down into local / on-device functions and cloud functions. For example, Alexas audio pattern-recognition software installed on the Echo speaker to recognize the wake word. Once it hears the wake word, it then records the audio request and sends it to the cloud for processing. The cloud service then interprets the request using natural language processing, carries out an appropriate action (such as checking if there is traffic in the area) and sends the response back to the device, to be relayed to the user. In the above example, without an active Wi-Fi or internet connection, Alexa wont be able to send the request to the cloud. This is why the vast majority of Alexa features wont be available without Wi-Fi. Certain models of Echo speakers and displays can support a limited number of voice commands to carry out various functions. This is similar to the audio pattern-recognition software installed on the Echo speaker. However, if you have a Wi-Fi connection, you can use the Echo device to control your smart home. If you want to share anything or chat smart homes, definitely send me an email! At SmartHomePerfect we pride ourselves on providing trustworthy, unbiased information. If you buy through links on our site, we may earn a small affiliate commission at no extra cost to you. Learn more Does Alexa work best with reliable WiFi? Absolutely, much of Alexa's functionality rides on cloud services and apps. It's really key to have stable internet from a trusted WiFi source. Picture a race car needing top-notch fuel!Alexa zips along best when connected strongly. Keep that WiFi in tip-top shape, and Alexa can assist you anytime you call on it. There are a small subset of features on an Echo speaker or display that can still function without an active Wi-Fi or internet connection. The specific features available depend on the exact model you have. Below I walk through what features work without Wi-Fi and how you can use your Echo device without having a fixed internet connection. Note: The latest Echo Show displays can be connected to the internet via a micro-USB > Ethernet adapter. In this case, you dont need Wi-Fi, yet you can still avail of all Alexa features. Alexas functions can be broadly broken down into local / on-device functions and cloud functions. For example, Alexas audio pattern-recognition software installed on the Echo speaker to recognize the wake word. Once it hears the wake word, it then records the audio request and sends it to the cloud for processing. The cloud service then interprets the request using natural language processing, carries out an appropriate action (such as checking if there is traffic in the area) and sends the response back to the device, to be relayed to the user. In the above example, without an active Wi-Fi or internet connection, Alexa wont be able to send the request to the cloud. This is why the vast majority of Alexa features wont be available without Wi-Fi. Certain models of Echo speakers and displays can support a limited number of voice commands to carry out various functions. This is similar to the audio pattern-recognition software installed on the Echo speaker. However, if you have a Wi-Fi connection, you can use the Echo device to control your smart home. If you want to share anything or chat smart homes, definitely send me an email! At SmartHomePerfect we pride ourselves on providing trustworthy, unbiased information. If you buy through links on our site, we may earn a small affiliate commission at no extra cost to you. Learn more Does Alexa work best with reliable WiFi? Absolutely, much of Alexa's functionality rides on cloud services and apps. It's really key to have stable internet from a trusted WiFi source. Picture a race car needing top-notch fuel!Alexa zips along best when connected strongly. Keep that WiFi in tip-top shape, and Alexa can assist you anytime you call on it. There are a small subset of features on an Echo speaker or display that can still function without an active Wi-Fi or internet connection. The specific features available depend on the exact model you have. Below I walk through what features work without Wi-Fi and how you can use your Echo device without having a fixed internet connection. Note: The latest Echo Show displays can be connected to the internet via a micro-USB > Ethernet adapter. In this case, you dont need Wi-Fi, yet you can still avail of all Alexa features. Alexas functions can be broadly broken down into local / on-device functions and cloud functions. For example, Alexas audio pattern-recognition software installed on the Echo speaker to recognize the wake word. Once it hears the wake word, it then records the audio request and sends it to the cloud for processing. The cloud service then interprets the request using natural language processing, carries out an appropriate action (such as checking if there is traffic in the area) and sends the response back to the device, to be relayed to the user. In the above example, without an active Wi-Fi or internet connection, Alexa wont be able to send the request to the cloud. This is why the vast majority of Alexa features wont be available without Wi-Fi. Certain models of Echo speakers and displays can support a limited number of voice commands to carry out various functions. This is similar to the audio pattern-recognition software installed on the Echo speaker. However, if you have a Wi-Fi connection, you can use the Echo device to control your smart home. If you want to share anything or chat smart homes, definitely send me an email! At SmartHomePerfect we pride ourselves on providing trustworthy, unbiased information. If you buy through links on our site, we may earn a small affiliate commission at no extra cost to you. Learn more Does Alexa work best with reliable WiFi? Absolutely, much of Alexa's functionality rides on cloud services and apps. It's really key to have stable internet from a trusted WiFi source. Picture a race car needing top-notch fuel!Alexa zips along best when connected strongly. Keep that WiFi in tip-top shape, and Alexa can assist you anytime you call on it. There are a small subset of features on an Echo speaker or display that can still function without an active Wi-Fi or internet connection. The specific features available depend on the exact model you have. Below I walk through what features work without Wi-Fi and how you can use your Echo device without having a fixed internet connection. Note: The latest Echo Show displays can be connected to the internet via a micro-USB > Ethernet adapter. In this case, you dont need Wi-Fi, yet you can still avail of all Alexa features. Alexas functions can be broadly broken down into local / on-device functions and cloud functions. For example, Alexas audio pattern-recognition software installed on the Echo speaker to recognize the wake word. Once it hears the wake word, it then records the audio request and sends it to the cloud for processing. The cloud service then interprets the request using natural language processing, carries out an appropriate action (such as checking if there is traffic in the area) and sends the response back to the device, to be relayed to the user. In the above example, without an active Wi-Fi or internet connection, Alexa wont be able to send the request to the cloud. This is why the vast majority of Alexa features wont be available without Wi-Fi. Certain models of Echo speakers and displays can support a limited number of voice commands to carry out various functions. This is similar to the audio pattern-recognition software installed on the Echo speaker. However, if you have a Wi-Fi connection, you can use the Echo device to control your smart home. If you want to share anything or chat smart homes, definitely send me an email! At SmartHomePerfect we pride ourselves on providing trustworthy, unbiased information. If you buy through links on our site, we may earn a small affiliate commission at no extra cost to you. Learn more Does Alexa work best with reliable WiFi? Absolutely, much of Alexa's functionality rides on cloud services and apps. It's really key to have stable internet from a trusted WiFi source. Picture a race car needing top-notch fuel!Alexa zips along best when connected strongly. Keep that WiFi in tip-top shape, and Alexa can assist you anytime you call on it. There are a small subset of features on an Echo speaker or display that can still function without an active Wi-Fi or internet connection. The specific features available depend on the exact model you have. Below I walk through what features work without Wi-Fi and how you can use your Echo device without having a fixed internet connection. Note: The latest Echo Show displays can be connected to the internet via a micro-USB > Ethernet adapter. In this case, you dont need Wi-Fi, yet you can still avail of all Alexa features. Alexas functions can be broadly broken down into local / on-device functions and cloud functions. For example, Alexas audio pattern-recognition software installed on the Echo speaker to recognize the wake word. Once it hears the wake word, it then records the audio request and sends it to the cloud for processing. The cloud service then interprets the request using natural language processing, carries out an appropriate action (such as checking if there is traffic in the area) and sends the response back to the device, to be relayed to the user. In the above example, without an active Wi-Fi or internet connection, Alexa wont be able to send the request to the cloud. This is why the vast majority of Alexa features wont be available without Wi-Fi. Certain models of Echo speakers and displays can support a limited number of voice commands to carry out various functions. This is similar to the audio pattern-recognition software installed on the Echo speaker. However, if you have a Wi-Fi connection, you can use the Echo device to control your smart home. If you want to share anything or chat smart homes, definitely send me an email! At SmartHomePerfect we pride ourselves on providing trustworthy, unbiased information. If you buy through links on our site, we may earn a small affiliate commission at no extra cost to you. Learn more Does Alexa work best with reliable WiFi? Absolutely, much of Alexa's functionality rides on cloud services and apps. It's really key to have stable internet from a trusted WiFi source. Picture a race car needing top-notch fuel!Alexa zips along best when connected strongly. Keep that WiFi in tip-top shape, and Alexa can assist you anytime you call on it. There are a small subset of features on an Echo speaker or display that can still function without an active Wi-Fi or internet connection. The specific features available depend on the exact model you have. Below I walk through what features work without Wi-Fi and how you can use your Echo device without having a fixed internet connection. Note: The latest Echo Show displays can be connected to the internet via a micro-USB > Ethernet adapter. In this case, you dont need Wi-Fi, yet you can still avail of all Alexa features. Alexas functions can be broadly broken down into local / on-device functions and cloud functions. For example, Alexas audio pattern-recognition software installed on the Echo speaker to recognize the wake word. Once it hears the wake word, it then records the audio request and sends it to the cloud for processing. The cloud service then interprets the request using natural language processing, carries out an appropriate action (such as checking if there is traffic in the area) and sends the response back to the device, to be relayed to the user. In the above example, without an active Wi-Fi or internet connection, Alexa wont be able to send the request to the cloud. This is why the vast majority of Alexa features wont be available without Wi-Fi. Certain models of Echo speakers and displays can support a limited number of voice commands to carry out various functions. This is similar to the audio pattern-recognition software installed on the Echo speaker. However, if you have a Wi-Fi connection, you can use the Echo device to control your smart home. If you want to share anything or chat smart homes, definitely send me an email! At SmartHomePerfect we pride ourselves on providing trustworthy, unbiased information. If you buy through links on our site, we may earn a small affiliate commission at no extra cost to you. Learn more Does Alexa work best with reliable WiFi? Absolutely, much of Alexa's functionality rides on cloud services and apps. It's really key to have stable internet from a trusted WiFi source. Picture a race car needing top-notch fuel!Alexa zips along best when connected strongly. Keep that WiFi in tip-top shape, and Alexa can assist you anytime you call on it. There are a small subset of features on an Echo speaker or display that can still function without an active Wi-Fi or internet connection. The specific features available depend on the exact model you have. Below I walk through what features work without Wi-Fi and how you can use your Echo device without having a fixed internet connection. Note: The latest Echo Show displays can be connected to the internet via a micro-USB > Ethernet adapter. In this case, you dont need Wi-Fi, yet you can still avail of all Alexa features. Alexas functions can be broadly broken down into local / on-device functions and cloud functions. For example, Alexas audio pattern-recognition software installed on the Echo speaker to recognize the wake word. Once it hears the wake word, it then records the audio request and sends it to the cloud for processing. The cloud service then interprets the request using natural language processing, carries out an appropriate action (such as checking if there is traffic in the area) and sends the response back to the device, to be relayed to the user. In the above example, without an active Wi-Fi or internet connection, Alexa wont be able to send the request to the cloud. This is why the vast majority of Alexa features wont be available without Wi-Fi. Certain models of Echo speakers and displays can support a limited number of voice commands to carry out various functions. This is similar to the audio pattern-recognition software installed on the Echo speaker. However, if you have a Wi-Fi connection, you can use the Echo device to control your smart home. If you want to share anything or chat smart homes, definitely send me an email! At SmartHomePerfect we pride ourselves on providing trustworthy, unbiased information. If you buy through links on our site, we may earn a small affiliate commission at no extra cost to you. Learn more Does Alexa work best with reliable WiFi? Absolutely, much of Alexa's functionality rides on cloud services and apps. It's really key to have stable internet from a trusted WiFi source. Picture a race car needing top-notch fuel!Alexa zips along best when connected strongly. Keep that WiFi in tip-top shape, and Alexa can assist you anytime you call on it. There are a small subset of features on an Echo speaker or display that can still function without an active Wi-Fi or internet connection. The specific features available depend on the exact model you have. Below I walk through what features work without Wi-Fi and how you can use your Echo device without having a fixed internet connection. Note: The latest Echo Show displays can be connected to the internet via a micro-USB > Ethernet adapter. In this case, you dont need Wi-Fi, yet you can still avail of all Alexa features. Alexas functions can be broadly broken down into local / on-device functions and cloud functions. For example, Alexas audio pattern-recognition software installed on the Echo speaker to recognize the wake word. Once it hears the wake word, it then records the audio request and sends it to the cloud for processing. The cloud service then interprets the request using natural language processing, carries out an appropriate action (such as checking if there is traffic in the area) and sends the response back to the device, to be relayed to the user. In the above example, without an active Wi-Fi or internet connection, Alexa wont be able to send the request to the cloud. This is why the vast majority of Alexa features wont be available without Wi-Fi. Certain models of Echo speakers and displays can support a limited number of voice commands to carry out various functions. This is similar to the audio pattern-recognition software installed on the Echo speaker. However, if you have a Wi-Fi connection, you can use the Echo device to control your smart home. If you want to share anything or chat smart homes, definitely send me an email! At SmartHomePerfect we pride ourselves on providing trustworthy, unbiased information. If you buy through links on our site, we may earn a small affiliate commission at no extra cost to you. Learn more Does Alexa work best with reliable WiFi? Absolutely, much of Alexa's functionality rides on cloud services and apps. It's really key to have stable internet from a trusted WiFi source. Picture a race car needing top-notch fuel!Alexa zips along best when connected strongly. Keep that WiFi in tip-top shape, and Alexa can assist you anytime you call on it. There are a small subset of features on an Echo speaker or display that can still function without an active Wi-Fi or internet connection. The specific features available depend on the exact model you have. Below I walk through what features work without Wi-Fi and how you can use your Echo device without having a fixed internet connection. Note: The latest Echo Show displays can be connected to the internet via a micro-USB > Ethernet adapter. In this case, you dont need Wi-Fi, yet you can still avail of all Alexa features. Alexas functions can be broadly broken down into local / on-device functions and cloud functions. For example, Alexas audio pattern-recognition software installed on the Echo speaker to recognize the wake word. Once it hears the wake word, it then records the audio request and sends it to the cloud for processing. The cloud service then interprets the request using natural language processing, carries out an appropriate action (such as checking if there is traffic in the area) and sends the response back to the device, to be relayed to the user. In the above example, without an active Wi-Fi or internet connection, Alexa wont be able to send the request to the cloud. This is why the vast majority of Alexa features wont be available without Wi-Fi. Certain models of Echo speakers and displays can support a limited number of voice commands to carry out various functions. This is similar to the audio pattern-recognition software installed on the Echo speaker. However, if you have a Wi-Fi connection, you can use the Echo device to control your smart home. If you want to share anything or chat smart homes, definitely send me an email! At SmartHomePerfect we pride ourselves on providing trustworthy, unbiased information. If you buy through links on our site, we may earn a small affiliate commission at no extra cost to you. Learn more Does Alexa work best with reliable WiFi? Absolutely, much of Alexa's functionality rides on cloud services and apps. It's really key to have stable internet from a trusted WiFi source. Picture a race car needing top-notch fuel!Alexa zips along best when connected strongly. Keep that WiFi in tip-top shape, and Alexa can assist you anytime you call on it. There are a small subset of features on an Echo speaker or display that can still function without an active Wi-Fi or internet connection. The specific features available depend on the exact model you have. Below I walk through what features work without Wi-Fi and how you can use your Echo device without having a fixed internet connection. Note: The latest Echo Show displays can be connected to the internet via a micro-USB > Ethernet adapter. In this case, you dont need Wi-Fi, yet you can still avail of all Alexa features. Alexas functions can be broadly broken down into local / on-device functions and cloud functions. For example, Alexas audio pattern-recognition software installed on the Echo speaker to recognize the wake word. Once it hears the wake word, it then records the audio request and sends it to the cloud for processing. The cloud service then interprets the request using natural language processing, carries out an appropriate action (such as checking if there is traffic in the area) and sends the response back to the device, to be relayed to the user. In the above example, without an active Wi-Fi or internet connection, Alexa wont be able to send the request to the cloud. This is why the vast majority of Alexa features wont be available without Wi-Fi. Certain models of Echo speakers and displays can support a limited number of voice commands to carry out various functions. This is similar to the audio pattern-recognition software installed on the Echo speaker. However, if you have a Wi-Fi connection, you can use the Echo device to control your smart home. If you want to share anything or chat smart homes, definitely send me an email! At SmartHomePerfect we pride ourselves on providing trustworthy, unbiased information. If you buy through links on our site, we may earn a small affiliate commission at no extra cost to you. Learn more Does Alexa work best with reliable WiFi? Absolutely, much of Alexa's functionality rides on cloud services and apps. It's really key to have stable internet from a trusted WiFi source. Picture a race car needing top-notch fuel!Alexa zips along best when connected strongly. Keep that WiFi in tip-top shape, and Alexa can assist you anytime you call on it. There are a small subset of features on an Echo speaker or display that can still function without an active Wi-Fi or internet connection. The specific features available depend on the exact model you have. Below I walk through what features work without Wi-Fi and how you can use your Echo device without having a fixed internet connection. Note: The latest Echo Show displays can be connected to the internet via a micro-USB > Ethernet adapter. In this case, you dont need Wi-Fi, yet you can still avail of all Alexa features. Alexas functions can be broadly broken down into local / on-device functions and cloud functions. For example, Alexas audio pattern-recognition software installed on the Echo speaker to recognize the wake word. Once it hears the wake word, it then records the audio request and sends it to the cloud for processing. The cloud service then interprets the request using natural language processing, carries out an appropriate action (such as checking if there is traffic in the area) and sends the response back to the device, to be relayed to the user. In the above example, without an active Wi-Fi or internet connection, Alexa wont be able to send the request to the cloud. This is why the vast majority of Alexa features wont be available without Wi-Fi. Certain models of Echo speakers and displays can support a limited number of voice commands to carry out various functions. This is similar to the audio pattern-recognition software installed on the Echo speaker. However, if you have a Wi-Fi connection, you can use the Echo device to control your smart home. If you want to share anything or chat smart homes, definitely send me an email! At SmartHomePerfect we pride ourselves on providing trustworthy, unbiased information. If you buy through links on our site, we may earn a small affiliate commission at no extra cost to you. Learn more Does Alexa work best with reliable WiFi? Absolutely, much of Alexa's functionality rides on cloud services and apps. It's really key to have stable internet from a trusted WiFi source. Picture a race car needing top-notch fuel!Alexa zips along best when connected strongly. Keep that WiFi in tip-top shape, and Alexa can assist you anytime you call on it. There are a small subset of features on an Echo speaker or display that can still function without an active Wi-Fi or internet connection. The specific features available depend on the exact model you have. Below I walk through what features work without Wi-Fi and how you can use your Echo device without having a fixed internet connection. Note: The latest Echo Show displays can be connected to the internet via a micro-USB > Ethernet adapter. In this case, you dont need Wi-Fi, yet you can still avail of all Alexa features. Alexas functions can be broadly broken down into local / on-device functions and cloud functions. For example, Alexas audio pattern-recognition software installed on the Echo speaker to recognize the wake word. Once it hears the wake word, it then records the audio request and sends it to the cloud for processing. The cloud service then interprets the request using natural language processing, carries out an appropriate action (such as checking if there is traffic in the area) and sends the response back to the device, to be relayed to the user. In the above example, without an active Wi-Fi or internet connection, Alexa wont be able to send the request to the cloud. This is why the vast majority of Alexa features wont be available without Wi-Fi. Certain models of Echo speakers and displays can support a limited number of voice commands to carry out various functions. This is similar to the audio pattern-recognition software installed on the Echo speaker. However, if you have a Wi-Fi connection, you can use the Echo device to control your smart home. If you want to share anything or chat smart homes, definitely send me an email! At SmartHomePerfect we pride ourselves on providing trustworthy, unbiased information. If you buy through links on our site, we may earn a small affiliate commission at no extra cost to you. Learn more Does Alexa work best with reliable WiFi? Absolutely, much of Alexa's functionality rides on cloud services and apps. It's really key to have stable internet from a trusted WiFi source. Picture a race car needing top-notch fuel!Alexa zips along best when connected strongly. Keep that WiFi in tip-top shape, and Alexa can assist you anytime you call on it. There are a small subset of features on an Echo speaker or display that can still function without an active Wi-Fi or internet connection. The specific features available depend on the exact model you have. Below I walk through what features work without Wi-Fi and how you can use your Echo device without having a fixed internet connection. Note: The latest Echo Show displays can be connected to the internet via a micro-USB > Ethernet adapter. In this case, you dont need Wi-Fi, yet you can still avail of all Alexa features. Alexas functions can be broadly broken down into local / on-device functions and cloud functions. For example, Alexas audio pattern-recognition software installed on the Echo speaker to recognize the wake word. Once it hears the wake word, it then records the audio request and sends it to the cloud for processing. The cloud service then interprets the request using natural language processing, carries out an appropriate action (such as checking if there is traffic in the area) and sends the response back to the device, to be relayed to the user. In the above example, without an active Wi-Fi or internet connection, Alexa wont be able to send the request to the cloud. This is why the vast majority of Alexa features wont be available without Wi-Fi. Certain models of Echo speakers and displays can support a limited number of voice commands to carry out various functions. This is similar to the audio pattern-recognition software installed on the Echo speaker. However, if you

using a mobile hotspot too. Here are two methods to show you how: You can pair Alexa with your smartphones while both the devices are connected to your smartphones hotspot. Follow the steps below to do so: Enable your smartphones hotspot.Plug your Echo into a power source.Open your Alexa app and sign in with your Amazon Pay account.If you havent already, Tap More, then choose Add Device.Select Amazon Echo and the model you have.When your Echo starts blinking orange, it means that it is in setup mode.Permit access to the location.Choose your smartphones hotspot when prompted for Wi-Fi. Turn the Bluetooth in your smartphone on.Say Alexa, connect to Bluetooth or Alexa, pair.You will get a response of Searching from Alexa.Select your Echo when pairing on your smartphone.When Alexa says, Playing from (your phone name), the pairing is complete. This will pair your selected Echo device to your smartphone/tablet. Once paired, you can use your Alexa without Wi-Fi. You can also do this using the Amazon application. Heres how you can use Alexa as a Bluetooth speaker without Wi-Fi using the Amazon Alexa app: Turn your smartphones Bluetooth on.Launch the Alexa app.Go to Devices.Choose Echo & Alexa.Select your Echo device.Then, select Bluetooth Devices.Finally, choose Pair A New Device. Note: Once paired using either of the two methods mentioned above, you wont need Wi-Fi in the future to connect to these devices via Bluetooth. Yes, the Alexa alarm will work perfectly even without Wi-Fi. However, a successful Wi-Fi connection is required to set up the alarms initially. Yes, Amazon Echo can be used without Wi-Fi, but it will only function as a regular Bluetooth speaker without its added features i.e., music streaming, cloud services, etc. No, Echo Dot does not need Wi-Fi to play music from your smartphone. However, the initial Bluetooth pairing between Echo Dot and your smartphone will need internet connectivity. Yes, Alexa can work on mobile data. It just needs a stable internet connection regardless of whether it is from the Wi-Fi or the mobile hotspot. No, the Alexa voice assistant would not work without power. Even though you can use the Amazon Alexa without Wi-Fi, this will limit most of its features, and you will have to reconnect your Echo to the Wi-Fi every time you want to pair up a new device through Bluetooth. To enjoy all the extensive features and functions of your Amazon Alexa, I suggest you use it with Wi-Fi. Using it only as a Bluetooth speaker would kill its purpose! Alexa lets you pay bills and shop on Amazon using your voice, which is handy for people using Echo Dot, Show, and other Alexa-powered speakers. However, you might have noticed that the orders are usually placed as cash on delivery and not prepaid, especially in India. Therefore, in this article, well tell you how to set up automatic reload for Amazon Pay and make prepaid voice purchases via debit/credit card or UPI with Alexa.How Does Alexa Voice Purchase Work?Alexa can not only find the best deals but also make purchases on your behalf with a simple voice command. All you need to do is tell her the items brand, quantity, and color. For example, Alexa, add a pair of black Jockey socks to my cart.In case you do not know or specify the brand, Alexa will pick an Amazon Prime item for you. For example, say, Alexa, add a pair of black socks to my cart, and itll be done. If you have ordered the product earlier, Alexa will remember and adhere to your brand preference.You can also ask Alexa to cancel an order immediately after youve placed one if you order the wrong thing or change your mind.Enable Voice Purchasing for AlexaTo shop online using voice commands, you must first turn on the voice purchasing feature for Alexa, as shown below:1.Open the Alexa app on your phone.2.Tap More on the bottom right and selectSettings.3.Here, select Account Settings > Voice Purchasing.4.Enable the toggle for Voice Purchasing if not already.Add a Passcode to Alexa Voice PurchasesTo ensure that kids at your home do not make unwanted purchases, you can secure Alexas voice purchases with a passcode. Heres how to do it:1. Click on Purchase Confirmation.2. Here, select Voice Codeand set a four-digit code. Alexa will ask for this code whenever you want to confirm a purchase.3.Alternatively, you can choose Voice Profile and enable purchasing for specific people on your account.How to Make Prepaid Alexa Voice Purchases (not COD)?Once you have enabled voice purchasing for Alexa, you can ask it to order items and pay your bills on Amazon. However, many have complained that Alexa voice purchases are placed as cash on delivery. Well, you must maintain the balance in your Amazon Pay wallet to place the order as prepaid and not COD.You can add money to your Amazon Pay balance via UPI or debit card. You can also purchase and redeem Amazon gift cards via your credit card. However, if this seems like a hassle, we recommend enabling automatic wallet reload for your Amazon account, as shown below.Set up Auto-Reload to Maintain Amazon Pay BalanceWith auto-reload, you can maintain a specific balance in your Amazon Pay wallet without having to pay manually. For example, if you frequently purchase household items valued at less than Rs. 2000, you can enable an automatic reload of funds each time your balance drops below this threshold.This ensures that your wallet maintains the balance for prepaid orders and that they wont be placed on COD. Heres how to set up automatic wallet reload in the Amazon app:1.Open the Amazon Shopping app on your phone.2.Click on Menu at the bottom and select Amazon Pay.3.Here, tap on Amazon Pay Balance.4.On the next screen, scroll down and click on Auto Reload.5.It will now ask you to select how much and when to reload.6. Click Auto Reload for and specify the amount you want it to automatically add to your Amazon Pay wallet. Then, tap When the balance drops below and set the minimum threshold amount to trigger the recurring payment.For example, if you choose to Auto Reload for Rs. 2000 when the balance drops below Rs. 500, Amazon will automatically deduct Rs. 2000 from your bank account and add it to your Amazon Pay Wallet every time the balance goes below Rs. 500.7.Hit Continue and proceed with UPI authentication. It will deduct INR 2 for verification, which will later be added to your Amazon Pay balance.Once the auto-reload is set up, Amazon will automatically top up your Pay balance based on the threshold amount. Ensure that the connected bank account has balance; otherwise, the autopay will fail.Disabling Auto-Reload for Amazon PayTo cancel autopay, go to the same section and tap Disable next to Auto-reload wallet. If you have used a third-party app like PhonePe for automatic payments, you can turn off autopay from within that application.Use Subscribe & Save to Automate DeliveriesIf you have Amazon Pay ICICI credit card, use it when paying for Subscribe and Save orders. Amazon will automatically set a standing instruction on your credit card to deduct money for upcoming deliveries.There are a lot of household items we order on a regular basis, such as coffee, toothpaste, dog food, tissue rolls, and cleaning supplies. With Amazons Subscribe & Save feature, you can sign up to get these products delivered regularly, like once a month or once every two months.Its like setting a subscription for a product to be delivered in a certain quantity at your doorstep without having to purchase it manually. All you have to do is search for the product and select the Subscribe and Save category. Then, set the quantity and the schedule (which you can change anytime) and create your subscription.The Subscribe and Save program has no fees. Plus, you usually get additional discounts for ordering items on schedule. From soap to toothpaste, you can subscribe to the daily essentials that you anyways will order every month to save time, money, and the hassle of manually ordering it or even asking Alexa to do so.Automate Your Shopping with Alexa!This is how you can make prepaid voice purchases using Alexa. We also discussed setting up automatic wallet reload for Amazon Pay and using Subscribe & Save to order essentials. I hope the above guide helps you make the most out of Amazon and Alexa. Stay tuned for more such tips, tricks, and how-tos.You might be interested in:You can also follow us for instant tech news atGoogle Newssor for tips and tricks, smartphones & gadgets reviews, joinGadgetsToUse Telegram Groupor for the latest review videos subscribeGadgetsToUse Youtube Channel.Was this article helpful? This article explains what Alexa can (and can't) do without a Wi-Fi internet connection. The short answer is yes. However, the processing power and storage available on Alexa devices are very limited, so most of Alexas functionality relies on an internet connection provided via Wi-Fi. That can be a standard Wi-Fi network like you have at home that uses your home internet connection, mobile data from a dedicated hotspot device, or a phone set up to work as a hotspot. When you ask Alexa a question or ask Alexa to perform a task, your voice is recorded and transmitted over the internet to Amazons cloud servers for processing. What that means in reality is that, without an internet connection, Alexa cant understand your commands, and it wont know how to reply even if it did. Essentially, Alexa loses almost all of its functionality when disconnected from the internet. Alexa doesnt care how its connected to the internet. All that matters is it has an internet connection. The connection has to be via Wi-Fi because Echo devices dont have Ethernet ports, but Alexa works just as well on mobile data as it does on your home internet connection. The easiest way to use Alexa with mobile data is to install the Alexa app on your phone. Whenever youre out of range of a Wi-Fi network and start using your mobile data, the Alexa app will run just fine on your mobile connection. If you want to use an Echo device with mobile data, you need to use a hotspot device or set up your phone as a hotspot and connect the Echo to that using a process known as tethering. Not all cell phone service providers allow tethering, though. Before you try using your Echo device with mobile data, check with your service provider to make sure tethering is allowed.If you use your phone as a mobile hotspot for your Echo, the Echo will consume your mobile data. This may result in charges depending on how your mobile data contract is structured so keep an eye on that. While Alexa relies on an internet connection for most of its functionality, there are a few exceptions. If you find yourself without any internet connection at all, and tethering your phone or using a dedicated hotspot arent options, there are a few things for which youll still be able to depend on your Alexa. Heres what your Alexa can do when it doesnt have a connection to the internet: Alarms: If you've set the alarm on your Echo device, it will still go off at the appointed time even if there is no internet connection. The catch is you cant turn the alarm off or change it in any way without connecting to the internet.Bluetooth speaker: If you have previously paired your phone or another Bluetooth-enabled device with your Echo, you can still use the Echo as a Bluetooth speaker even if it isnt connected to the internet. You do need an internet connection for the initial setup process.Limited local voice control: Some, but not all, Echo devices can process voice commands to control local devices like light switches, provide the time and date, alter alarms and timers, and control the volume of the echo device, all without an internet connection. FAQAmazon devices requireWi-Fi to access features and skills. Echo devices can only connect to Wi-Fi with help from the Alexa app, where you can enter your Wi-Fi information securely.Amazon recommends an Internet connection with speeds of 0.51 Mbps or greater for streaming through Alexa-enabled devices.Thanks for letting us know!Get the Latest Tech News Delivered Every DaySubscribe!Tell us why! Echo speakers are renowned for their Alexa voice assistant. However, they require the internet to function, which may disappoint users who have an Echo device but not an active Wi-Fi connection. Fortunately, all Amazon Echo devices come equipped with Bluetooth, allowing you to leverage them as Bluetooth speakers when the internet is unavailable. Heres how to use your Alexa Echo device as a Bluetooth speaker without WiFi.How to Use Amazon Alexa as a Bluetooth Speaker without WiFi or Internet?So, youve bought a new Amazon Echo device but currently dont have an active WiFi connection? Or has your WiFi plan expired, yet you want to use Alexa to play music over Bluetooth? Do not worry; heres everything you need, from setting up Alexa from scratch to pairing it to your phone through Bluetooth.You dont need these steps if you have already paired the Echo with your phones Bluetooth earlier. In that case, it should automatically connect when you turn on your phones Bluetooth. If it doesnt, try connecting manually from the phones Bluetooth menu.Step 1- Enable WiFi Hotspot On Your PhoneTo begin with, enable the WiFi hotspot on your phone. Your phone must also have an active internet connection; well need this for its initial setup.On Android, you can enable it in Settings > WiFi & Network > WiFi Hotspot.On the other hand, iPhone users can turn on the hotspot from Settings > Personal Hotspot.Step 2- Plug and Set Up the Echo Speaker1. Plug your Alexa Echo device into a power source.2. Install and open the Alexa app on your phone. Sign in with your Amazon account if you have not already.3. Click on More > Add Device.Select Amazon Echo and your model name-Echo, Echo Dot, Dot Plus, etc.4. Once Alexa enters setup mode and starts blinking orange light, follow the instructions to proceed further. If it doesnt go into setup mode automatically, press and hold the Action button (the one with a dot).5. Allow access to location services when prompted.6. When asked to select your WiFi network, choose the phones WiFi hotspot and enter the password to connect.Once the device is set up, say Alexa to ensure its up and working.Step 3- Pair Echo Device to Your Phones Bluetooth1. Open Settings on your iPhone or Android phone.2. Go to Bluetooth and turn it on.3. Say, Alexa, pair or Alexa, connect to Bluetooth.4. On your phone, click on Pair New Device. Let it scan for available devices.5. Check the list of available devices.Tap your Echo device to connect it to your phone.Alexa will say Playing from to notify you that its connected to your phone.Step 4- Turn Off the Hotspot to Use Alexa Without WiFiNow that Alexa is successfully paired with your phones Bluetooth, you can disable your WiFi hotspot. The Echo device will keep paired with your phone to play music over Bluetooth. Once youre done, you can disconnect it from your phones Bluetooth settings.The Echo device will automatically connect to your phone whenever you turn it on, even if its not connected to WiFi. If it doesnt, open Bluetooth settings on your phone and tap your Echo from the list of paired devices.On the contrary, heres how to stop Alexa from auto-connecting to your phone.Can You Use Echo Dot As a Wired Speaker With Your Phone?All Echo devices come with Aux ports to connect external speakers. However, Echo Dot, Echo Spot, Show, and Echo Auto do not have Aux inputs. Only the Echo 3rd gen, Echo Plus, and Echo Studio support Aux input.This means while you can connect it to external speakers, you cannot use your phone to play audio via 3.5mm jack on your Echo Dot or other incompatible Echo devices. I tried doing so with my Echo Dot, and it did not work for obvious reasons.Can Alexa Echo Speakers Work Without Power?Amazon Echo devices are supposed to be plugged into a wall outlet by design. Without power, they wont switch on or work. However, you do have workarounds to use Alexa devices without wired power.Amazon sells a portable version called Echo Input which comes with a built-in 4800mAh battery to listen to music. But if you already have an Echo or Echo Dot, you can use portable third-party battery bases available on Amazon to run Echo on battery.Again, youd need WiFi to make use of Alexa (unless you want to use it only as a Bluetooth speaker). In that case, you can connect it to your phones WiFi hotspot. If power cuts are the reason, you can get a mini UPS for your WiFi router.Here are the battery packs for Echo and routers you can purchase-Wrapping Up!This was a quick guide on how you can use your Echo Alexa device as a Bluetooth speaker for your phone without WiFi or an internet connection. I hope this helps you use your Echo speaker to enjoy music when you do not have active WiFi connectivity. Anyways, let me know your thoughts in the comments below. Stay tuned for more.You might be interested in:You can also follow us for instant tech news at Google News or for tips and tricks, smartphones & gadgets reviews, join GadgetsToUse Telegram Group or for the latest review videos subscribe GadgetsToUse Youtube Channel.Was this article helpful?In todays increasingly connected world, devices like the Amazon Echo Dot have become staples in many households, providing assistance with tasks, controlling smart home devices, and playing music. However, there may be times when you want to use your Echo Dot without a Wi-Fi connectionwhether youre in a remote location, troubleshooting connectivity issues, or simply prefer a more offline experience.This guide on how to use echo dot without wifi will explore various methods to utilise your Echo Dot effectively without relying on Wi-Fi, enabling you to enjoy its features even in disconnected environments.Why Use Echo Dot Without Wi-Fi?Using the Echo Dot without Wi-Fi can have several benefits, including:By using your Echo Dot without Wi-Fi, you can take it with you on trips where there may not be a stable internet connection. This makes it a great companion for outdoor adventures or vacations.If you are on limited data or have an internet plan with data caps, using the Echo Dot without Wi-Fi can help save on your monthly costs. Not relying on Wi-Fi also means you wont face any unexpected charges if you exceed your data limit.Some people may be concerned about their privacy when using smart devices connected to the internet. By using the Echo Dot without Wi-Fi, you can enjoy its features without worrying about potential security breaches or data tracking.7 Methods on How to Use Echo Dot Without WiFiTo prepare your Echo Dot for offline use, start by ensuring it is fully charged or connected to a power source. Next, check that your device is updated with the latest software version; you can do this by temporarily connecting it to Wi-Fi, allowing any necessary updates to install. Once updated, disconnect your Echo Dot from Wi-Fi and ensure that it is in a location where it can be used conveniently.Consider syncing any playlists or preferred settings while still online, as these will enhance your experience when offline. Finally, keep in mind that while many voice commands may still work, features dependent on internet connectivity, such as music streaming or asking for information from the web, will be unavailable until a Wi-Fi connection is restored.One of the simplest ways to use your Echo Dot without Wi-Fi is by connecting it to a device with Bluetooth capabilities, such as your smartphone or laptop. This will allow you to stream music from your device and use voice commands on the Echo Dot.To connect via Bluetooth, open the Alexa app on your device and select Devices in the bottom right corner. Then, click on Echo & Alexa and choose your Echo Dot from the list of devices. Next, select Bluetooth Devices and enable pairing mode on your Echo Dot by saying Alexa, pair. Finally, follow the prompts on your phone or laptop to complete the connection.Another effective method to use your Echo Dot without traditional Wi-Fi is by utilizing your smartphones hotspot feature. This allows you to create a personal internet connection that your Echo Dot can access, enabling you to retain functionality such as smart home control or music streaming. To set up a hotspot, go to your phones settings and locate the Hotspot or Tethering option. Enable it and configure the network name and password if needed.Once your hotspot is active, go to the Alexa app on your phone and navigate to the Devices section. Select your Echo Dot and choose Wi-Fi Network. From the available networks, find your phones hotspot, enter the password, and connect. With this setup, you can enjoy your Echo Dot capabilities without being reliant on a fixed broadband service. Just remember that using your phone as a hotspot may consume data, so keep an eye on your data limits if youre on a restricted plan.If you dont want to rely on your phones hotspot or do not have a smartphone, another option is to use a mobile hotspot device. These devices work similarly to using your phones hotspot but are dedicated solely to providing internet connectivity. They can be purchased from various retailers and cell phone providers; however, they may come with additional costs, such as monthly fees or data usage charges.To set up a mobile hotspot device, follow the instructions provided by the manufacturer. Once it is active and broadcasting a Wi-Fi signal, connect your Echo Dot through the Alexa app as shown in step three. With this setup, you can access your Echo Dots features without using any traditional Wi-Fi networks.If you are in a public place with free or available Wi-Fi, you can connect your Echo Dot to that network and use it as you would at home. This is particularly useful when traveling, as many hotels, airports, and cafes offer complimentary Wi-Fi access. Just remember that these networks may be more vulnerable to security breaches, so be cautious about the information you share while connected.To connect your Echo Dot to a public network, first ensure that the network does not require login credentials. Then, open the Alexa app on your phone and navigate to Devices. Choose your Echo Dot and select Wi-Fi Network. From the available networks, choose the public network and connect. Once connected, you can use your Echo Dot just like you would at home.If your Echo Dot is a model with an Ethernet port, you can use a wired internet connection instead of Wi-Fi. This may be useful in situations where Wi-Fi signals are weak or unavailable. To utilize this method, you will need to have an Ethernet cable and access to a router or modem with available ports.To set up an Ethernet connection on your Echo Dot, start by turning off Wi-Fi on the device. Then, connect one end of the Ethernet cable to your Echo Dot and the other end to an available port on your router or modem. Once connected, you should have internet access on your device, allowing you to use all of its features without Wi-Fi.While many features of the Echo Dot rely on an internet connection, there are certain skills designed to function offline. To utilize these offline skills, you will need to ensure they are enabled while your device is connected to Wi-Fi. Popular examples include basic alarm clocks, timers, and certain music playback options that allow you to play downloaded content.To prepare your Echo Dot for offline use with these skills, navigate to the Alexa app and check which skills you have activated. Make sure to test them while connected beforehand, as you wont be able to access new skills or download updates without internet connectivity. Once you are offline, simply use voice commands like Alexa, set a timer for 10 minutes or Alexa, play my downloaded playlist to access these features. Remember, the range of skills available offline may vary, so explore your Alexa app to get the most out of your Echo Dot in offline mode.Frequently Asked QuestionsA1: No, the initial setup of an Echo Dot requires a Wi-Fi connection. However, once your device is set up, there are alternative methods for using it without traditional Wi-Fi.A2: If you are using a smart home hub, such as Samsung SmartThings or Apple HomeKit, you may still be able to control your devices without Wi-Fi. However, if your smart home relies on a cloud-based connection, you will need an internet connection to control them through your Echo Dot.A3: No, some features of the Echo Dot require internet connectivity and will not work without a Wi-Fi connection. However, there are ways to access certain functions and skills offline, as mentioned in step seven.Following these steps on how to use echo dot without wifi can help you continue using your Echo Dot even without a stable Wi-Fi connection. Whether you choose to use your phones hotspot, invest in a mobile hotspot device, or utilize offline skills, there are options available for staying connected with your Echo Dot wherever you go.As technology continues to advance, we may see even more ways to use our devices without traditional Wi-Fi networks. Keep exploring and experimenting to get the most out of your Echo Dot experience!ConclusionWhile the Echo Dot is designed to be used with a Wi-Fi connection, there are various methods available to use it without traditional internet access. By following these steps on how to use echo dot without wifi, you can continue to enjoy your smart speakers features and capabilities, regardless of whether you have Wi-Fi or not. Just remember to test these methods beforehand and keep an eye on your data usage if using mobile hotspot options.With its versatility and adaptability, the Echo Dot truly proves itself as a convenient and helpful technology tool for any situation. So go ahead and experiment with these different ways to use your Echo Dot without Wi-Fi you never know when they may come in handy! Happy voice commanding!Check it out to Use Security Cameras Without Internet

Can you use alexa without wifi as a speaker. Can you use alexa pop without wifi. Can you use alexa bluetooth without wifi. Can you use your alexa without wifi. Can you use alexa as just a speaker without wifi. Can you use amazon alexa without wifi. Can you use alexa echo without wifi. Can you use alexa echo dot without wifi. Can you use alexa as a bluetooth speaker without wifi. Can you use alexa alarm without wifi.