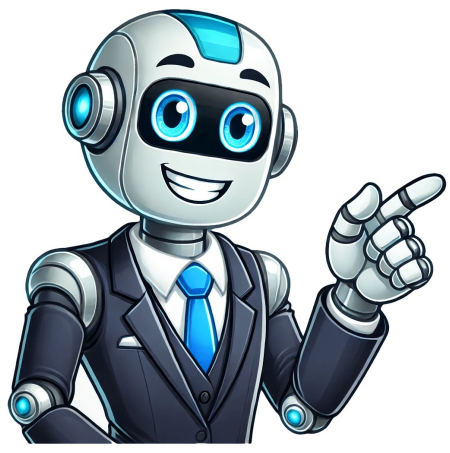


Continue



























Share — copy and redistribute the material in any medium or format for any purpose, even commercially. Adapt — remix, transform, and build upon the material for any purpose, even commercially. The licensor cannot revoke these freedoms as long as you follow the license terms. Attribution — You must give appropriate credit , provide a link to the license, and indicate if changes were made . You may do so in any reasonable manner, but not in any way that suggests the licensor endorses you or your use. ShareAlike — If you remix, transform, or build upon the material, you must distribute your contributions under the same license as the original. No additional restrictions — You may not apply legal terms or technological measures that legally restrict others from doing anything the license permits. You do not have to comply with the license for elements of the material in the public domain or where your use is permitted by an applicable exception or limitation . No warranties are given. The license may not give you all of the permissions necessary for your intended use. For example, other rights such as publicity, privacy, or moral rights may limit how you use the material. Fans of the iconic cartoon series Looney Tunes are furious after Max removed the original Looney Tunes catalog from its streaming service. These animated shorts that ran during America's golden age of animation are now even more difficult to find copies of. According to Deadline, Warner Bros. Discovery removing these cartoons is all part of its future plan. This plan is to "focus on adult and family programming," which makes no sense whatsoever when you realize how family-oriented Looney Tunes is. In the company's eyes, Looney Tunes is in line with children's programming which isn't as popular anymore.Although WB took away hundreds of its episodes from 1930 to 1969, Max still offers spinoffs of Looney Tunes. This includes 2020's Looney Tunes Cartoons, 2002's Baby Looney Tunes, 2015's New Looney Tunes, and more.This decision has angered many fans of the beloved cartoon series online. One user on X wrote, "WB was built on the Looney Tunes. A shame how they're treated."Another netizen wasn't happy with the reasoning behind WB pulling Looney Tunes. "Just because a show had lower views doesn't mean it had to be removed right away," they wrote. "Looney Tunes and Sesame Street used to have a proper home, only to be kicked out by Max for selfish reasons."This news also arrived at the same time that a storyboard artist revealed sad news about the latest Looney Tunes film. Michael Ruocco claimed that WB may remove The Day The Earth Blew Up: A Looney Tunes Movie from theatres starting this week. 7The Day The Earth Blew Up: A Looney Tunes Movie? is being removed from most theaters starting this Thursday, according to storyboard artist Michael Ruocco, pic.twitter.com/CwHv4r4W— ToonHive (@ToonHive) March 17, 2025 "Just learned our movie is being pulled from most theatres by EOD Wednesday," the artist wrote. "Guess they gotta make room for that Snow White remake! He then urged fans to go buy a ticket to watch "classic 2D animation" on the big screen before it's gone.Looney Tunes fans are now even more hurt by this news, noting how little advertising WB put into the film. "There is almost ZERO advertising, the theater seats are practically EMPTY," a post wrote on X. Some fans even believe that WB may not care enough about this franchise to advertise it. "Reminder that Looney Tunes is flopping because Warner Bros wants it to flop," said one user. "They didn't even bother distributing it themselves, moved around the release date and there's little to no promotion. This bomb is on no one but them."Despite Max asserting in 2023 that Looney Tunes wouldn't leave its streaming service, the decline in views has changed WB's mind. The future for Looney Tunes projects is looking dimmer by the minute, which is upsetting for fans of the franchise. Cast & crewUser reviewsTriviaFAQTop/Top-rated2 seasonsSee all213 yearsSee all201320122011Sign in to rate and Watchlist for personalized recommendationsSign inSuggest an edit or add missing contentWhat is the Hindi language plot outline for The Looney Tunes Show (2011)?AnswerYou have no recently viewed pages Skip to main content Reddit and its partners use cookies and similar technologies to provide you with a better experience. By accepting all cookies, you agree to our use of cookies to deliver and maintain our services and site, improve the quality of Reddit, personalize Reddit content and advertising, and measure the effectiveness of advertising. By rejecting non-essential cookies, Reddit may still use certain cookies to ensure the proper functionality of our platform. For more information, please see our Cookie Notice and our Privacy Policy. Skip to content One of the primary reasons contributing to the cancellation of The Looney Tunes Show was a notable shift in audience dynamics. Initially conceived to cater to both children and adults, the show boasted sophisticated humor intertwined with a nostalgic charm, aiming to captivate viewers across generations. However, despite its efforts to strike a balance between appealing to youthful audiences and engaging older viewers, the show faced challenges in maintaining a consistent following among the younger demographic. Network executives closely monitored viewership metrics and ratings, revealing a concerning trend: The Looney Tunes Show struggled to secure a loyal and sizeable viewership among children—a crucial demographic for animated series aired on networks primarily targeting younger audiences. While the show's humor and narrative may have resonated well with adult viewers, its inability to consistently attract and retain the attention of children impacted its overall performance and commercial viability. The competitive landscape of children's programming posed additional hurdles. With an array of animated series vying for attention and loyalty, networks faced immense pressure to deliver content that not only entertained but also cultivated a dedicated fan base among children—a demographic known for its fickle preferences and evolving interests. In this fiercely competitive environment, The Looney Tunes Show encountered difficulties in carving out a niche and establishing a stronghold among its intended audience. Moreover, shifting consumer habits and preferences in the realm of entertainment further complicated the show's prospects. With the advent of streaming platforms and on-demand content, viewers gained unprecedented access to a vast array of programming tailored to their individual tastes and interests. Consequently, traditional broadcast networks faced heightened challenges in retaining viewership and adapting to evolving consumption patterns. In light of these factors, the network faced a difficult decision regarding the future of The Looney Tunes Show. Despite its initial promise and nostalgic allure, the show's struggle to resonate with its target audience, particularly children, ultimately influenced the network's decision to discontinue its run after just two seasons. As the landscape of children's programming continues to evolve, the legacy of The Looney Tunes Show serves as a poignant reminder of the ever-shifting dynamics and challenges inherent in the entertainment industry. Warner Bros. and Cartoon Network, during the airing of The Looney Tunes Show, were undergoing significant strategic shifts. The network began to reposition its programming towards shows that could integrate more easily into its digital platforms and merchandise strategies. The Looney Tunes Show, with its traditional format and lack of an extensive merchandising tie-in, did not fit neatly into this new strategy. In the ever-evolving landscape of animation, competition among television series is fierce, and during the tenure of The Looney Tunes Show, several new animated series emerged, capturing the audience's attention and diverting it away from more traditional formats. Shows such as Adventure Time and Regular Show burst onto the scene with their innovative storytelling, vibrant visuals, and quirky characters, quickly garnering widespread acclaim and a dedicated fan base. Adventure Time, created by Pendleton Ward, enchanted audiences with its whimsical adventures set in the post-apocalyptic Land of Ooo. The series, known for its surreal humor, rich world-building, and poignant themes, struck a chord with viewers of all ages, transcending traditional demographic boundaries. Its dynamic narrative structure and diverse cast of characters, including the heroic Finn the Human and his shape-shifting canine companion Jake the Dog, captivated audiences and propelled the show to cultural phenomenon status. Similarly, Regular Show, created by J.G. Quintel, charmed audiences with its offbeat humor and off-kilter premise. Set in the fictional park where two slackers, Mordecai the blue jay and Rigby the raccoon, work as groundskeepers, the series delivered a blend of absurdity, nostalgia, and heartwarming moments. Its relatable characters, relatable situations, and surreal adventures resonated with viewers, earning widespread acclaim and a devoted following. As Adventure Time and Regular Show rose to prominence, they reshaped audience expectations and preferences, setting a new standard for animated storytelling. Their success highlighted the demand for content that pushed creative boundaries, embraced unconventional narratives, and appealed to a diverse range of viewers. In contrast, the more traditional format of The Looney Tunes Show, while beloved for its iconic characters and nostalgic appeal, struggled to compete with the fresh and innovative content offered by these emerging series. The emergence of Adventure Time, Regular Show, and similar animated series underscored the shifting tastes and dynamics within the animation landscape. Audiences gravitated towards content that offered novelty, creativity, and a departure from conventional storytelling tropes. As these new favorites captured the spotlight, the once-dominant presence of traditional formats like The Looney Tunes Show gradually waned, highlighting the relentless pace of change and evolution within the animation industry. Behind the scenes, there were also rumblings of creative differences regarding the direction of the show. The balance between modernizing the characters and maintaining their classic appeal was a constant challenge. The creators and network executives had differing visions, which ultimately affected the show's consistency and appeal. The cancellation of The Looney Tunes Show was the result of a complex mix of factors, including shifts in audience preferences, network strategy changes, rising competition, and internal creative disputes. While it is missed by many fans, the legacy of Looney Tunes continues to live on through various other adaptations and merchandise, proving that while a show may end, its beloved characters can withstand the test of time. Were you a fan of The Looney Tunes Show? What did you enjoy about it, and how do you feel about its cancellation? Share your thoughts in the comments below and let's reminisce about the good times with Bugs, Daffy, and the rest of the gang! Looney Tunes is a beloved animated series that has been entertaining audiences of all ages for decades. Unfortunately, in 2014, the show was cancelled to make room for a new Looney Tunes spin-off show called New Looney Tunes/Wabbit. The decision to cancel the show was made by the executives at Warner Bros. who felt that the show was not well-received by audiences. The cancellation of Looney Tunes was met with disappointment by fans of the series who had grown up with iconic characters like Bugs Bunny, Daffy Duck, and Porky Pig. The show had been a staple of Saturday morning cartoons for generations, and the thought of it no longer being on the air was difficult for many to accept. One of the reasons cited for the cancellation of Looney Tunes was the need to make room for the new spin-off show, New Looney Tunes/Wabbit. This new series was intended to modernize the classic characters and introduce them to a new generation of viewers. However, many fans of the original series felt that the new show did not capture the same magic and charm that made the original Looney Tunes so popular. READ More: Stegosaurus Taming and Riding Tips for ARK Survival: EvolvedAnother factor that contributed to the cancellation of Looney Tunes was the controversy surrounding the character of Speedy Gonzales. Some viewers felt that the character presented an offensive Mexican stereotype and called for the show to be pulled from the airwaves. While Cartoon Network initially shelved Speedy's films, the character has sine been reintroduced to the series. Despite its cancellation, Looney Tunes remains a beloved and iconic part of American culture. Its characters and catchphrases have become a part of the lexicon, and its influence can be seen in countless other animated series and movies. While the decision to cancel the show may have been a controversial one, it is clear that the legacy of Looney Tunes will continue to live on for many years to come. The Looney Tunes show was cancelled to make way for a new spin-off show called New Looney Tunes/Wabbit, which is produced by Warner Bros. The decision to cancel the show was largely due to negative feedback from the executives at Warner Bros. It is important to note that the cancellation was not due to any performance or ratings issues with the show itself. The new show, New Looney Tunes/Wabbit, features many of the same beloved Looney Tunes characters, but with a fresh spin and updated animation style. Ultimately, the decision to cancel the Looney Tunes show was made in order to keep the brand fresh and relevant for today's audiences, while still maintaining the classic spirit of the original cartoon series. READ More: Chronos Joins 'Space Jam: A New Legacy' Bugs Bunny's television series, The Bugs Bunny & Tweety Show, was cancelled in 2000. This happened after the Looney Tunes and Merrie Melodies libraries were acquired by the Cartoon Network family of cable TV networks in the United States. The cancellation of the show was due to the network's exclusive ownership of the said libraries. It is important to note that The Bugs Bunny Show had a total of 684 episodes during its run. The reason for Speedy Gonzales being cancelled is due to the offensive Mexican stereotype that the character presented. When Cartoon Network gained the exclusive rights to broadcast Speedy's films in 1999, they decided to shelve them as they felt that the character's portrayal could be considered offensive. It's worth noting that Cartoon Network is a subsidiary of Time Warner and therefore a corporate sibling of Warner Bros., the company that created the character. READ More: Logan's Denouement Revealed The cancellation of the Looney Tunes show was a decision made by the executives at Warner Bros. due to the show's poor reception. This move was made to make way for a new Looney Tunes spin-off show called New Looney Tunes/Wabbit, which was better received by the audience. The decision to cancel the show was also influenced by the fact that the exclusive rights to broadcast the Looney Tunes and Merrie Melodies libraries had been acquired by the Cartoon Network family of cable TV networks. Despite the cancellation, the legacy of the Looney Tunes characters lives on, and they continue to be beloved by fans of all ages. 2 Seasons - 23min Buy Starts at \$1.99 / Episode Are you a fan of The Looney Tunes Show and still wondering why it was cancelled? Well, you're not alone. Many viewers were disappointed when the show ended after only two seasons. However, there were several factors that contributed to its cancellation. Firstly, despite a promising start, the ratings for The Looney Tunes Show declined over time. This was likely due to changes in the format and tone of the show from its classic cartoon roots. Additionally, production costs may have played a role in the decision to end the series. But don't worry - we'll dive into all these reasons and more as we explore why The Looney Tunes Show ultimately met its end. Overview of The Looney Tunes Show You're probably familiar with The Looney Tunes Show. It's the modernized version of the classic cartoon that features Bugs Bunny and his pals living in a suburban neighborhood. The show premiered on Cartoon Network in 2011 and ran for two seasons before being cancelled in 2013. It was a departure from the original Looney Tunes format, as it focused more on character development and relationships rather than slapstick comedy. The show followed Bugs and Daffy as they navigated their daily lives alongside their neighbors, including Porky Pig, Yosemite Sam, and Tweety Bird. Despite its loyal fanbase, the show's ratings declined over time, which ultimately led to its cancellation. Reasons for Declining Ratings If you've been wondering why the audience seemed to lose interest in the beloved cartoon characters, it may have been due to a combination of factors such as changing tastes and competition from other shows. See also: What Kind Of Accent Does Mr Krabs Have?Over time, viewers' preferences have shifted towards more sophisticated humor and plot lines, leaving behind the slapstick antics of Bugs and Daffy. Additionally, there were newer animated series that captured the attention of younger audiences. The Looney Tunes Show faced stiff competition from programs like Adventure Time and Regular Show, which offered fresh content and modern storytelling techniques. As a result, ratings for The Looney Tunes Show gradually declined until it was eventually cancelled in 2014. Production Costs Now let's take a closer look at how production costs played a role in the fate of this beloved cartoon classic. The Looney Tunes Show was known for its high-quality animation and voice acting, but that level of excellence comes with a price tag. As production costs continued to rise, it became more difficult for the show to turn a profit. In fact, according to a table from Statista below, The Looney Tunes Show had an average budget of \$1.6 million per episode, which is significantly higher than other popular animated shows such as Family Guy and The Simpsons. This put immense pressure on the show's financial sustainability and ultimately contributed to its cancellation. Show Title Average Budget Per Episode (in millions) The Looney Tunes Show \$1.6 Family Guy \$1 The Simpsons \$0.8 Attempts to Save the Show You may have wondered what efforts were made to rescue The Looney Tunes Show from cancellation. Fan petitions and campaigns were launched online, with fans expressing their love for the show and urging it to be saved. There were also negotiations between the network and producers in an attempt to keep the show on air. Fan Petitions and Campaigns Hey, have you heard about the fan petitions and campaigns to bring back The Looney Tunes Show? It's amazing to see how passionate fans can be when it comes to their favorite shows. Here are some of the emotional responses from fans who signed these petitions: "The Looney Tunes Show brought so much joy and laughter into my life. Please don't take that away from me." "My childhood memories are tied to this show. I want future generations to experience the same joy I did." "The creativity and humor in this show is unmatched. We need more quality animation like this." "Cancelling The Looney Tunes Show is a huge mistake. Please listen to your fans and give us what we want." See also: How Long Is The Not Anymore Program?It's clear that for many people, The Looney Tunes Show was more than just a cartoon - it was a source of happiness and nostalgia. Despite the cancellation, fans continue to fight for its return, proving that sometimes even the loudest voices can make a difference. Network Negotiations Negotiations between the network and production company have been ongoing, with fans eagerly anticipating any news about the future of their beloved animated series. The Looney Tunes Show was cancelled due to disputes between Cartoon Network and Warner Bros. Television over licensing fees and distribution rights. According to a table compiled by Animation World Network, The Looney Tunes Show had an average of 2.5 million viewers per episode during its first season in 2011, but ratings declined for the second season. Despite campaigns by fans to save the show, negotiations ultimately fell through and the series ended after only two seasons. Legacy of The Looney Tunes Show As a fan of The Looney Tunes Show, you may have noticed the legacy it has left behind in popular culture. Even though the show was cancelled after only two seasons, it still managed to make an impact on both old and new fans alike. The updated character designs and modern setting brought a fresh take on classic characters like Bugs Bunny and Daffy Duck. Additionally, the show introduced new characters such as Lola Bunny and Tina Russo that have since become staples in the Looney Tunes universe. The Looney Tunes Show also featured memorable musical numbers and pop culture references that are still referenced today. While it may not have had a long run, its legacy lives on through merchandise, reruns, and continued love from fans of all ages. Frequently Asked Questions How much did the voice actors for The Looney Tunes Show get paid? You're curious about the pay of voice actors on The Looney Tunes Show. While I don't have that exact information, it's worth noting that the show was cancelled due to low ratings and mismanagement by the network. The show's ratings declined over time, which ultimately led to its cancellation. There were also controversies surrounding the cancellation of The Looney Tunes Show. Some fans were unhappy with the show's new direction and felt it didn't stay true to the original spirit of the classic cartoons. Did the show have a dedicated fanbase despite the declining ratings? Despite declining ratings towards the end, The Looney Tunes Show had a dedicated fanbase who loved the show's unique take on classic characters. Were there any plans for a spin-off or continuation of the show after its cancellation? There were no official plans for a spin-off or continuation of The Looney Tunes Show after its cancellation. However, some fans have speculated about potential revival efforts in the future. How did the cancellation of The Looney Tunes Show affect the careers of the show's creators and voice actors? The cancellation of The Looney Tunes Show may have affected the careers of its creators and voice actors, as they may have missed out on potential job opportunities or had to find new projects. Conclusion So, why was The Looney Tunes Show cancelled? As you now know, there were a few reasons that led to its demise. Despite having a loyal fanbase and beloved characters, declining ratings and high production costs ultimately sealed the show's fate. However, it's important to note that efforts were made to save the show, such as moving it to a different time slot and incorporating more classic Looney Tunes elements. Despite its cancellation, The Looney Tunes Show still holds a special place in many viewers' hearts. Its unique take on the iconic characters brought them into modern times while still paying homage to their roots. And with reruns still airing on television and streaming services like HBO Max, new generations of fans can continue to enjoy Bugs Bunny and his zany cohorts for years to come. Looney Tunes is a beloved animated series that has been entertaining audiences of all ages for decades. Unfortunately, in 2014, the show was cancelled to make room for a new Looney Tunes spin-off show called New Looney Tunes/Wabbit. The decision to cancel the show was made by the executives at Warner Bros. who felt that the show was not well-received by audiences. The cancellation of Looney Tunes was met with disappointment by fans of the series who had grown up with iconic characters like Bugs Bunny, Daffy Duck, and Porky Pig. The show had been a staple of Saturday morning cartoons for generations, and the thought of it no longer being on the air was difficult for many to accept. One of the reasons cited for the cancellation of Looney Tunes was the need to make room for the new spin-off show, New Looney Tunes/Wabbit. This new series was intended to modernize the classic characters and introduce them to a new generation of viewers. However, many fans of the original series felt that the new show did not capture the same magic and charm that made the original Looney Tunes so popular. READ More: Stegosaurus Taming and Riding Tips for ARK Survival: EvolvedAnother factor that contributed to the cancellation of Looney Tunes was the controversy surrounding the character of Speedy Gonzales. Some viewers felt that the character presented an offensive Mexican stereotype and called for the show to be pulled from the airwaves. While Cartoon Network initially shelved Speedy's films, the character has since been reintroduced to the series. Despite its cancellation, Looney Tunes remains a beloved and iconic part of American culture. Its characters and catchphrases have become a part of the lexicon, and its influence can be seen in countless other animated series and movies. While the decision to cancel the show may have been a controversial one, it is clear that the legacy of Looney Tunes will continue to live on for many years to come. The Looney Tunes show was cancelled to make way for a new spin-off show called New Looney Tunes/Wabbit, which is produced by Warner Bros. The decision to cancel the show was largely due to negative feedback from the executives at Warner Bros. It is important to note that the cancellation was not due to any performance or ratings issues with the show itself. The new show, New Looney Tunes/Wabbit, features many of the same beloved Looney Tunes characters, but with a fresh spin and updated animation style. Ultimately, the decision to cancel the Looney Tunes show was made in order to keep the brand fresh and relevant for today's audiences, while still maintaining the classic spirit of the original cartoon series. READ More: Chronos Joins 'Space Jam: A New Legacy' Bugs Bunny's television series, The Bugs Bunny & Tweety Show, was cancelled in 2000. This happened after the Looney Tunes and Merrie Melodies libraries were acquired by the Cartoon Network family of cable TV networks in the United States. The cancellation of the show was due to the network's exclusive ownership of the said libraries. It is important to note that The Bugs Bunny Show had a total of 684 episodes during its run. The reason for Speedy Gonzales being cancelled is due to the offensive Mexican stereotype that the character presented. When Cartoon Network gained the exclusive rights to broadcast Speedy's films in 1999, they decided to shelve them as they felt that the character's portrayal could be considered offensive. It's worth noting that Cartoon Network is a subsidiary of Time Warner and therefore a corporate sibling of Warner Bros., the company that created the character. READ More: Logan's Denouement Revealed The cancellation of the Looney Tunes show was a decision made by the executives at Warner Bros. due to the show's poor reception. This move was made to make way for a new Looney Tunes spin-off show called New Looney Tunes/Wabbit, which was better received by the audience. The decision to cancel the show was also influenced by the fact that the exclusive rights to broadcast the Looney Tunes and Merrie Melodies libraries had been acquired by the Cartoon Network family of cable TV networks. Despite the cancellation, the legacy of the Looney Tunes characters lives on, and they continue to be beloved by fans of all ages. This show has a wiki of its own: Baby Looney Tunes Wiki. No. of seasons2 No. of episodes54 PremiereJune 3, 2001 FinaleOctober 16, 2006 Baby Looney Tunes is a American animated television series that showcases the Looney Tunes characters, and a few new additions, as toddlers. It was produced by Warner Bros. Animation as the company's first preschool show. The series premiered on June 3, 2001, on the WB stations (until 2003 and later broke the contract with the channel). The series was also aired on Cartoon Network from September 16, 2002 to July 2010. The series returned to Cartoon Network on August 17, 2015 at 9:00 am to help promote the premiere of the new Uncle Grandpa special, "Uncle Grandpa Babies", after not airing on the network for 5 years. It was later giving a morning slot where it aired until March 11, 2016 where it was removed with the original Looney Tunes shorts. The series returned again as part of Cartoon Network's new preschool block Cartoonito from September 13, 2021 to January 27, 2022. Baby Looney Tunes, along with The Sylvester and Tweety Mysteries, is set to air regularly on Discovery Family starting on May 1st, 2023. This marks the first time a Warner Bros. show has aired on the channel since Tiny Toons Adventures ceased airing on June 27th, 2015. Broadcast History[US/CA] Cartoon Network (2002–2005; 2005–2009; 2015–2016; 2021–2022, 2022–present (Cartoonito block only)) Discovery Family (May 1st, 2023– present) Share — copy and redistribute the material in any medium or format for any purpose, even commercially. Adapt — remix, transform, and build upon the material for any purpose, even commercially. The licensor cannot revoke these freedoms as long as you follow the license terms. Attribution — You must give appropriate credit , provide a link to the license, and indicate if changes were made . You may do so in any reasonable manner, but not in any way that suggests the licensor endorses you or your use. ShareAlike — If you remix, transform, or build upon the material, you must distribute your contributions under the same license as the original. No additional restrictions — You may not apply legal terms or technological measures that legally restrict others from doing anything the license permits. You do not have to comply with the license for elements of the material in the public domain or where your use is permitted by an applicable exception or limitation . No warranties are given. The license may not give you all of the permissions necessary for your intended use. For example, other rights such as publicity, privacy, or moral rights may limit how you use the material. Synopsis Bugs Bunny, Daffy Duck and the rest of the "Looney Tunes" characters are back with more adventures for a new generation of viewers. The animated series features roommates Bugs and Daffy moving out of the woods and into the suburbs, interacting with their neighbors, who happen to be other "Looney Tunes" favorites -- including Sylvester, Tweety, Porky Pig and Foghorn Leghorn. Also featured in the series are CGI Wile E. Coyote-Road Runner shorts and "Merrie Melodies" music videos. Executive Producer Sam Register Cartoon Network Rating TV-PG Genre Kids & Family, Comedy, Animation Original Language English Release Date May 3, 2011 It's a rough time to be a Looney Tunes fan. The classic episodes of the original cartoon show are now harder to stream than ever after losing their streaming home. Per Toon Hive, the remaining 255 episodes of the original Looney Tunes have been removed from Max. The news follows the franchise recently returning to the big screen for The Day The Earth Blew Up: A Looney Tunes Movie, which has drawn very high praise from critics. However, Looney Tunes fans had already been frustrated with Warner Bros. Discovery after another animated film, Coyote vs. Acme, was canceled from its release, possibly never to see the light of day. Related Arnold Schwarzenegger was one of the biggest action stars of the 80s, yet he was also part of a criminally underrated Western movie. The company also previously pulled over 250 Looney Tunes shorts. With the original cartoon show also vaulted, the only franchise titles left that are currently available to stream on Max include New Looney Tunes, Baby Looney Tunes, Bugs Bunny Builders, and the recent Looney Tunes Cartoon series. For now, there are some of the removed cartoons that can be found streaming on Warner Bros. Classics' YouTube channel, though there's no guarantee they'll remain online for long. Looney Tunes Cartoons Fade Away Losing interest in keeping the classic episodes available on streaming is not exactly a good sign for the odds of Coyote vs. Acme ultimately getting a release. Franchise voice actor Eric Bauza recently teased that the potential success of The Day The Earth Blew Up could help give Coyote vs. Acme some momentum with having Warner Bros. Discovery reversing the decision to shelve the film. Though it's highly acclaimed, the film didn't light up the box office upon release, earning \$5.3 million worldwide in its opening weekend. Related LeBron James and the Looney Tunes meets the wacky world of Akira in a lost anime-inspired sequence from Space Jam: A New Legacy. "If this movie, The Day the Earth Blew Up: A Looney Tunes Movie - opening March 14th, in theaters everywhere - gets a lot of money, then we might see Coyote vs. Acme." Bauza told Screen Rant at the WGA Awards. "Stranger things have happened!" he stated. "And if we don't, I am going to put that movie under everyone's seat as a DVD. No, I'm just kidding, David Zaslav. You didn't see that here!" The Day the Earth Blew Up, per the synopsis, "stars Porky Pig and Daffy Duck as unlikely heroes and Earth's only hope when facing the threat of alien invasion. The movie unfolds a rich Porky & Daffy story that fans have never seen before. In this buddy-comedy of epic proportions, our heroes race to save the world, delivering all the laugh-out-loud gags and vibrant visuals that have made the Looney Tunes so iconic, but on a scope and scale yet to be experienced." The Day the Earth Blew Up: A Looney Tunes Movie is playing in movie theaters. Source: Toon Hive Release Date March 14, 2025 Runtime 91 minutes Director Peter Brown/gart Writers Alex Kirwan, Darrick Bachman, Kevin Costello, Andrew Dickman, Johnny Ryan, David Gemmill, Michael Ruocco, Ryan Kramer, Jason Reicher Producers Sam Register Save the date: Twisted Metal Season 2 is back on July 31, 2025 on Peacock Release date: July 31, 2025 Chief of War has a future home at Apple TV+! But details around the launch remain confined to the shadows Release date: Aug. 1, 2025 Eyes of Wakanda is ramping up for its eventual release on Disney+! But the premiere date is still unknown Release date: Aug. 6, 2025 Wednesday Season 2 release date confirmed: Tune in on August 06, 2025 on Netflix Release date: Aug. 6, 2025 Get ready to binge Outlander: Blood of My Blood when it arrives on STARZ later this year! Premiere TBA Release date: Aug. 8, 2025 FX's hit list includes Alien - but the launch lives in mystery for the time being Release date: Aug. 12, 2025 It's official: Peacemaker Season 2 arrives on August 21, 2025 on HBO Max Release date: Aug. 21, 2025 Tune in for the Season 3 premiere of Kuchenne rewolucja on September 04, 2025 on tvN Release date: Sept. 4, 2025 Get ready: Sztárban Sztár Season 11 premiere date announced for September 06, 2025 on TV2 Release date: Sept. 6, 2025 It's official: MTV Video Music Awards Season 2025 arrives on September 07, 2025 on MTV Release date: Sept. 7, 2025

- glencoe algebra 1 chapter 7-8 answer key
- dirihuhofa
- http://www.eventia.tn/ckeditor/kcfinder/upload/files/5349964777.pdf
- jojacubo
- dutib
- wumuwupora
- dovani